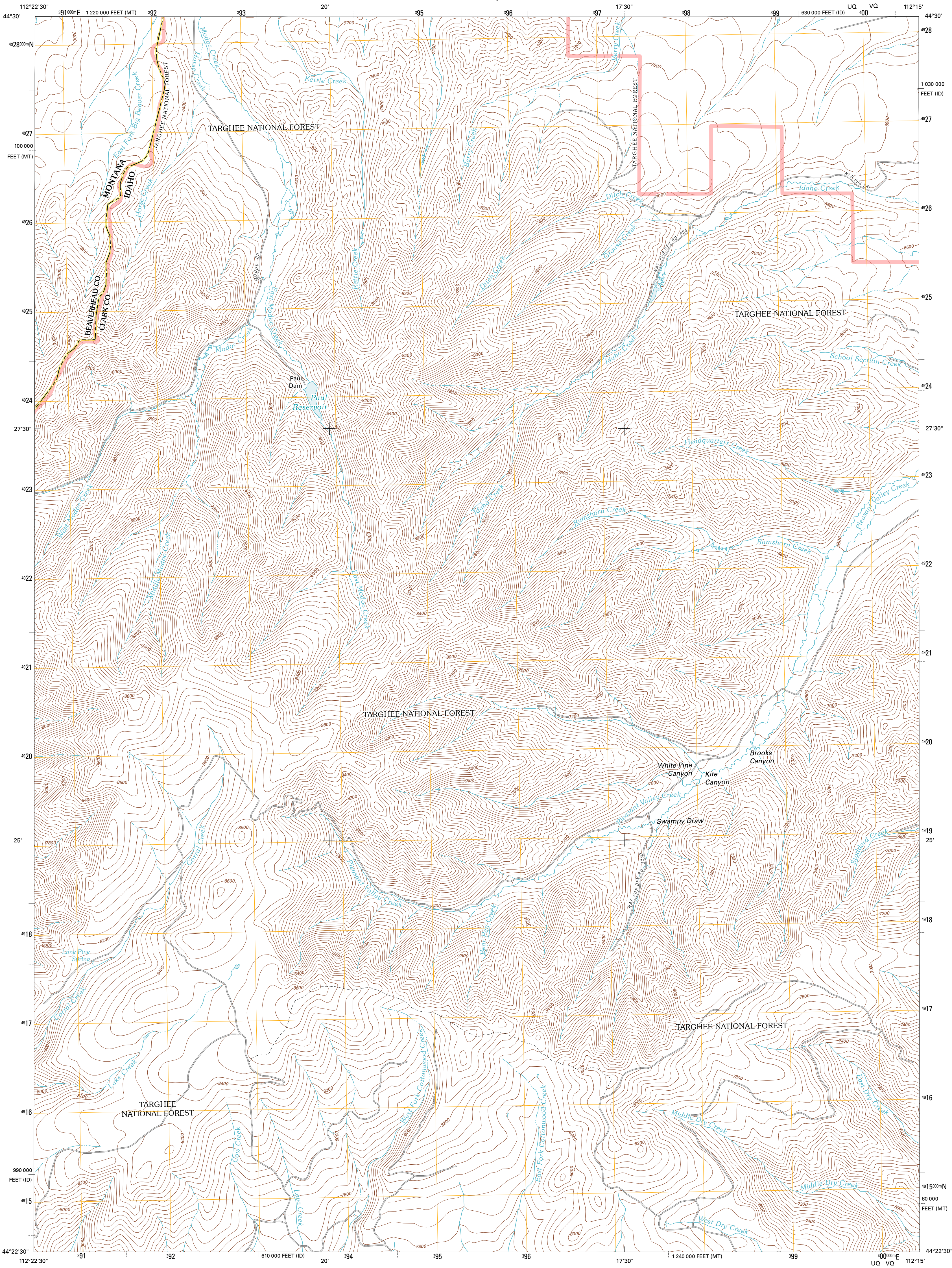




U.S. DEPARTMENT OF THE INTERIOR
U. S. GEOLOGICAL SURVEY

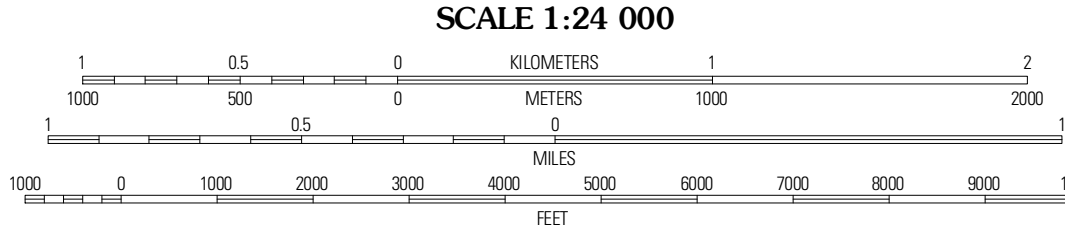
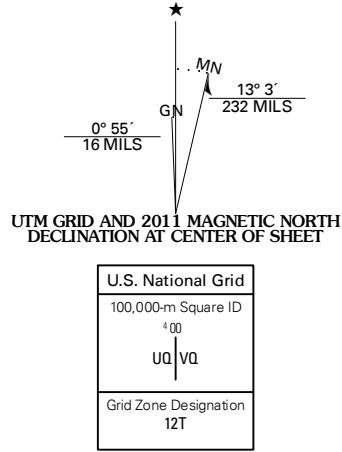


PAUL RESERVOIR QUADRANGLE
IDAHO-MONTANA
7.5-MINUTE SERIES



Produced by the United States Geological Survey
North American Datum of 1983 (NAD83)
World Geodetic System of 1984 (WGS84). Projection and
1 000-meter grid: Universal Transverse Mercator, Zone 12T
10 000-foot ticks: Idaho Coordinate System of 1983 (east
zone), Montana Coordinate System of 1983

Imagery.....NAIP, June 2009
Roads.....2006-2010 Tele Atlas
Roads within US Forest Service Lands.....FSTopo Data
with limited Forest Service updates, 2009
Names.....GNIS, 2010
Hydrography.....National Hydrography Dataset, 2009
Contours.....National Elevation Dataset, 2002
Boundaries.....Census, IBWC, IBC, USGS, 1972 - 2010



CONTOUR INTERVAL 40 FEET
NORTH AMERICAN VERTICAL DATUM OF 1988
This map was produced to conform with version 0.5.10
of the USGS US Topo Product Standard.
A metadata file associated with this product is draft version 0.5.16



ADJOINING 7.5 QUADRANGLES		
Snowline	Montida	Corral Creek
Tepes Draw	Paul Reservoir	Spencer North
Indian Creek	Thunder Gulch	Spencer South

ROAD CLASSIFICATION
Interstate Route
US Route
Ramp
State Route
4WD
US Route
FS Passenger Route
FS Primary Route
FS High Clearance Route
Check with local Forest Service unit for current travel conditions and restrictions.

PAUL RESERVOIR, ID-MT
2011