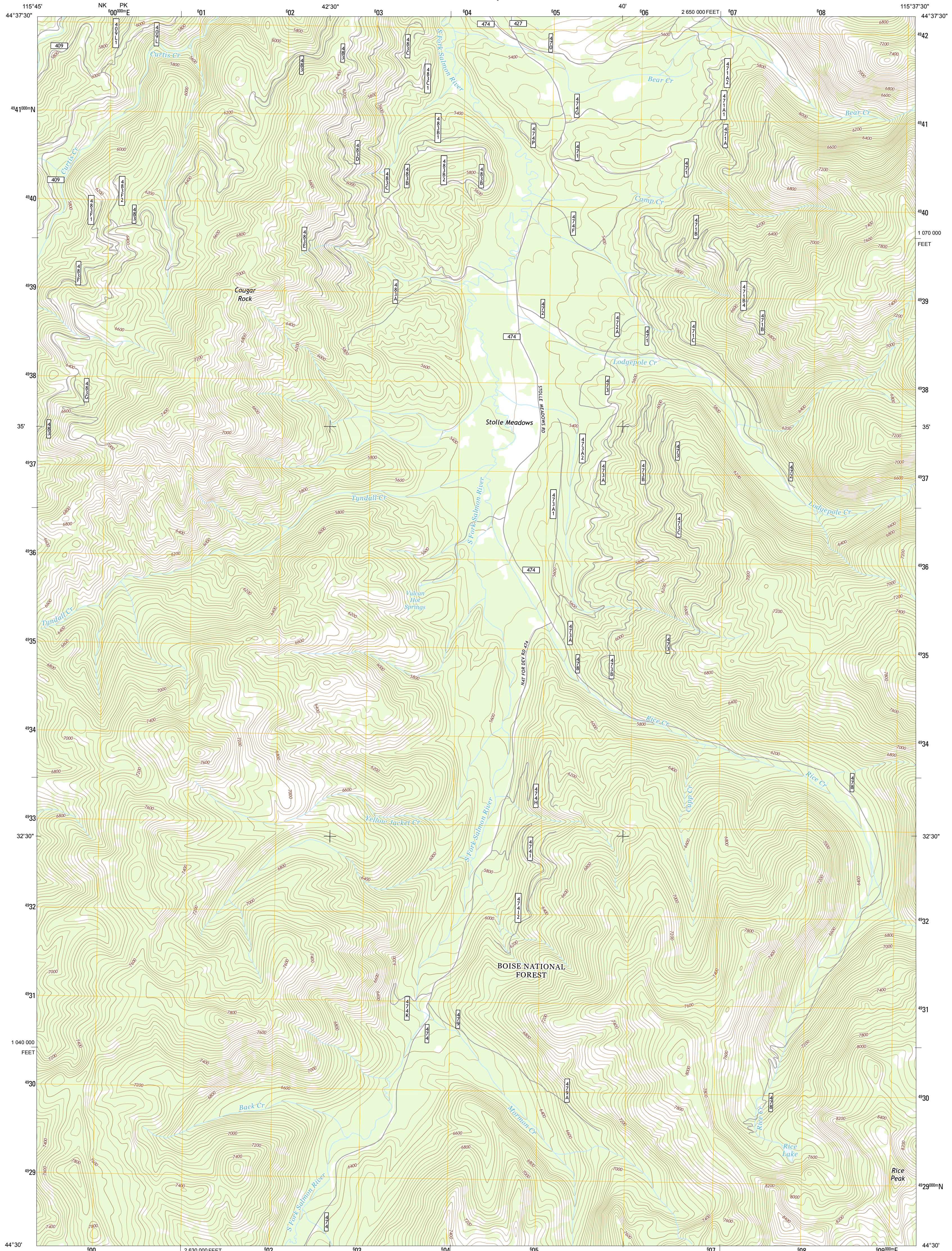




U.S. DEPARTMENT OF THE INTERIOR
U. S. GEOLOGICAL SURVEY



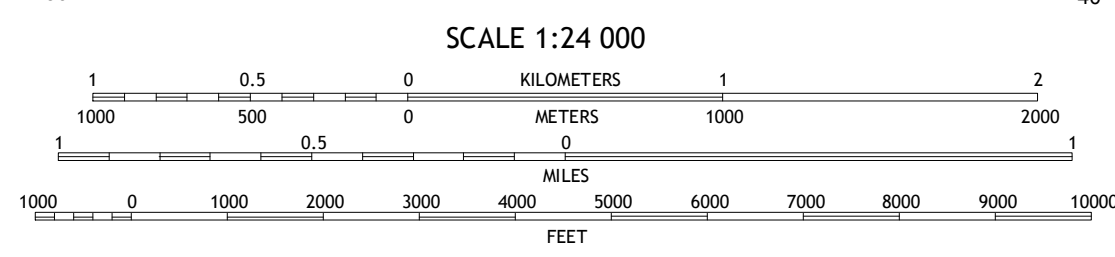
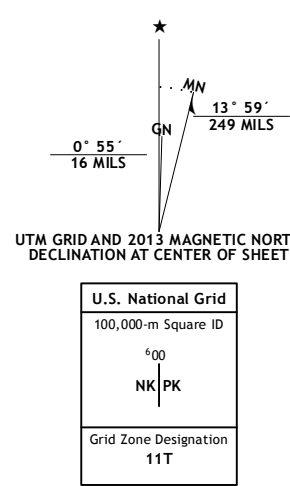
RICE PEAK QUADRANGLE
IDAHO-VALLEY CO.
7.5-MINUTE SERIES



Produced by the United States Geological Survey
North American Datum of 1983 (NAD83)
World Geodetic System of 1984 (WGS84). Projection and
1 000-meter grid: Universal Transverse Mercator, Zone 11T
10 000-foot ticks: Idaho Coordinate System of 1983 (west zone)

This map is not a legal document. Boundaries may be
generalized for this map scale. Private lands within government
reservations may not be shown. Obtain permission before
entering private lands.

Imagery: N.A.P., August 2011
Roads: 2006-2013 TomTom
Roads within US Forest Service Lands: FSTopo Data
with limited Forest Service updates, 2013
Names: GNS, 2013
Hydrography: National Hydrography Dataset, 2011
Contours: National Elevation Dataset, 2002
Boundaries: IBWC, IBC, USGS, 1972-2012
Public Land Survey System: BLM, 2011



CONTOUR INTERVAL 40 FEET
NORTH AMERICAN VERTICAL DATUM OF 1988
This map was produced to conform with the
National Geospatial Program US Topo Product Standard, 2011.
A metadata file associated with this product is draft version 0.6.15

QUADRANGLE LOCATION

Gold Fork Rock	Warm Lake	Landmark
Oro Mountain	Rice Peak	Tyndall Meadows
Bull Creek Hot Springs	Wild Buck Peak	Berrand Mountain

ADJOINING 7.5 QUADRANGLES

ROAD CLASSIFICATION

Expressway	Local Connector	State Route
Secondary Hwy	Local Road	FS High
Ramp	4WD	Clearance Route
Interstate Route	US Route	FS Passenger Route
FS Primary Route	FS Passenger Route	

Check with local Forest Service unit for current travel conditions and restrictions.

RICE PEAK, ID
2013

