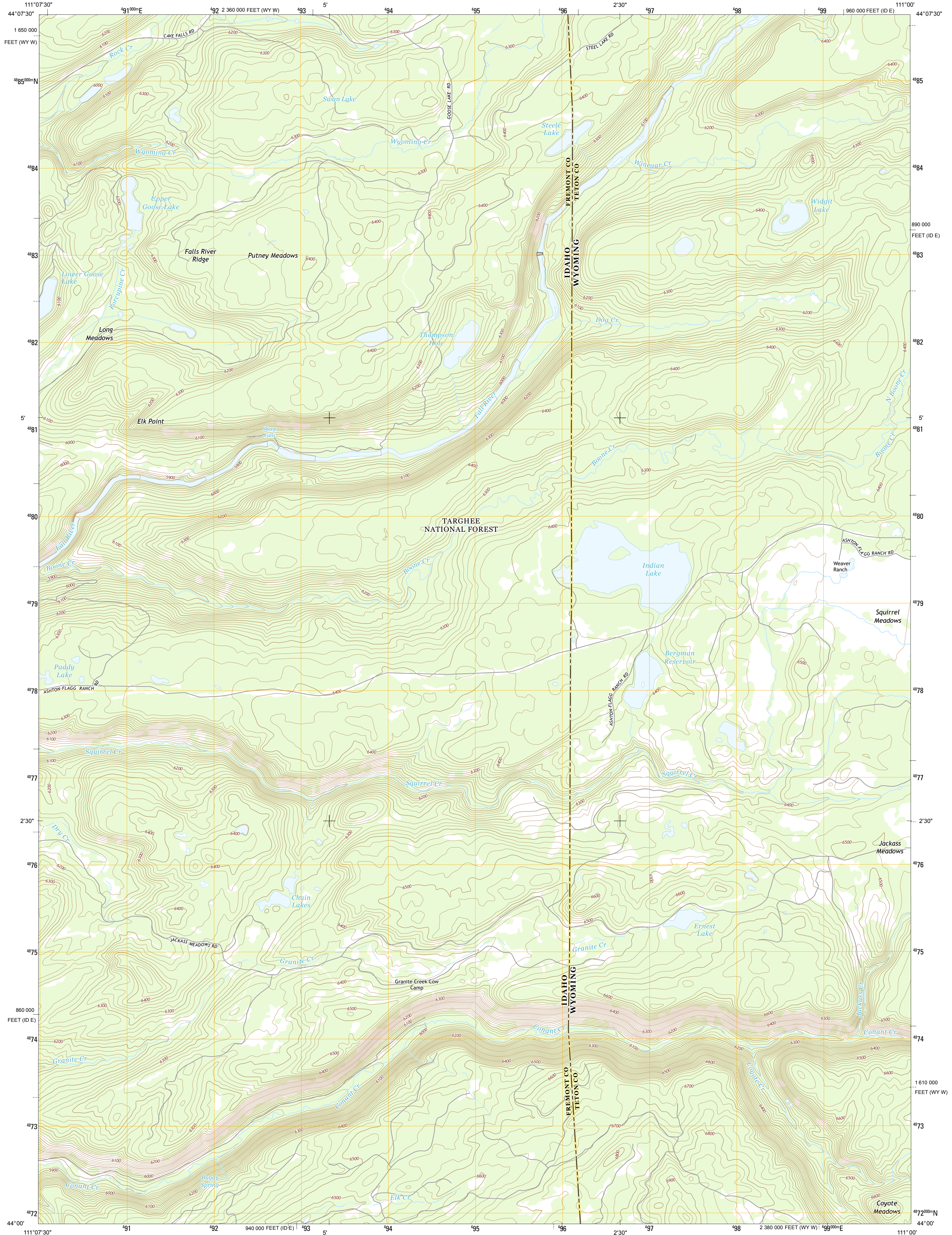




U.S. DEPARTMENT OF THE INTERIOR
U. S. GEOLOGICAL SURVEY



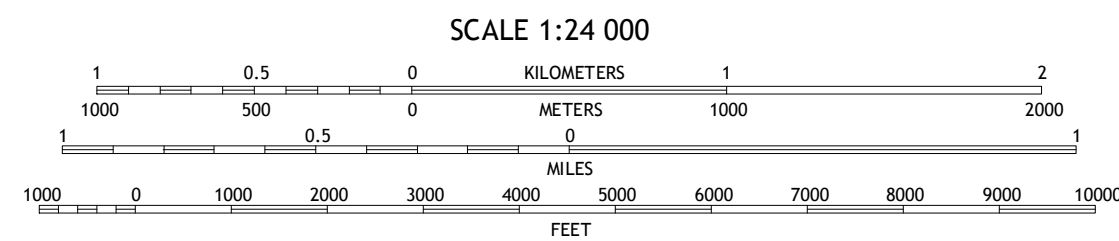
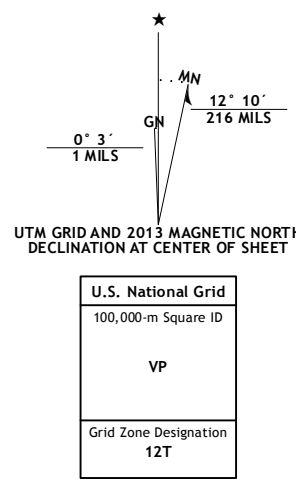
SHEEP FALLS QUADRANGLE
IDAHO-WYOMING
7.5-MINUTE SERIES



Produced by the United States Geological Survey
North American Datum of 1983 (NAD83)
World Geodetic System of 1984 (WGS84), Projection and
1 000-meter grid: Universal Transverse Mercator, Zone 12T
10 000-foot ticks: Idaho Coordinate System of 1983 (east zone),
Wyoming Coordinate System of 1983 (west zone)

This map is not a legal document. Boundaries may be
generalized for this map scale. Private lands within government
reservations may not be shown. Obtain permission before
entering private lands.

Imagery:NAIP, August 2011
Roads:2006-2013 TomTom
Roads within US Forest Service Lands:FS Topo Data
with limited Forest Service updates, 2013
Names:GNIS, 2013
Hydrography:National Hydrography Dataset, 2011
Contours:National Elevation Dataset, 1999
Boundaries:Census, BWC, IBC, USGS, 1972 - 2012
Public Land Survey System:BLM, 2011



CONTOUR INTERVAL 20 FEET
NORTH AMERICAN VERTICAL DATUM OF 1988

This map was produced to conform with the
National Geospatial Program US Topo Product Standard, 2011.
A metadata file associated with this product is draft version 0.6.15



QUADRANGLE LOCATION

Warm River Reservoir	Becher Falls	Cave Falls
Porcupine Lake	Sheep Falls	Hornby Peak
Lamont	McRenolds Reservoir	Rammell Mountain

ADJOINING 7.5 QUADRANGLES

ROAD CLASSIFICATION	
Expressway	Local Connector
Secondary Hwy	Local Road
Ramp	4WD
Interstate Route	US Route
FS Primary Route	FS Passenger Route
	FS High Clearance Route
	State Route

Check with local Forest Service unit
for current travel conditions and restrictions.

SHEEP FALLS, ID-WY
2013

