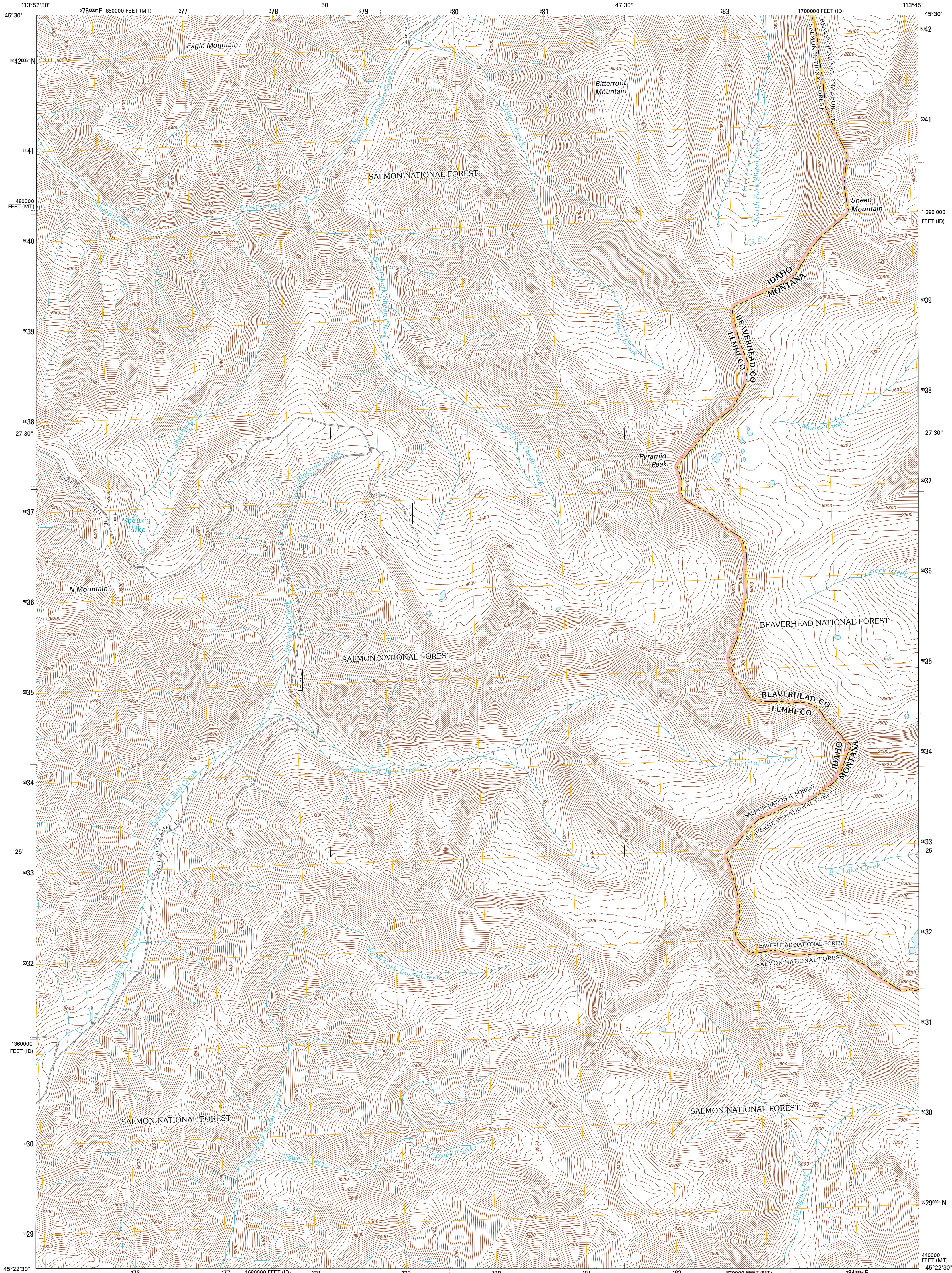




U.S. DEPARTMENT OF THE INTERIOR  
U. S. GEOLOGICAL SURVEY

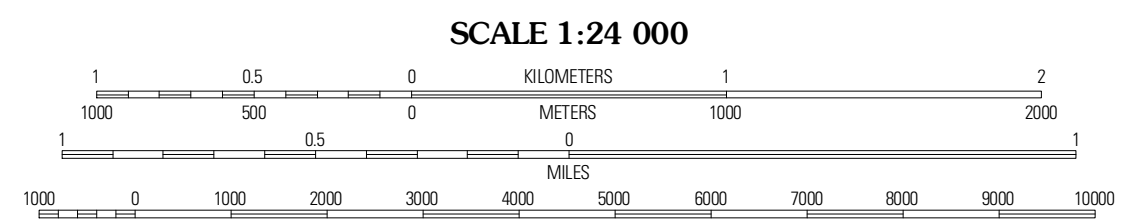
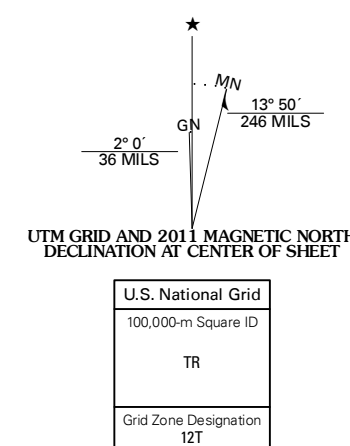


SHEWAG LAKE QUADRANGLE  
IDAHO-MONTANA  
7.5-MINUTE SERIES



Produced by the United States Geological Survey  
North American Datum of 1983 (NAD83)  
World Geodetic System of 1984 (WGS84). Projection and  
1 000-meter grid: Universal Transverse Mercator, Zone 12T  
10 000-foot ticks: Idaho Coordinate System of 1983 (central  
zone), Montana Coordinate System of 1983

Images: NAD, July 2009  
Roads: 2006-2010 Tele Atlas  
Roads within US Forest Service Lands: FSTopo Data  
with Limited Forest Service updates, 2009  
Names: National Hydrography Dataset, 2010  
Hydrography: National Hydrography Dataset, 2009  
Contours: National Elevation Dataset, 2001  
Boundaries: Census, IBWC, IBC, USGS, 1972 - 2010



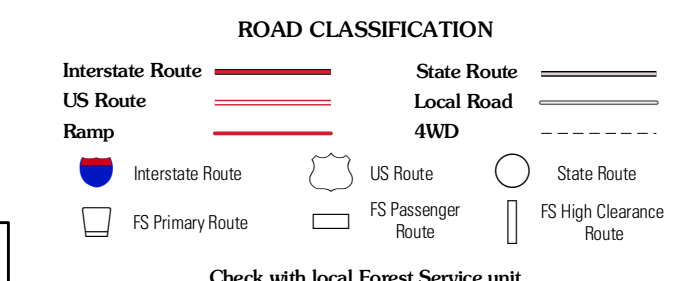
CONTOUR INTERVAL 40 FEET  
NORTH AMERICAN VERTICAL DATUM OF 1988  
This map was produced to conform with version 0.5.10  
of the USGS US Topo Product Standard.  
A metadata file associated with this product is draft version 0.5.16



QUADRANGLE LOCATION

Cabbonville	Big Hole Pass	Isaac Meadows
North Fork	Shewag Lake	Junco Mountain
Bird Creek	Badger Spring Gulch	Homer Youngs Peak

ADJOINING 7.5' QUADRANGLES



Check with local Forest Service unit  
for current travel conditions and restrictions.

SHEWAG LAKE, ID-MT  
2011