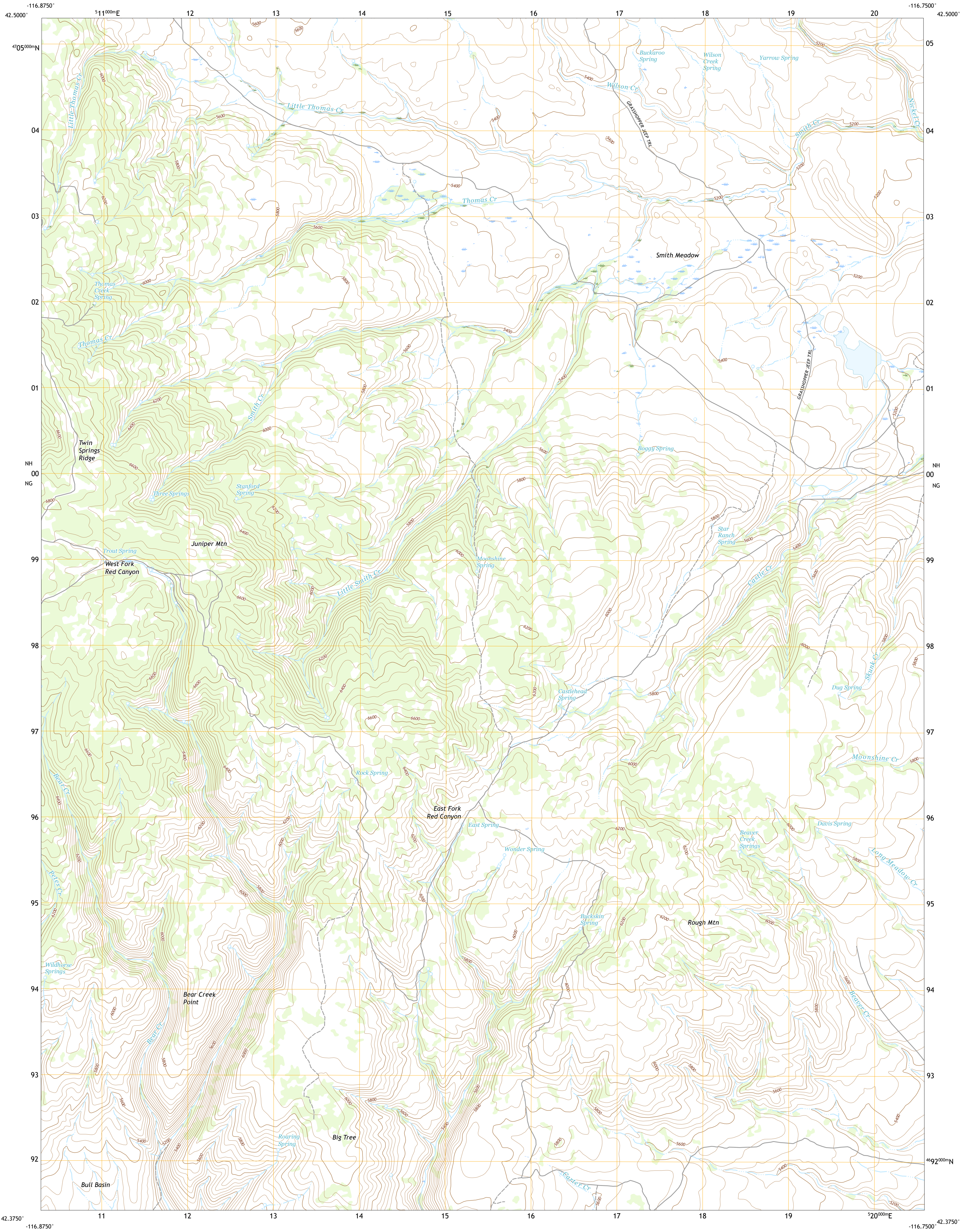




U.S. DEPARTMENT OF THE INTERIOR
U.S. GEOLOGICAL SURVEY



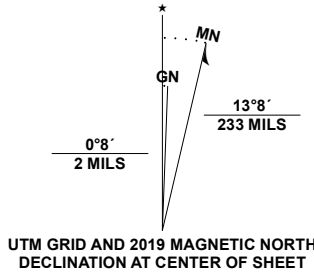
SMITH CREEK QUADRANGLE
IDAHO - OWYHEE COUNTY
7.5-MINUTE SERIES



Produced by the United States Geological Survey

North American Datum of 1983 (NAD83)
World Geodetic System of 1984 (WGS84). Projection and
1 000-meter grid/Universal Transverse Mercator, Zone 11T
This map is not a legal document. Boundaries may be
generalized for this map scale. Private lands within government
reservations may not be shown. Obtain permission before
entering private lands.

Imagery.....NAIP, August 2017 - January 2018
Roads.....U.S. Census Bureau, 2016
Names.....GNIS, 1979 - 2020
Hydrography.....National Hydrography Dataset, 2004 - 2019
Contours.....National Elevation Dataset, 2001
Boundaries.....Multiple sources: see metadata file, 2017 - 2018
Public Land Survey System.....BLM, 2019
Wetlands.....FWS National Wetlands Inventory, 1983

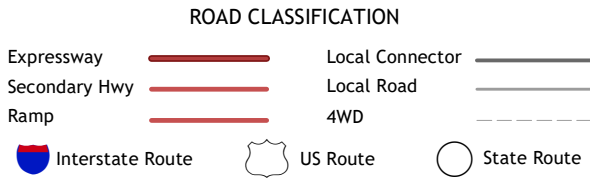


CONTOUR INTERVAL 40 FEET
NORTH AMERICAN VERTICAL DATUM OF 1988
This map was produced to conform with the
National Geospatial Program US Topo Product Standard, 2011.
A metadata file associated with this product is draft version 0.6.18



| | | |
|---|---|---|
| 1 | 2 | 3 |
| 4 | 5 | 6 |
| 7 | 8 | 9 |

1 Fairlawn
2 Pleasant Valley
3 Slack Mountain
4 Redwood Ridge
5 Castro Table
6 Bull Basin Camp
7 Red Basin
8 Brace Flat



SMITH CREEK, ID
2020

