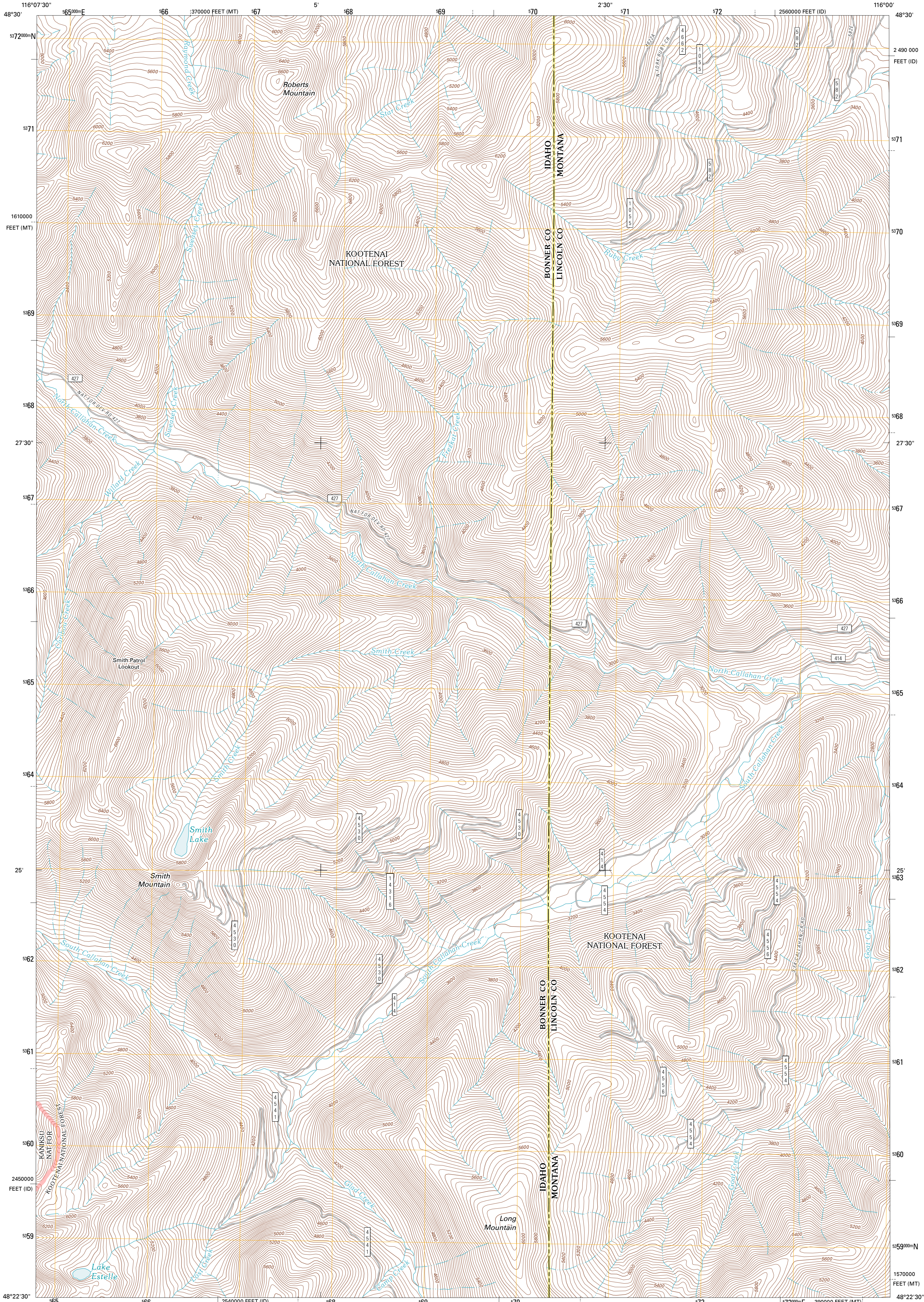




U.S. DEPARTMENT OF THE INTERIOR  
U. S. GEOLOGICAL SURVEY

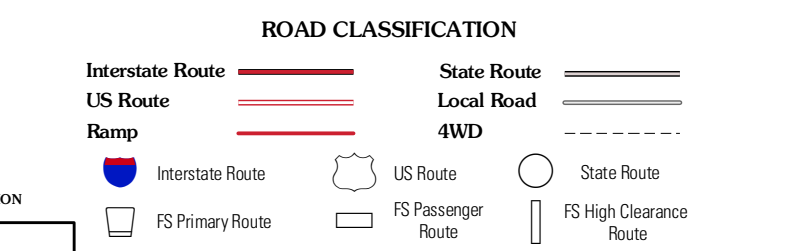
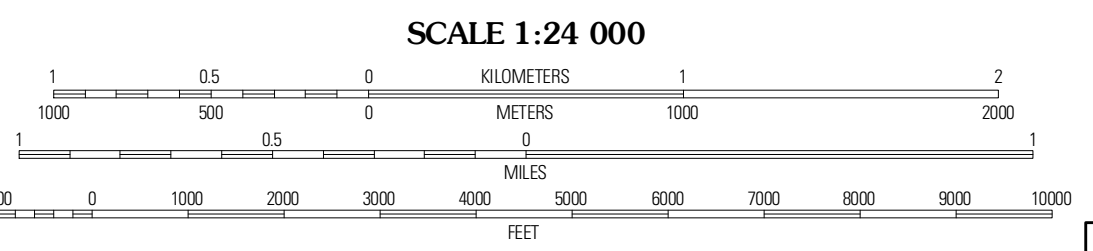
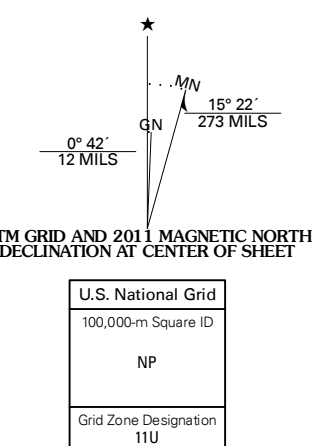


SMITH MOUNTAIN QUADRANGLE  
IDAHO-MONTANA  
7.5-MINUTE SERIES



Produced by the United States Geological Survey  
North American Datum of 1983 (NAD83)  
World Geodetic System of 1984 (WGS84). Projection and  
1 000-meter grid: Universal Transverse Mercator, Zone 11U  
10 000-foot ticks: Idaho Coordinate System of 1983 (west  
zone), Montana Coordinate System of 1983

Imagery: NADP, July 2009  
Roads: ©2006-2010 Tele Atlas  
Roads within US Forest Service Lands: FSTopo Data  
with limited Forest Service updates, 2009  
Names: ©2006-2010 Tele Atlas  
Hydrography: National Hydrography Dataset, 2009  
Contours: National Elevation Dataset, 2001  
Boundaries: Census, IBWC, IBC, USGS, 1972 - 2010



QUADRANGLE LOCATION

Clifty Mountain	Loonia	Killman Lake
Mount Penn	Smith Mountain	Troy
Treat Peak	Burning Mountain	Spar Lake

ADJOINING 7.5' QUADRANGLES

Check with local Forest Service unit  
for current travel conditions and restrictions.

**SMITH MOUNTAIN, ID-MT  
2011**

CONTOUR INTERVAL 40 FEET  
NORTH AMERICAN VERTICAL DATUM OF 1988

This map was produced to conform with version 0.5.10  
of the USGS US Topo Product Standard.  
A metadata file associated with this product is draft version 0.5.16