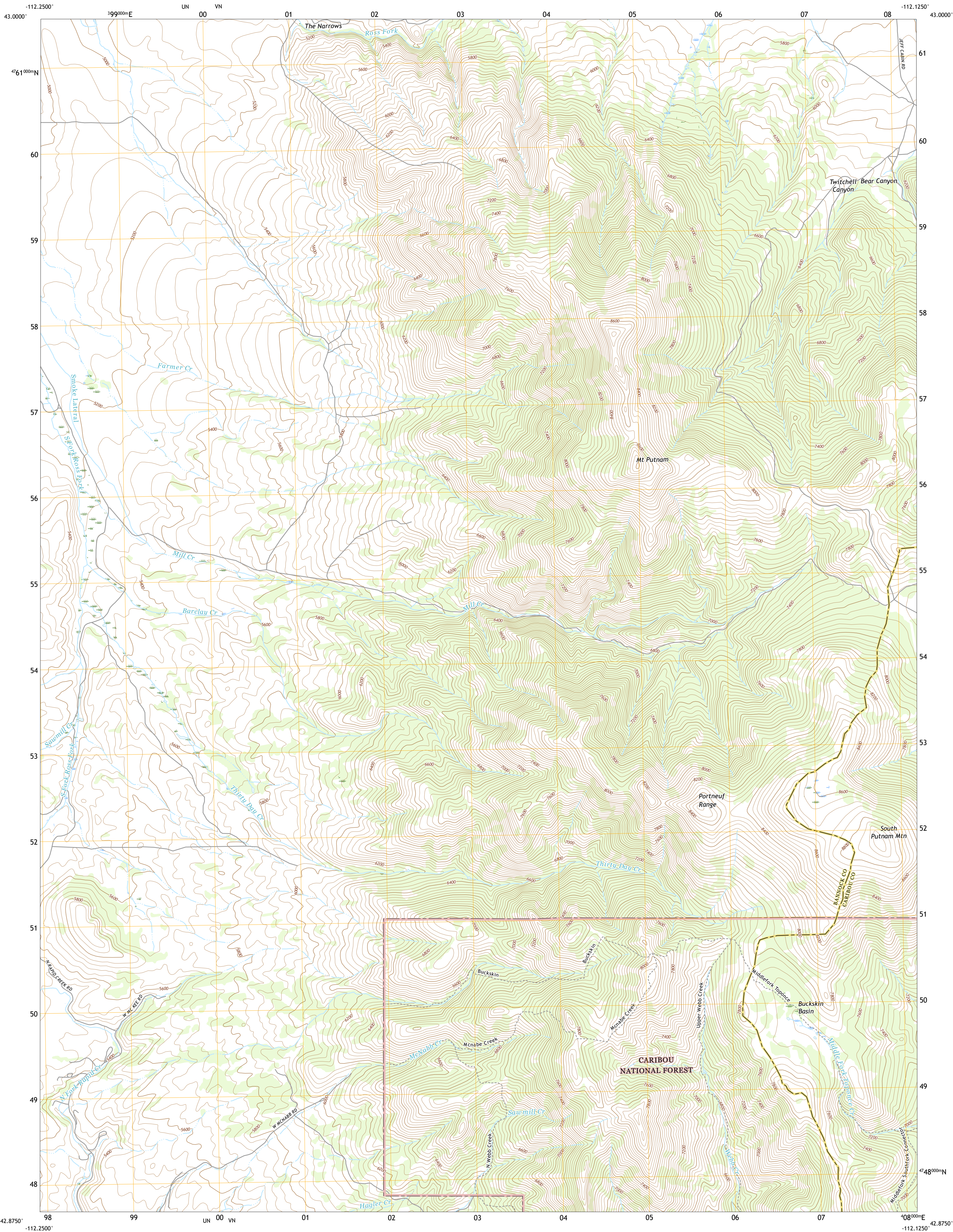




U.S. DEPARTMENT OF THE INTERIOR
U.S. GEOLOGICAL SURVEY

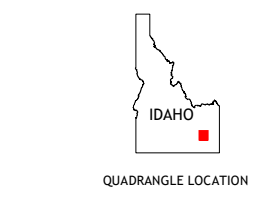
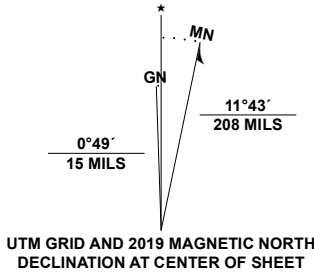


SOUTH PUTNAM MOUNTAIN QUADRANGLE
IDAHO
7.5-MINUTE SERIES



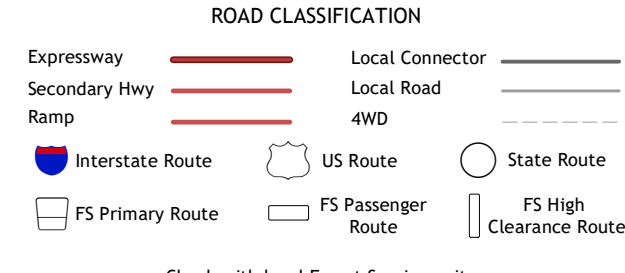
Produced by the United States Geological Survey
North American Datum of 1983 (NAD83)
World Geodetic System of 1984 (WGS84). Projection and
1 000-meter grid: Universal Transverse Mercator, Zone 12T
This map is not a legal document. Boundaries may be
generalized for this map scale. Private lands within government
reservations may not be shown. Obtain permission before
entering private lands.

Imagery.....N.A.P., June 2017 - January 2018
Roads.....U.S. Census Bureau, 2016
Roads within US Forest Service Lands.....FSTopo
Data with limited Forest Service updates, 2013
Names.....GNIS, 1979 - 2020
Hydrography.....National Hydrography Dataset, 2002 - 2020
Contours.....National Elevation Dataset, 1999 - 2001
Boundaries.....Multiple sources: see metadata file 2017, 2018
Public Land Survey System.....BLM, 2019
Wetlands.....FWS National Wetlands Inventory, 1980



1	2	3
4	5	6
7	8	9

1 Buckskin Basin
2 Yandell Springs
3 Lincoln Peak
4 Moonlight Mountain
5 Jeff Cabin Creek
6 Inkom
7 Bonneville Peak
8 Bear Camp Gulch



Check with local Forest Service unit
for current travel conditions and restrictions.

**SOUTH PUTNAM MOUNTAIN, ID
2020**

