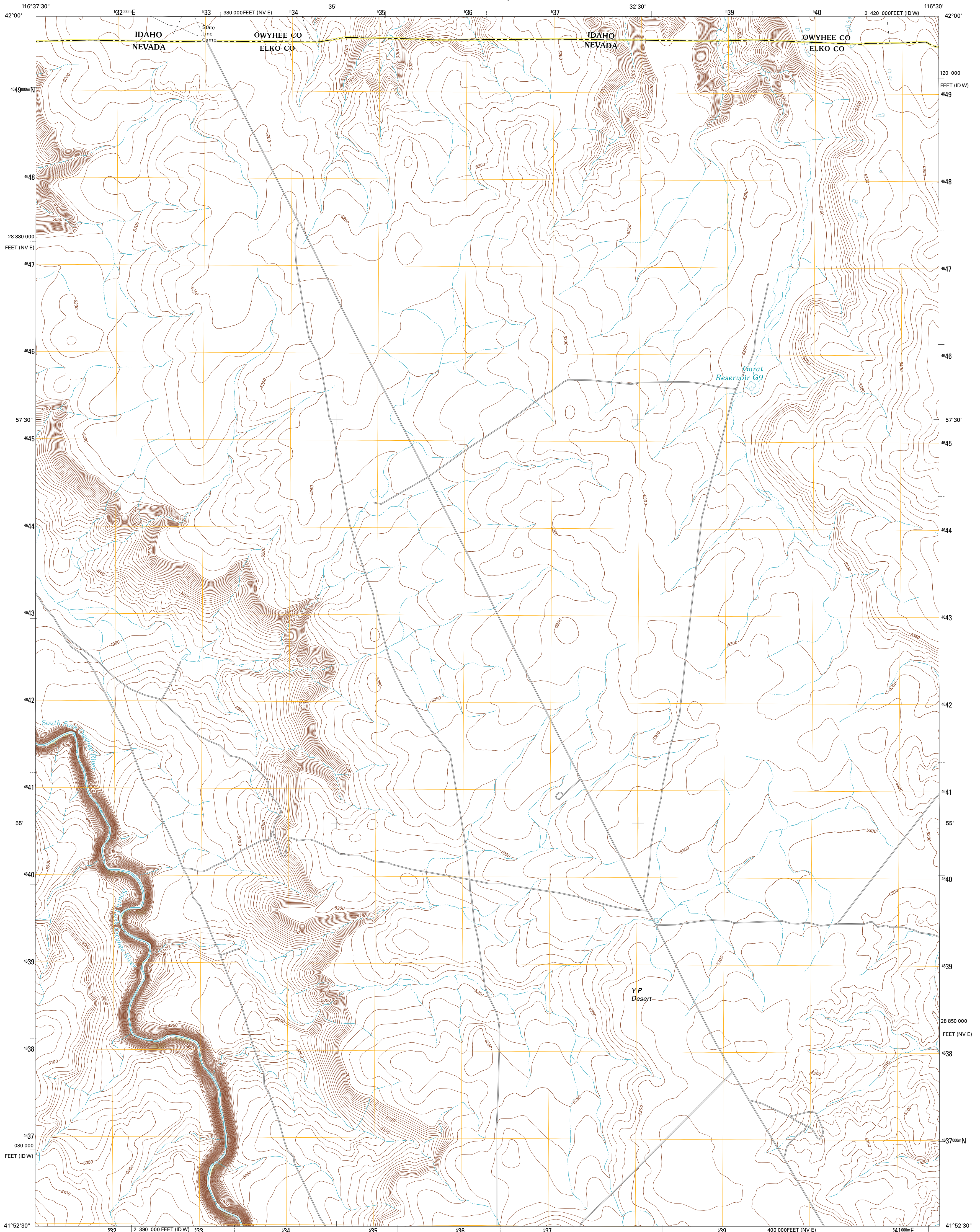




U.S. DEPARTMENT OF THE INTERIOR
U. S. GEOLOGICAL SURVEY

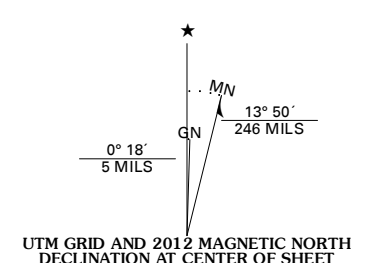


STATE LINE CAMP QUADRANGLE
IDAHO-NEVADA
7.5-MINUTE SERIES

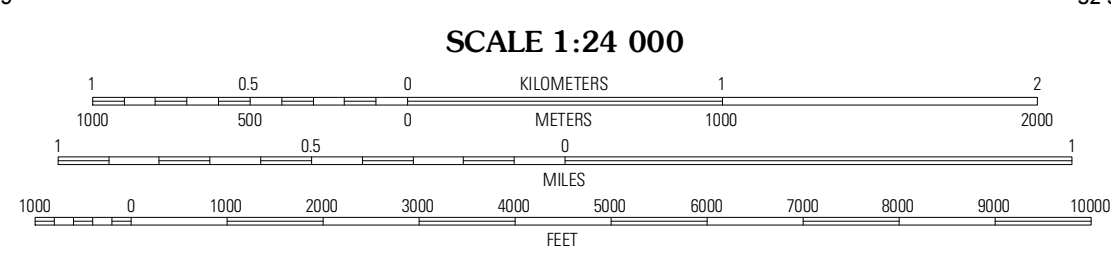


Produced by the United States Geological Survey
North American Datum of 1983 (NAD83)
World Geodetic System of 1984 (WGS84). Projection and
1 000-meter grid: Universal Transverse Mercator, Zone 11T
10 000-foot ticks: Nevada Coordinate System of 1983 (east
zone), Idaho Coordinate System of 1983 (west zone)

Imagery.....NAP, July 2010
Roads.....©2006-2011 TomTom
Names.....GNS, 2011
Hydrography.....National Hydrography Dataset, 2010
Contours.....National Elevation Dataset, 2002
Boundaries.....Census, IBWC, IBC, USGS, 1972 - 2010



U.S. National Grid
100 000-ft Square ID
11T
Grid Zone Designation
11T



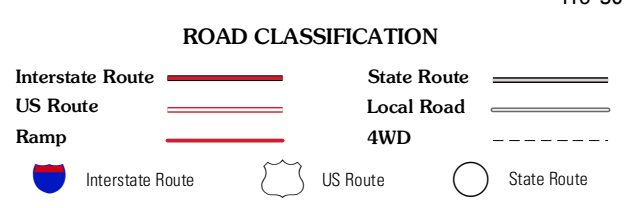
CONTOUR INTERVAL 10 FEET
NORTH AMERICAN VERTICAL DATUM OF 1988
This map was produced to conform with the
National Geospatial Program US Topo Product Standard, 2011.
A metadata file associated with this product is draft version 0.6.1



QUADRANGLE LOCATION

Bull Camp Butte	Four Corners	Juniper Basin
Rubber Hill	State Line Camp	Hat Peak
Twelvemile Flat	Peterson Table West	Peterson Table East

ADJOINING 7.5' QUADRANGLES



STATE LINE CAMP, ID-NV
2012