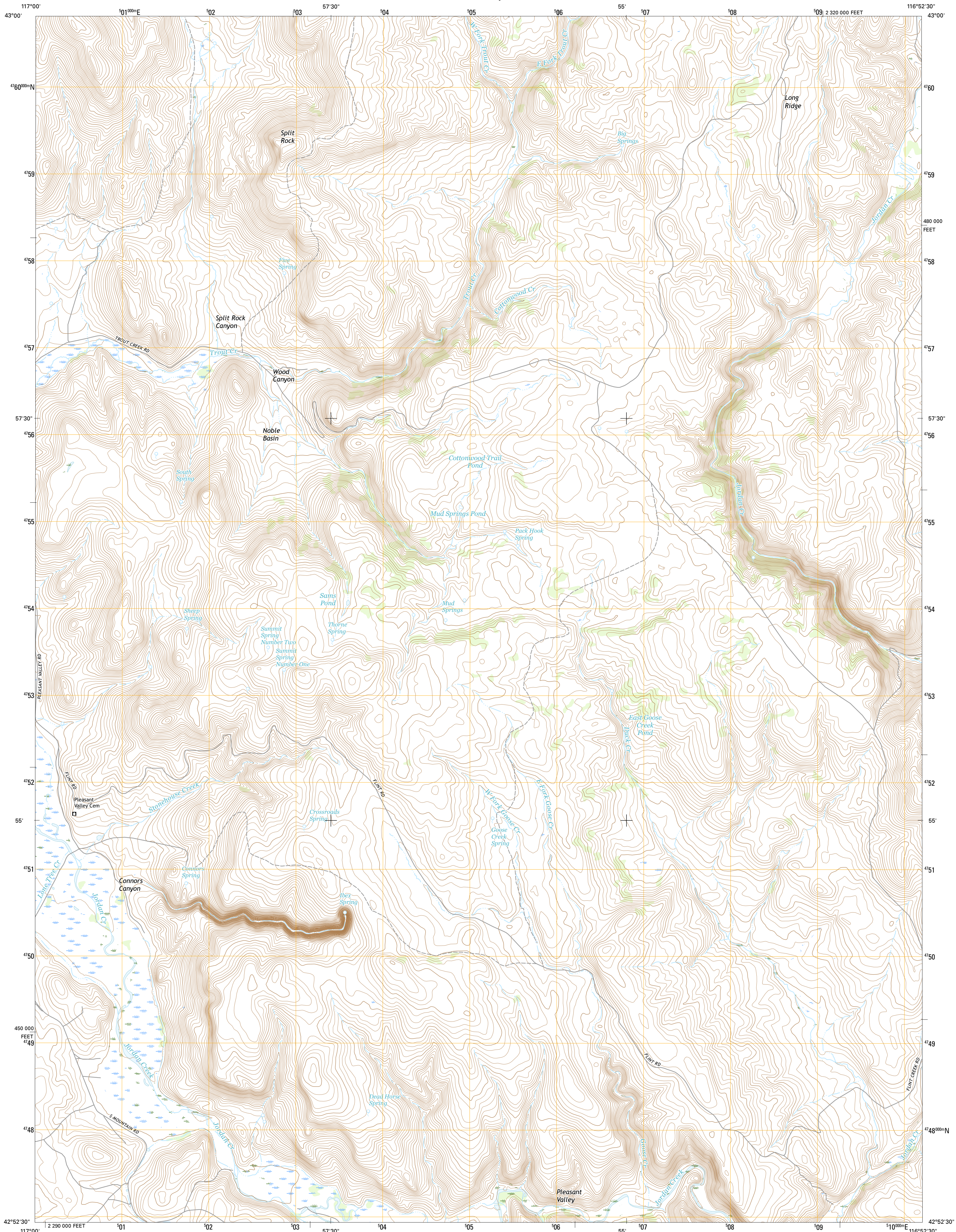




U.S. DEPARTMENT OF THE INTERIOR  
U.S. GEOLOGICAL SURVEY



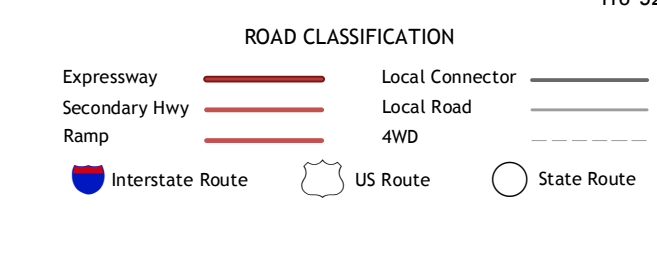
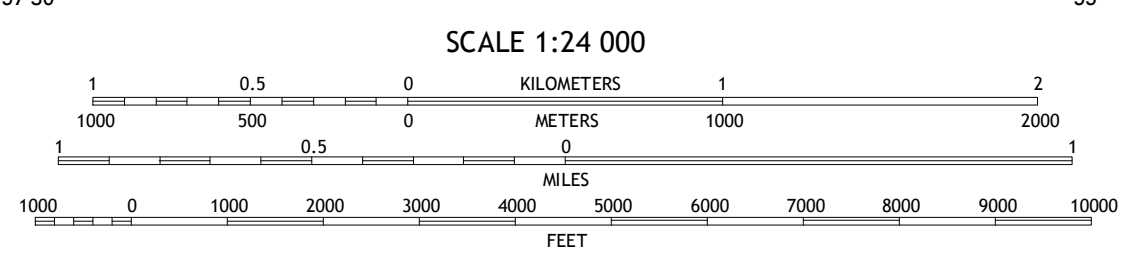
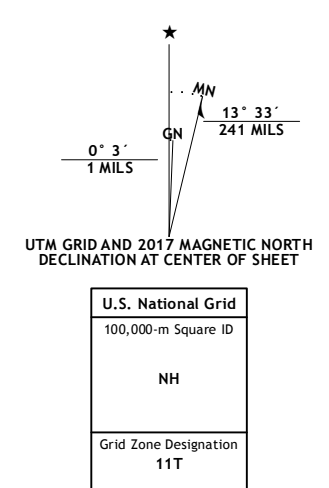
STONEHOUSE CREEK QUADRANGLE  
IDAHO-OWYHEE CO.  
7.5-MINUTE SERIES



**Produced by the United States Geological Survey**  
North American Datum of 1983 (NAD83)  
World Geodetic System of 1984 (WGS84) Projection and  
1 000-meter grid: Universal Transverse Mercator, Zone 11T  
10 000-foot ticks: Idaho Coordinate System of 1983 (west zone)

This map is not a legal document. Boundaries may be generalized for this map scale. Private lands within government reservations may not be shown. Obtain permission before entering private lands.

Imagery.....	NIP, January 2016
Roads.....	U.S. Census Bureau, 2015 - 2016
Names.....	GNIS, 2016
Hydrography.....	National Hydrography Dataset, 2016
Contours.....	National Elevation Dataset, 2001
Boundaries.....	Multiple sources; see metadata file 1972 - 2016
Public Land Survey System.....	BLM, 2015
Wetlands.....	FWS National Wetlands Inventory 1977 - 2014



ADJOINING QUADRANGLES

1	2	3
4	5	6
7	8	

1 Hooker Creek  
2 Swisher Mountain  
3 De Lamar  
4 Jordan Valley  
5 Flint  
6 Parsnip Peak  
7 Williams Creek  
8 Combination Ridge

STONEHOUSE CREEK, ID  
2017

