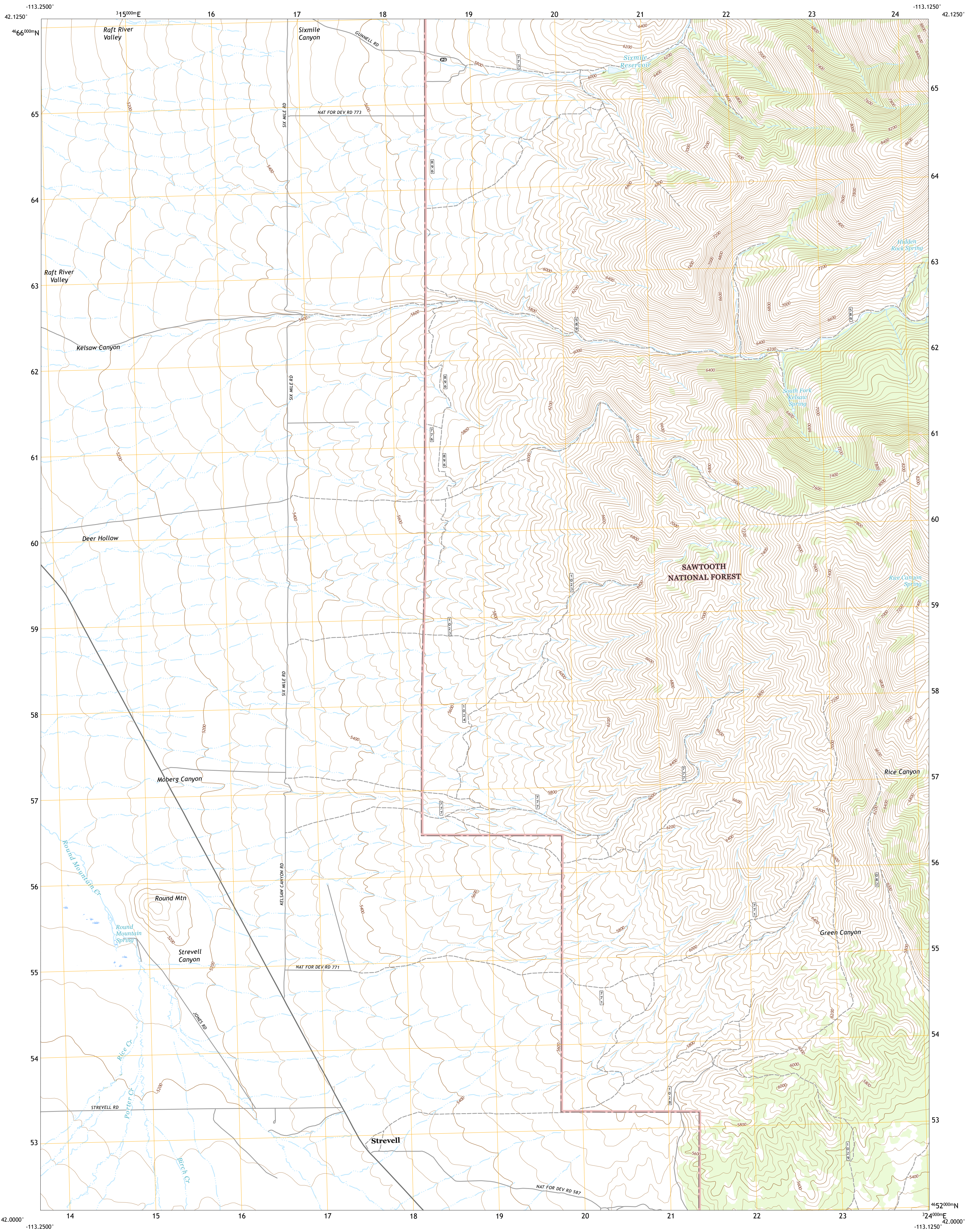




U.S. DEPARTMENT OF THE INTERIOR  
U.S. GEOLOGICAL SURVEY



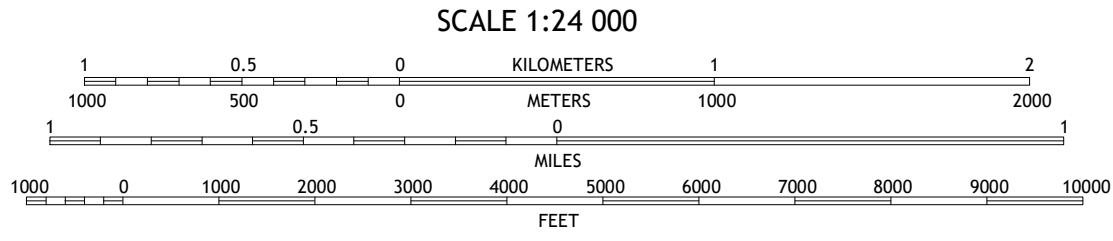
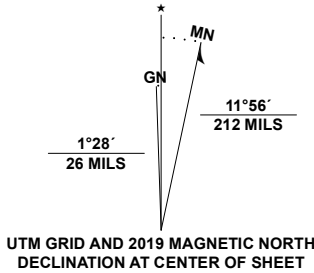
STREVELL QUADRANGLE  
IDAHO - CASSIA COUNTY  
7.5-MINUTE SERIES



Produced by the United States Geological Survey

North American Datum of 1983 (NAD83)  
World Geodetic System of 1984 (WGS84). Projection and  
1 000-meter grid: Universal Transverse Mercator, Zone 12T  
This map is not a legal document. Boundaries may be  
generalized for this map scale. Private lands within government  
reservations may not be shown. Obtain permission before  
entering private lands.

Imagery.....NAP, June 2017 - January 2018  
Roads.....U.S. Census Bureau, 2016  
Roads within US Forest Service Lands.....FSTopo  
Data with limited Forest Service updates, 2013 - 2016  
Names.....GNIS, 1979 - 2020  
Hydrography.....National Hydrography Dataset, 2002 - 2020  
Contours.....National Elevation Dataset, 2002 - 2019  
Boundaries.....Multiple sources: see metadata file 2017 - 2018  
Public Land Survey System.....BLM, 2019  
Wetlands.....FWS National Wetlands Inventory 1984 - 1985



1	2	3
4	5	6
7	8	9

ADJOINING QUADRANGLES

1 Bridge  
2 Sandrock Canyon  
3 Sweetzer Canyon  
4 Nat  
5 Black Pine Peak  
6 Rosevere Point  
7 Kelton Pass  
8 Curlew Junction

ROAD CLASSIFICATION	
Expressway	Local Connector
Secondary Hwy	Local Road
Ramp	4WD
Interstate Route	US Route
FS Primary Route	FS Passenger Route
	FS High Clearance Route

Check with local Forest Service unit  
for current travel conditions and restrictions.

STREVELL, ID  
2020

