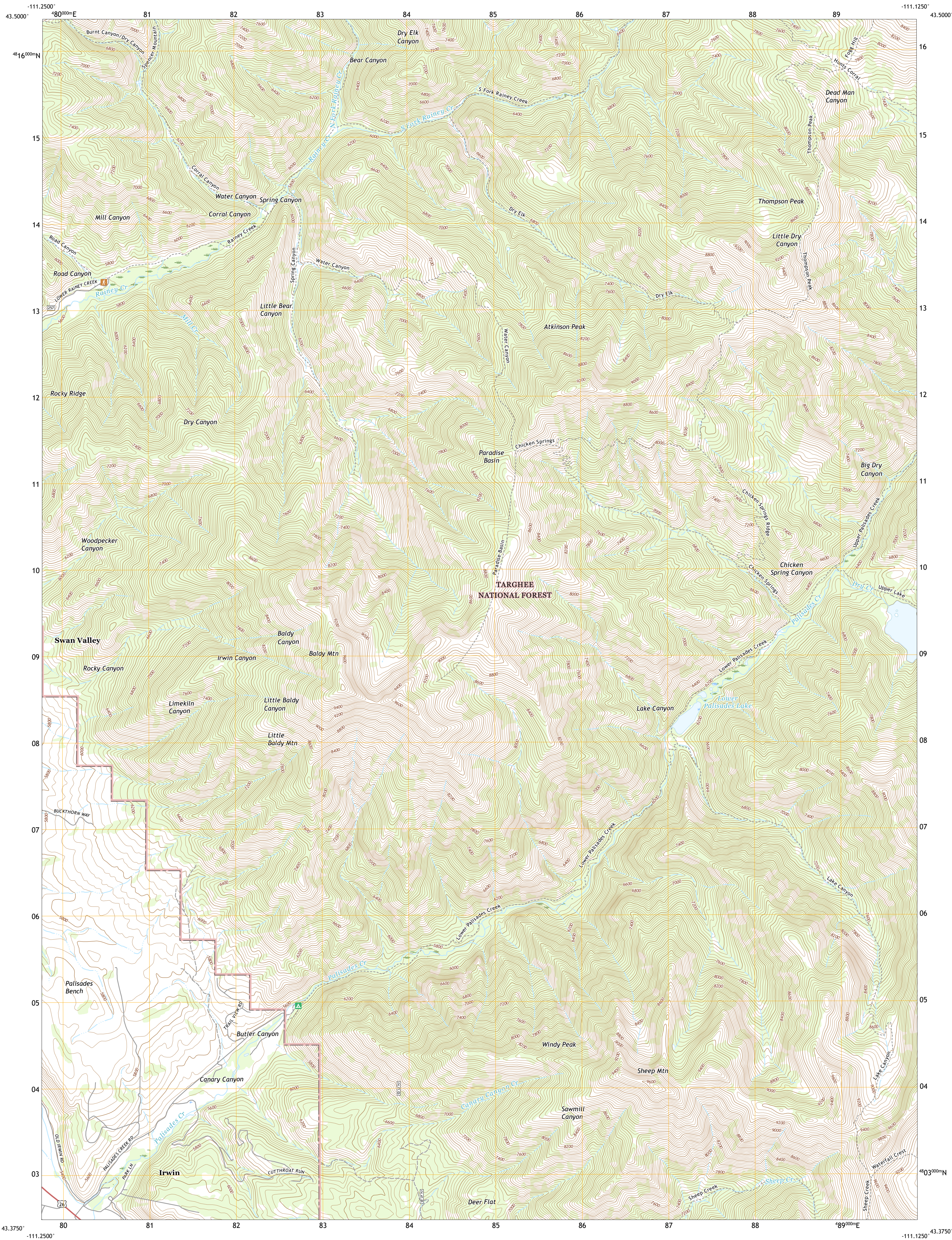




U.S. DEPARTMENT OF THE INTERIOR  
U.S. GEOLOGICAL SURVEY

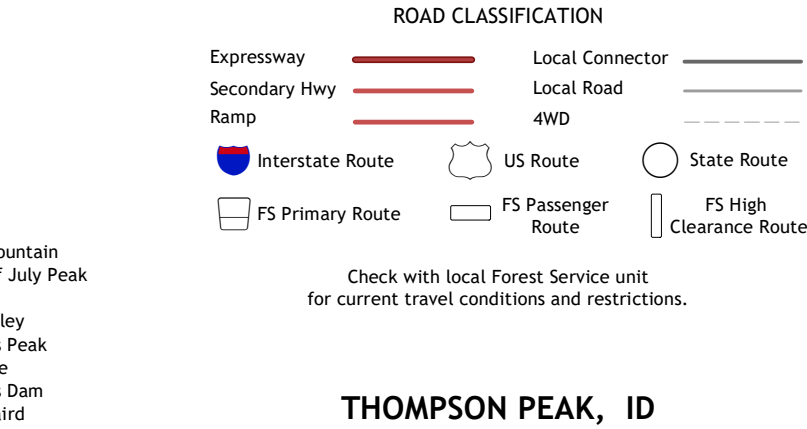
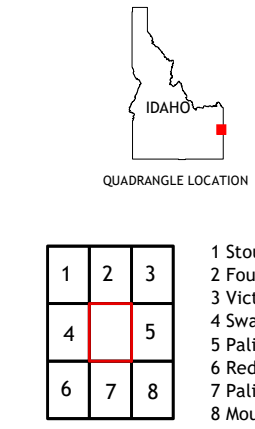
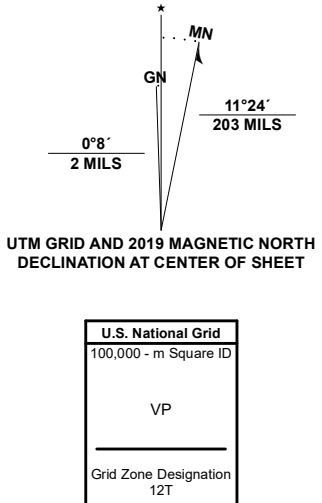


THOMPSON PEAK QUADRANGLE  
IDAHO - BONNEVILLE COUNTY  
7.5-MINUTE SERIES



Produced by the United States Geological Survey  
North American Datum of 1983 (NAD83)  
World Geodetic System of 1984 (WGS84). Projection and  
1 000-meter grid/Universal Transverse Mercator, Zone 12T  
This map is not a legal document. Boundaries may be  
generalized for this map scale. Private lands within government  
reservations may not be shown. Obtain permission before  
entering private lands.

Imagery.....N.A.P., August 2017 - January 2018  
Roads.....U.S. Census Bureau, 2016  
Roads within US Forest Service Lands.....FSTopo  
Data with limited Forest Service updates, 2013  
Names.....GNIS, 1979 - 2019  
Hydrography.....National Hydrography Dataset, 2001 - 2020  
Contours.....National Elevation Dataset, 2000  
Boundaries.....Multiple sources: see metadata file, 2017 - 2018  
Public Land Survey System.....BLM, 2019  
Wetlands.....FWS National Wetlands Inventory, 1980



1	2	3	1 Scouts Mountain
4	5	2 Fourth of July Peak	
6	7	3 Victor	
		4 Swan Valley	
		5 Palisades Peak	
		6 Red Ridge	
		7 Palisades Dam	
		8 Mount Baird	

THOMPSON PEAK, ID  
2020

