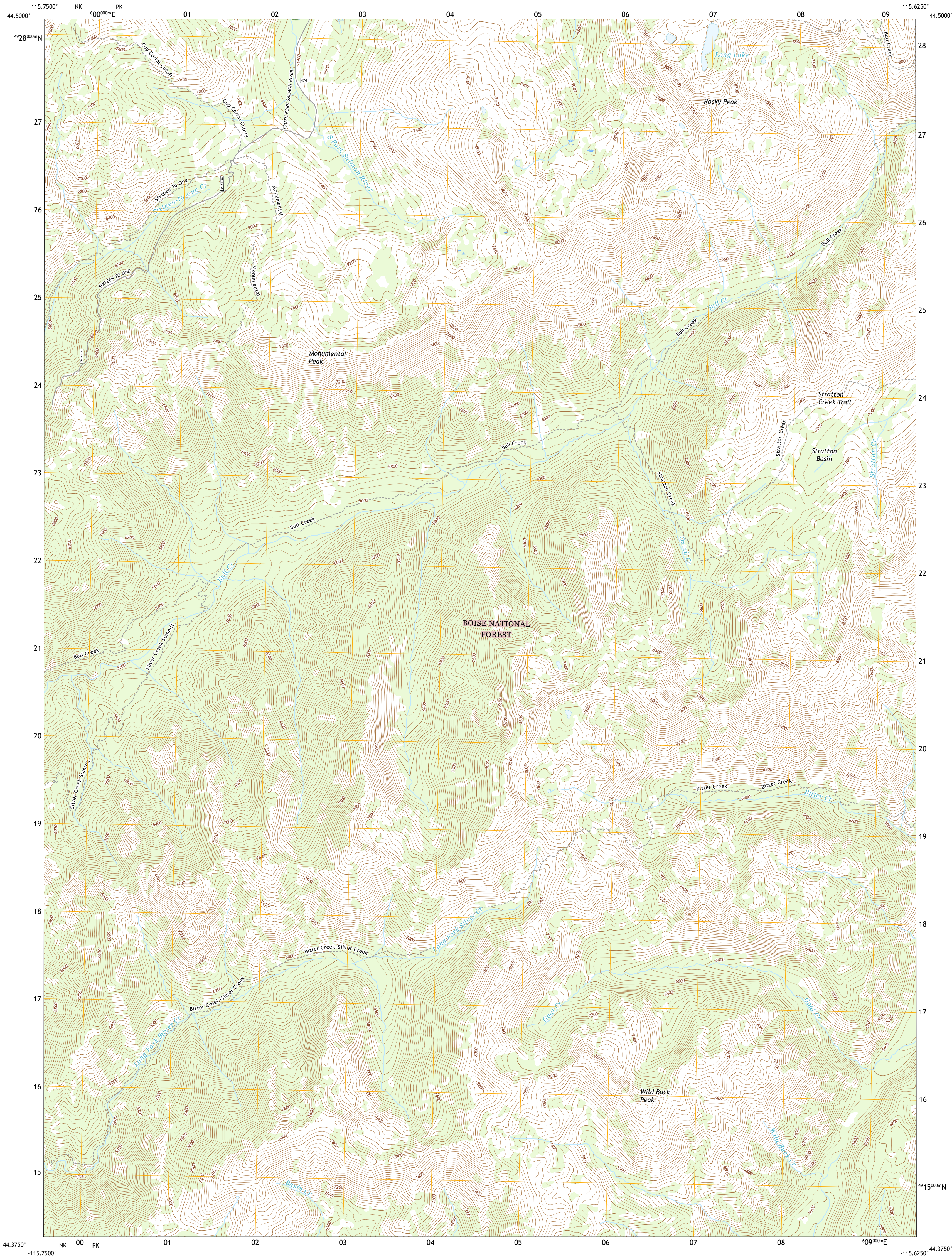




U.S. DEPARTMENT OF THE INTERIOR  
U.S. GEOLOGICAL SURVEY

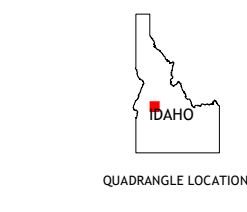
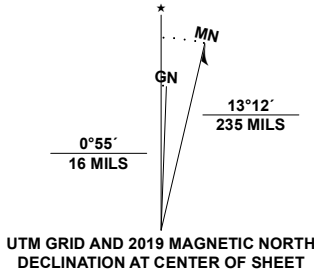


WILD BUCK PEAK QUADRANGLE  
IDAHO - VALLEY COUNTY  
7.5-MINUTE SERIES



Produced by the United States Geological Survey  
North American Datum of 1983 (NAD83)  
World Geodetic System of 1984 (WGS84). Projection and  
1 000-meter grid: Universal Transverse Mercator, Zone 11T  
This map is not a legal document. Boundaries may be  
generalized for this map scale. Private lands within government  
reservations may not be shown. Obtain permission before  
entering private lands.

Imagery.....NAIP, September 2017 - January 2018  
Roads.....U.S. Census Bureau, Not Available  
Roads within US Forest Service Lands.....FSTopo Data  
with limited Forest Service updates, 2013  
Names.....GNIS, 1979 - 2019  
Hydrography.....National Hydrography Dataset, 2001 - 2019  
Contours.....National Elevation Dataset, 2002  
Boundaries.....Multiple sources: see metadata file 2017 - 2018  
Public Land Survey System.....BLM, 2019  
Wetlands.....FWS National Wetlands Inventory 1984



1	2	3
4	5	6
7	8	9

1 Oro Mountain  
2 Rice Peak  
3 Tyndall Meadows  
4 Bull Creek Hot Springs  
5 Bernard Mountain  
6 Bolling Springs  
7 Deadwood Reservoir  
8 Whitehawk Mountain

ROAD CLASSIFICATION

Expressway  
Secondary Hwy  
Ramp  
Interstate Route  
FS Primary Route

Local Connector  
Local Road  
4WD  
US Route  
FS Passenger Route  
State Route  
FS High Clearance Route

Check with local Forest Service unit  
for current travel conditions and restrictions.

WILD BUCK PEAK, ID  
2020

