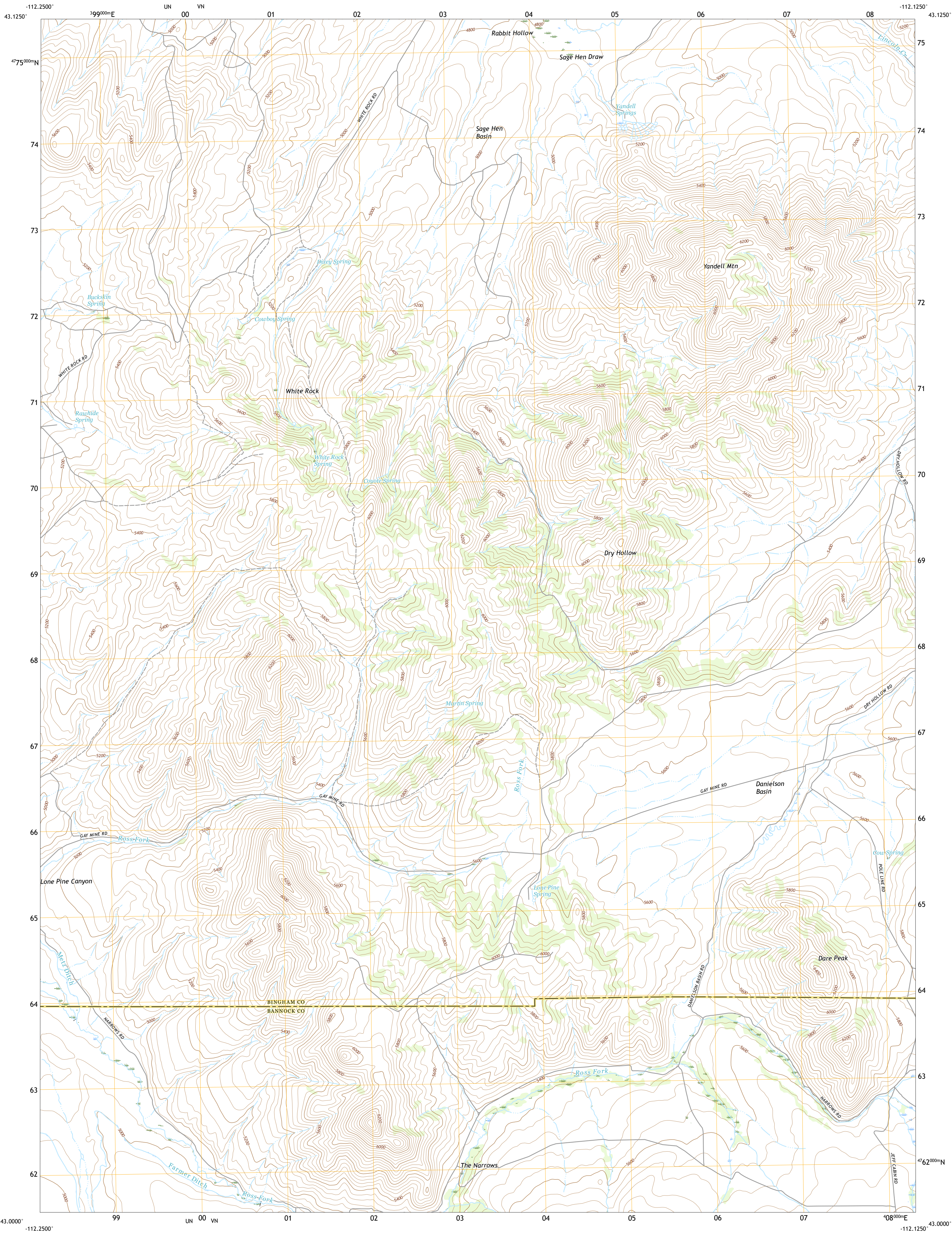




U.S. DEPARTMENT OF THE INTERIOR
U.S. GEOLOGICAL SURVEY



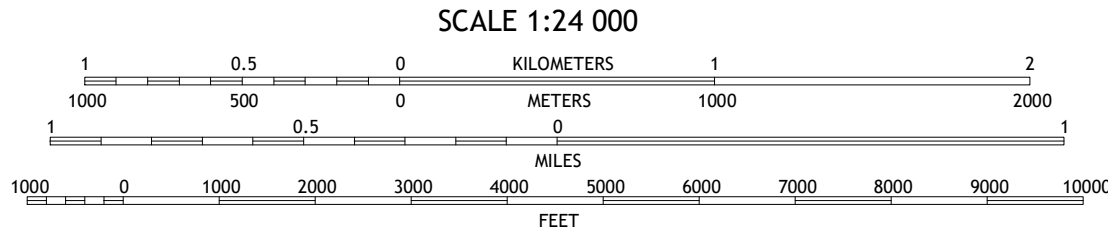
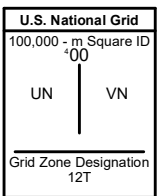
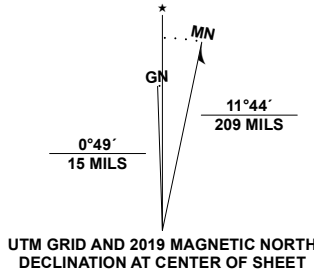
YANDELL SPRINGS QUADRANGLE
IDAHO
7.5-MINUTE SERIES



Produced by the United States Geological Survey

North American Datum of 1983 (NAD83)
World Geodetic System of 1984 (WGS84), Projection and
1 000-meter grid/Universal Transverse Mercator, Zone 12T
This map is not a legal document. Boundaries may be
generalized for this map scale. Private lands within government
reservations may not be shown. Obtain permission before
entering private lands.

Imagery.....NAIP, June 2017 - January 2018
Roads.....U.S. Census Bureau, 2016
Names.....GNIS, 1979 - 2020
Hydrography.....National Hydrography Dataset, 1899 - 2020
Contours.....National Elevation Dataset, 1999
Boundaries.....Multiple sources: see metadata file, 2017 - 2018
Public Land Survey System.....BLM, 2019
Wetlands.....FWS National Wetlands Inventory, 1980



CONTOUR INTERVAL 40 FEET
NORTH AMERICAN VERTICAL DATUM OF 1988
This map was produced to conform with the
National Geospatial Program US Topo Product Standard, 2011.
A metadata file associated with this product is draft version 0.6.18



1	2	3
4	5	6
7	8	9

- 1 Blackfoot
- 2 Lincoln Creek
- 3 Higham Peak
- 4 Buckskin Basin
- 5 Lincoln Peak
- 6 Moonlight Mountain
- 7 South Putnam Mountain
- 8 Jeff Cabin Creek

ROAD CLASSIFICATION		
Expressway	Local Connector	
Secondary Hwy	Local Road	
Ramp	4WD	
Interstate Route	US Route	State Route

YANDELL SPRINGS, ID
2020

