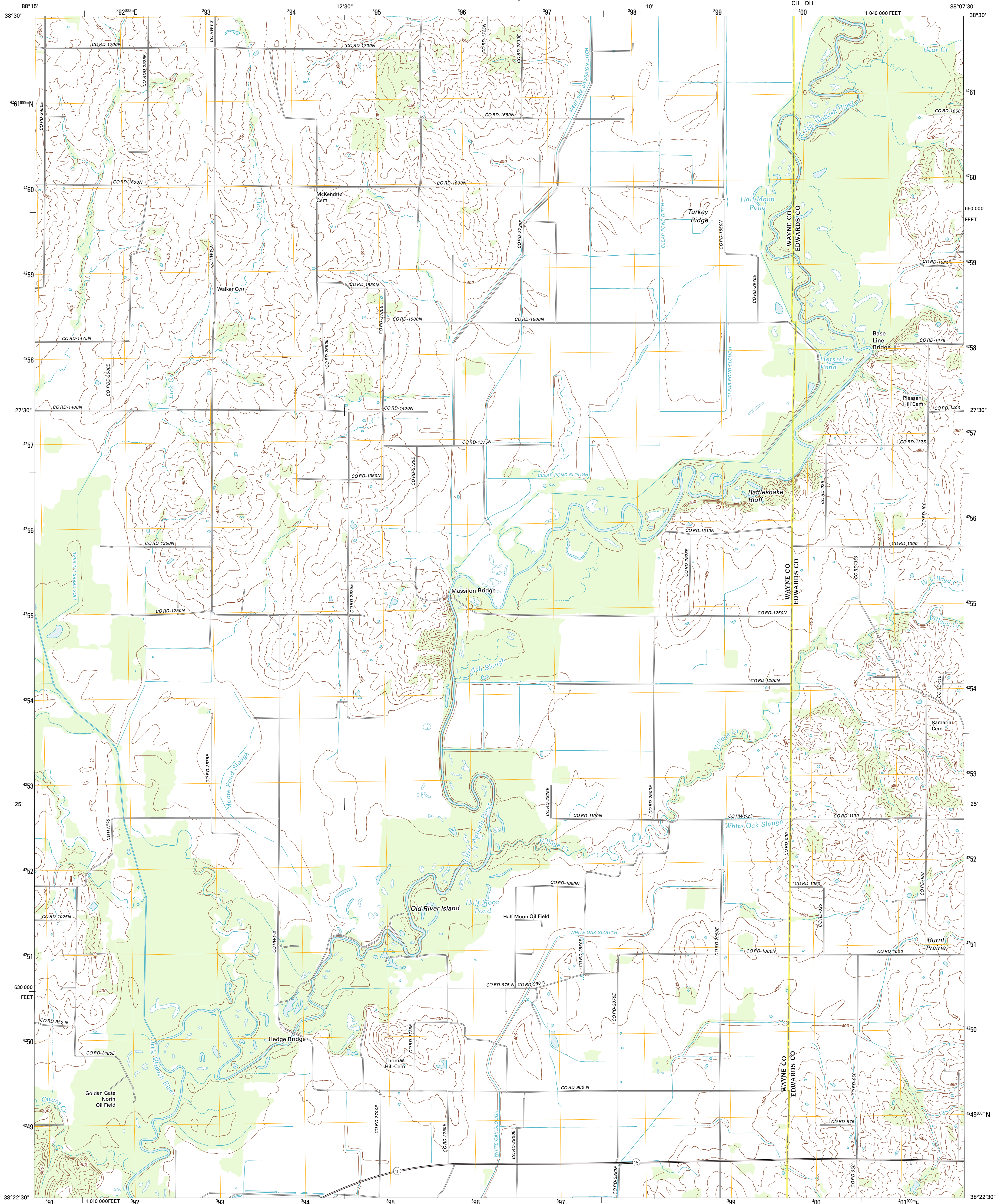




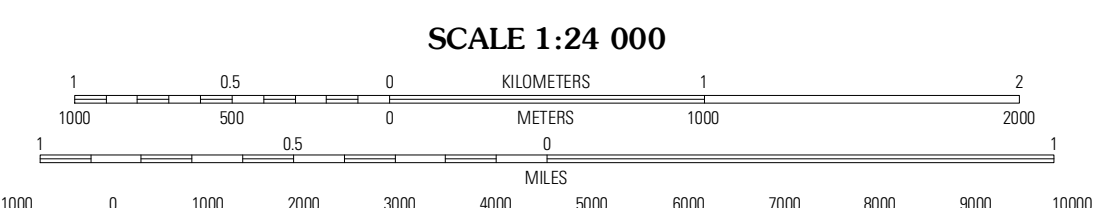
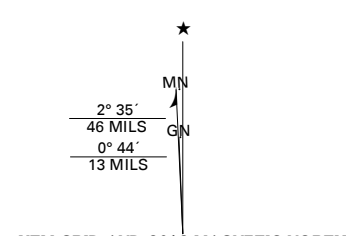
U.S. DEPARTMENT OF THE INTERIOR
U. S. GEOLOGICAL SURVEY



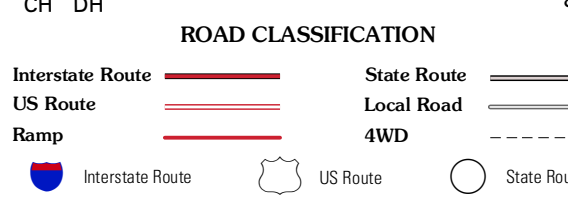
ALBION NW QUADRANGLE
ILLINOIS
7.5-MINUTE SERIES



Produced by the United States Geological Survey
North American Datum of 1983 (NAD83)
World Geodetic System of 1984 (WGS84). Projection and
1 000-meter grid: Universal Transverse Mercator, Zone 16S
10 000-foot ticks: Illinois Coordinate System of 1983 (east
zone)



CONTOUR INTERVAL 10 FEET
NORTH AMERICAN VERTICAL DATUM OF 1988
This map was produced to conform with the
National Geospatial Program US Topo Product Standard, 2011.
A metadata file associated with this product is draft version 0.6.3



Imagery:.....NAP, August 2011
Roads:.....©2006-2011 TomTom
Names:.....GNIS, 2011
Hydrography:.....National Hydrography Dataset, 2011
Contours:.....National Elevation Dataset, 2008
Boundaries:.....Cemsa, IBC, USGS, 1972 - 2010

U.S. National Grid
100,000-m Square ID
150
CH DH
Grid Zone Designation
16S

Enterprise	Mount Erie	West Salem
Fairfield	Albion NW	Albion North
Burnt Prairie	Golden Gate	Albion South

ALBION NW, IL
2012

ADJOINING 7.5 QUADRANGLES