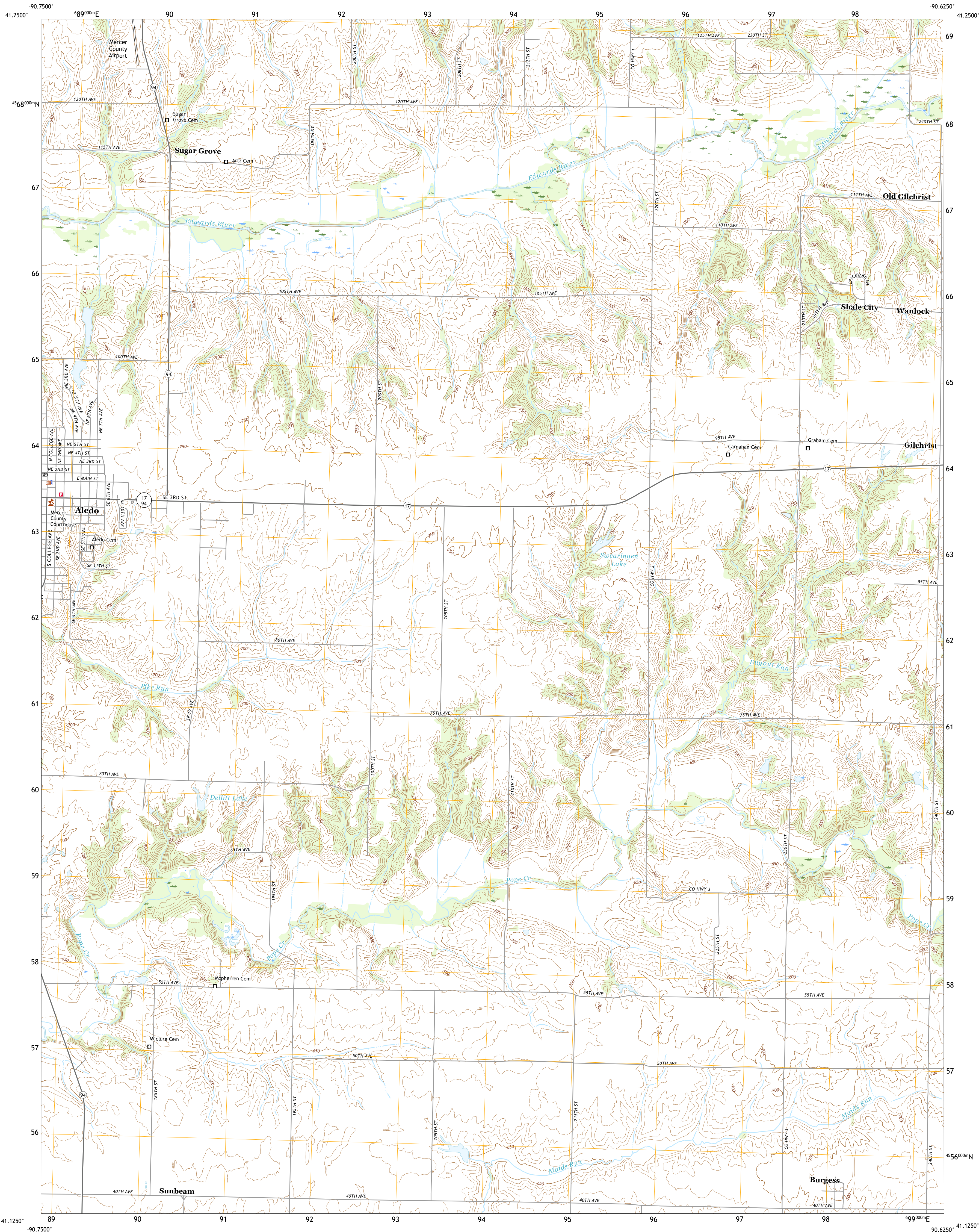




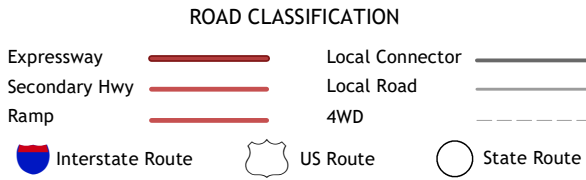
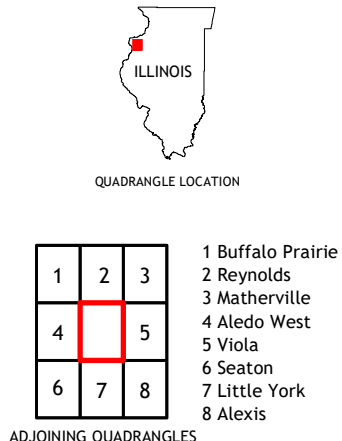
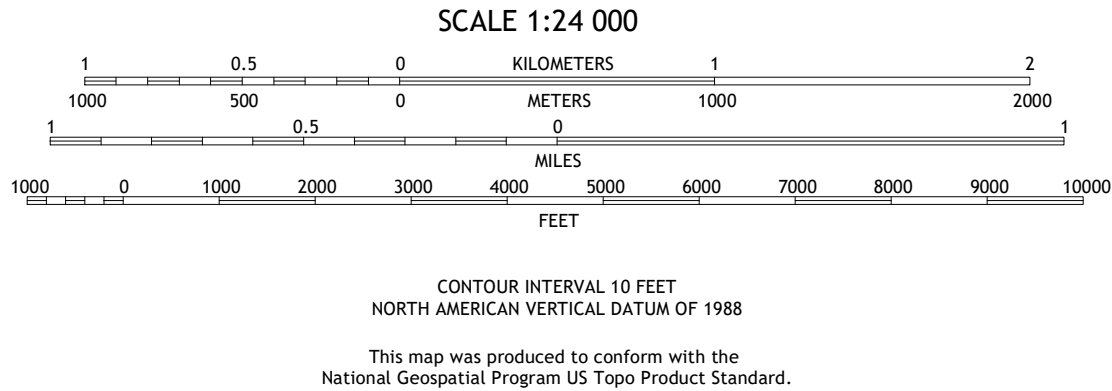
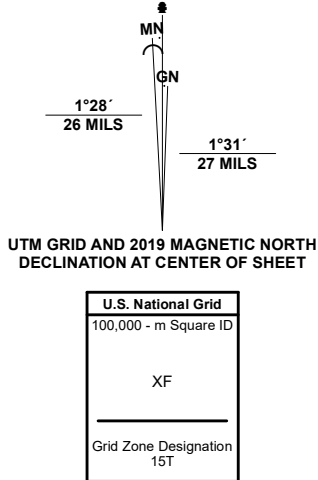
U.S. DEPARTMENT OF THE INTERIOR
U.S. GEOLOGICAL SURVEY



ALEDO EAST QUADRANGLE
ILLINOIS - MERCER COUNTY
7.5-MINUTE SERIES



Produced by the United States Geological Survey
North American Datum of 1983 (NAD83)
World Geodetic System of 1984 (WGS84). Projection and
1 000-meter grid/Universal Transverse Mercator, Zone 15T
This map is not a legal document. Boundaries may be
generalized for this map scale. Private lands within government
reservations may not be shown. Obtain permission before
entering private lands.
Imagery.....NAIP, August 2019 - August 2019
Roads.....U.S. Census Bureau, 2017
Names.....GNIS, 1980 - 2020
Hydrography.....National Hydrography Dataset, 2006 - 2018
Contours.....National Elevation Dataset, 2016
Boundaries.....Multiple sources: see metadata file, 2018 - 2019
Public Land Survey System.....BLM, 2020
Wetlands.....FWS National Wetlands Inventory Not Available



ALEDO EAST, IL
2021

