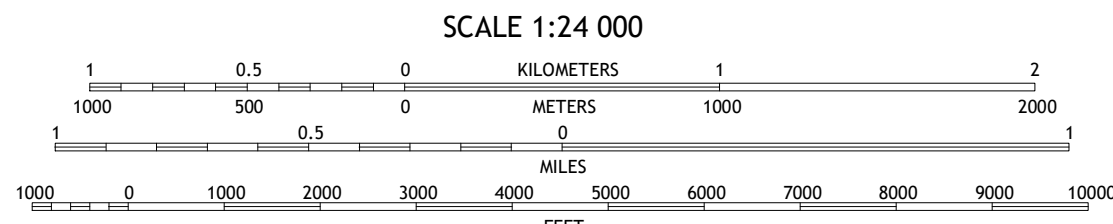
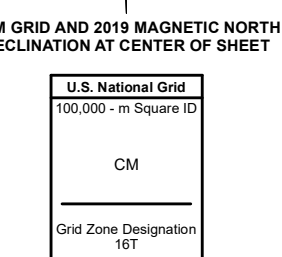
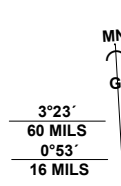


Produced by the United States Geological Survey

North American Datum of 1983 (NAD83)
World Geodetic System of 1984 (WGS84) - Projection and
1 000-meter grid/Universal Transverse Mercator, Zone 16T
This map is not a legal document. Boundaries may be
generalized for this map scale. Private lands within government
reservations may not be shown. Obtain permission before
entering private lands.

Imagery.....NAIP, September 2019 - September 2019
Roads.....U.S. Census Bureau, 2017
Names.....GNIS, 1980 - 2021
Hydrography.....National Hydrography Dataset, 2002 - 2018
Contours.....National Elevation Dataset, 2015
Boundaries.....Multiple sources; see metadata file 2018 - 2019
Public Land Survey System.....BLM, 2020
Wetlands.....FWS National Wetlands Inventory Not Available



SCALE 1:24 000
CONTOUR INTERVAL 10 FEET
NORTH AMERICAN VERTICAL DATUM OF 1988
This map was produced to conform with the
National Geospatial Program US Topo Product Standard.



1	2	3
4	5	6
7	8	9

ADJOINING QUADRANGLES

1 Elburn
2 Geneva
3 West Chicago
4 Sago Grove
5 Naperville
6 Yorkville
7 Aurora South
8 Normaltown

