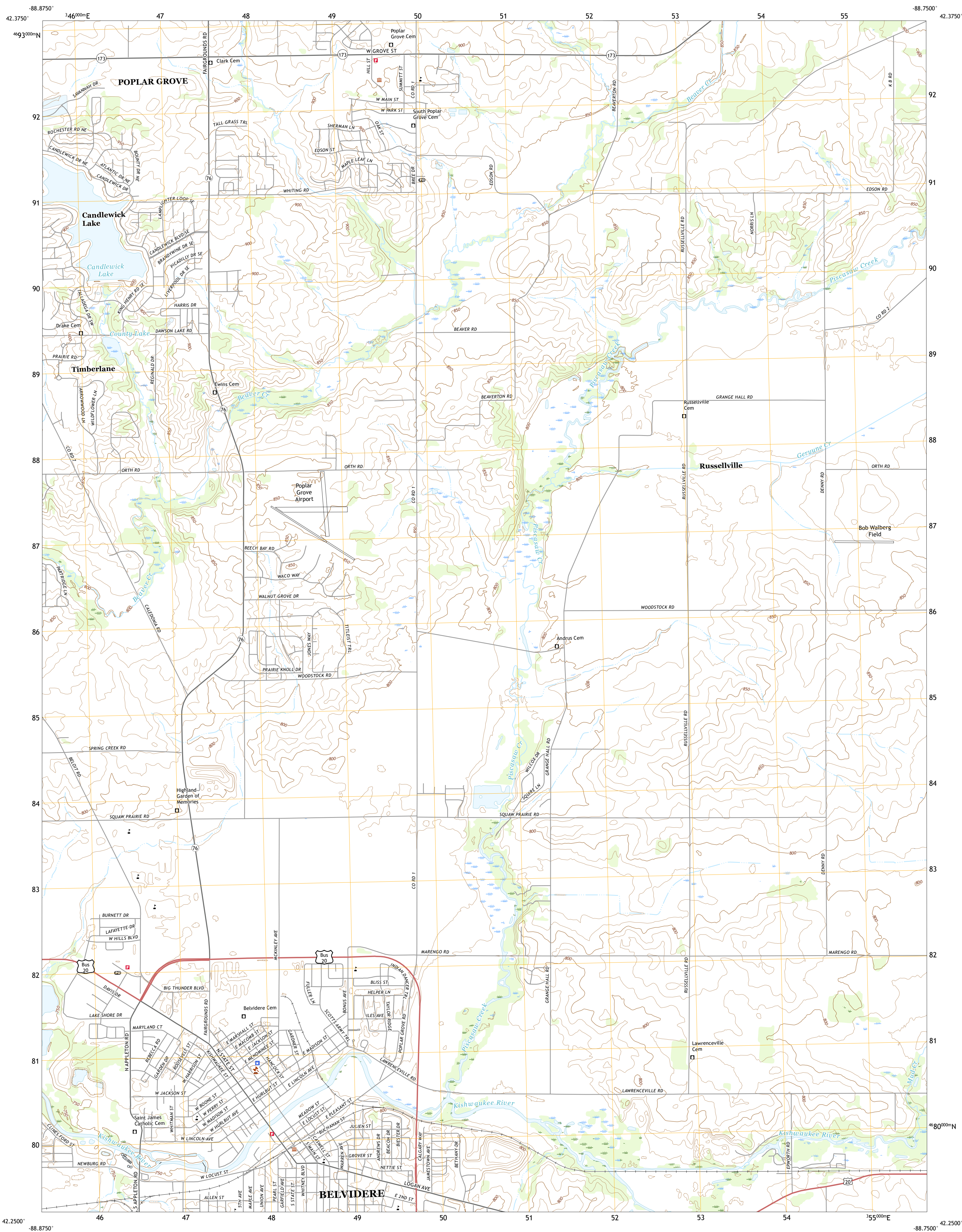




U.S. DEPARTMENT OF THE INTERIOR
U.S. GEOLOGICAL SURVEY

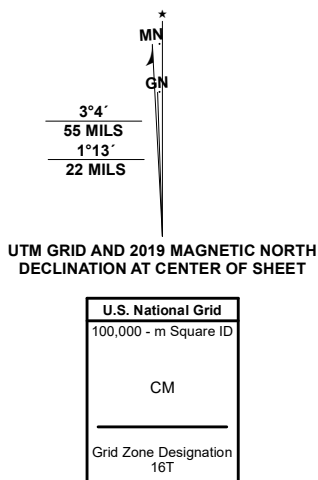


BELVIDERE NORTH QUADRANGLE
ILLINOIS - BOONE COUNTY
7.5-MINUTE SERIES



Produced by the United States Geological Survey

North American Datum of 1983 (NAD83)
World Geodetic System of 1984 (WGS84) - Projection and
1 000-meter grid/Universal Transverse Mercator, Zone 16T
This map is not a legal document. Boundaries may be
generalized for this map scale. Private lands within government
reservations may not be shown. Obtain permission before
entering private lands.
Imagery.....NAIP, August 2019 - August 2019
Roads.....U.S. Census Bureau, 2017
Names.....GNIS, 1980 - 2020
Hydrography.....National Hydrography Dataset, 2002 - 2018
Contours.....National Elevation Dataset, 2020
Boundaries.....Multiple sources: see metadata file, 2018 - 2019
Public Land Survey System.....BLM, 2020
Wetlands.....FWS National Wetlands Inventory Not Available



CONTOUR INTERVAL 10 FEET
NORTH AMERICAN VERTICAL DATUM OF 1988
This map was produced to conform with the
National Geospatial Program US Topo Product Standard.



1	2	3
4	5	6
7	8	9

1 Belvidere NW
2 Belvidere NE
3 Capron
4 Caledonia
5 Garden Prairie
6 Cherry Valley
7 Belvidere South
8 Riley

ROAD CLASSIFICATION
Expressway
Secondary Hwy
Ramp
Interstate Route
Local Connector
Local Road
4WD
US Route
State Route

BELVIDERE NORTH, IL

2021



NSN 1643016365017
NSA REF NO. USGS X 2 4 K 3 2 7 3