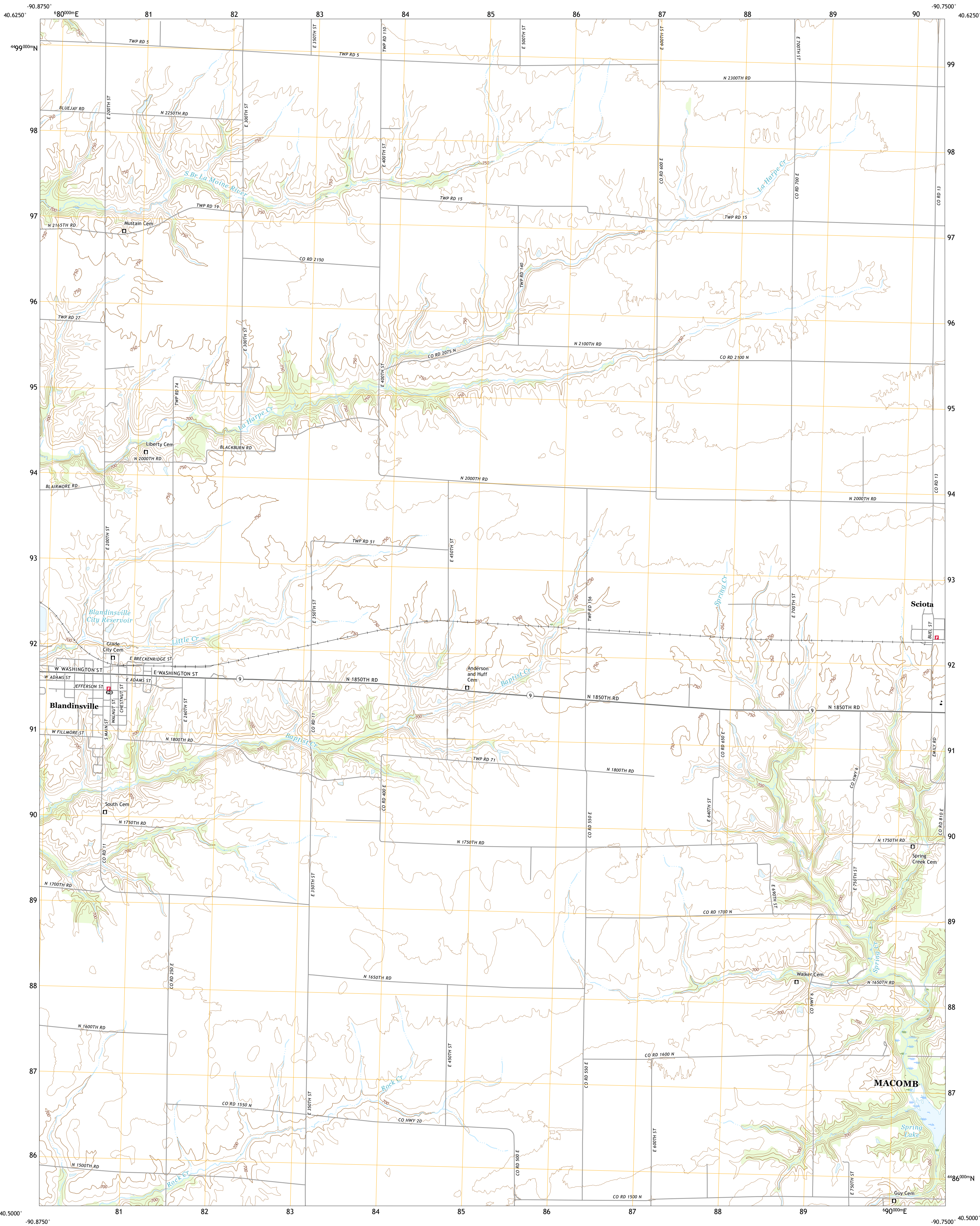




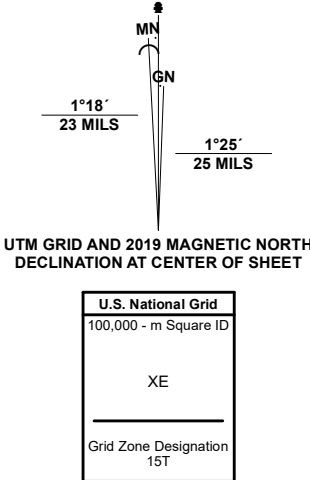
U.S. DEPARTMENT OF THE INTERIOR  
U.S. GEOLOGICAL SURVEY



BLANDINSVILLE QUADRANGLE  
ILLINOIS - MCDONOUGH COUNTY  
7.5-MINUTE SERIES



Produced by the United States Geological Survey  
North American Datum of 1983 (NAD83)  
World Geodetic System of 1984 (WGS84). Projection and  
1 000-meter grid/Universal Transverse Mercator, Zone 17T  
This map is not a legal document. Boundaries may be  
generalized for this map scale. Private lands within government  
reservations may not be shown. Obtain permission before  
entering private lands.  
Imagery.....NAIP, August 2019 - August 2019  
Roads.....U.S. Census Bureau, 2017  
Names.....GNIS, 1980-2020  
Hydrography.....National Hydrography Dataset, 2006 - 2019  
Contours.....National Elevation Dataset, 2018  
Boundaries.....Multiple sources: see metadata file, 2018 - 2019  
Public Land Survey System.....BLM, 2020  
Wetlands.....FWS National Wetlands Inventory Not Available



CONTOUR INTERVAL 10 FEET  
NORTH AMERICAN VERTICAL DATUM OF 1988  
This map was produced to conform with the  
National Geospatial Program US Topo Product Standard.



1	2	3
4	5	6
7	8	9

ADJOINING QUADRANGLES

1 Stronghurst  
2 Raritan  
3 Roseville  
4 La Harpe  
5 Good Hope  
6 Fountain Green  
7 Colchester  
8 Macomb

ROAD CLASSIFICATION	
Expressway	Local Connector
Secondary Hwy	Local Road
Ramp	4WD
Interstate Route	US Route
	State Route

BLANDINSVILLE, IL  
2021

