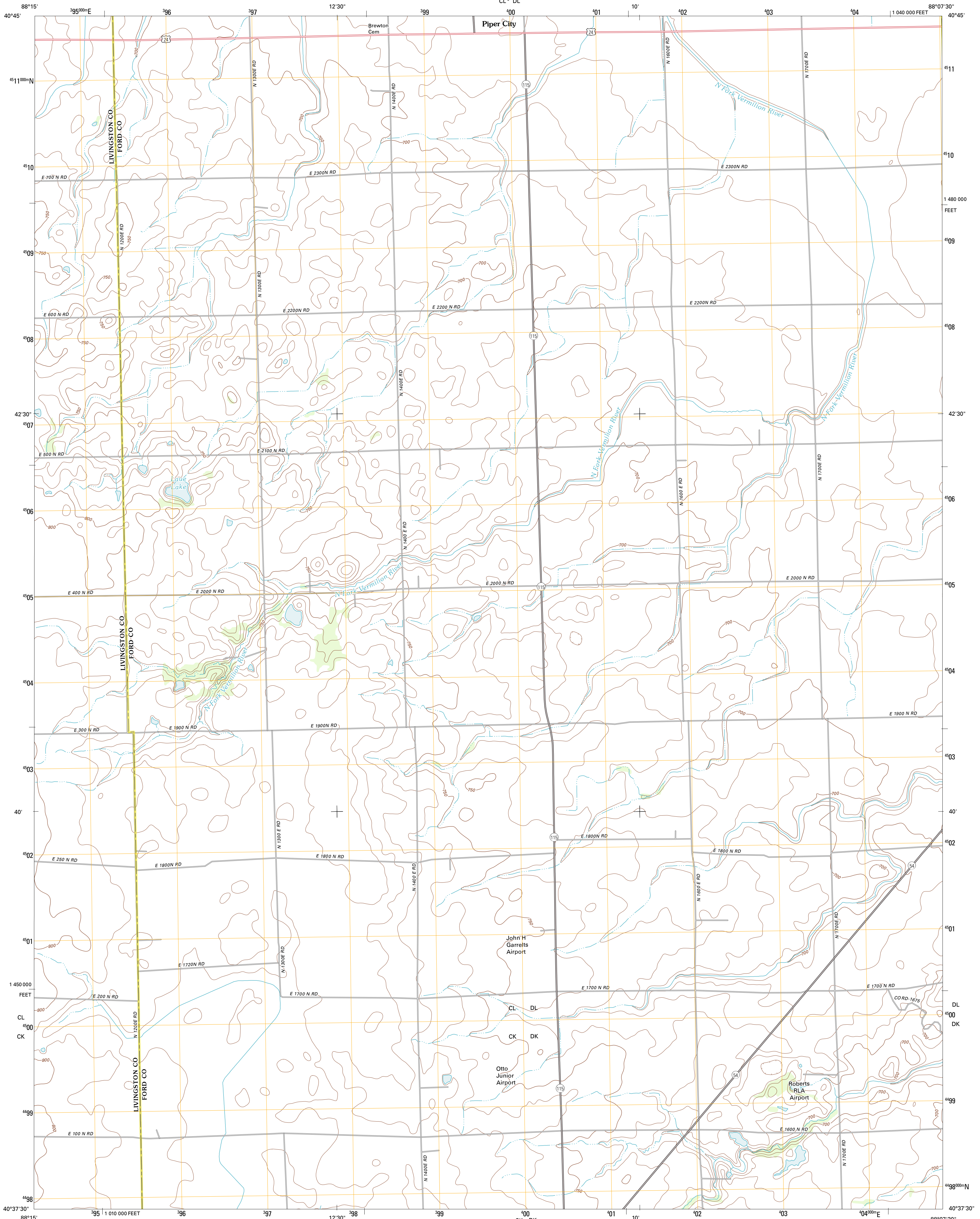




U.S. DEPARTMENT OF THE INTERIOR
U. S. GEOLOGICAL SURVEY

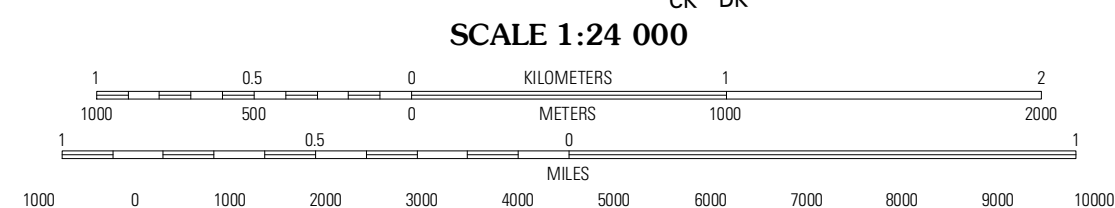
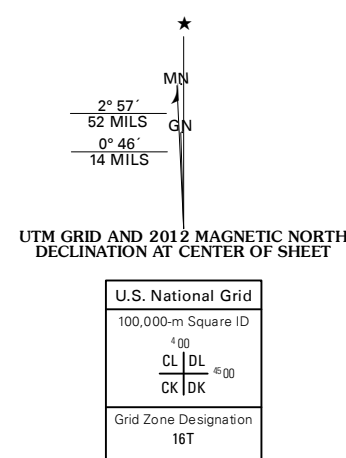


BUCKLEY NW QUADRANGLE
ILLINOIS
7.5-MINUTE SERIES



Produced by the United States Geological Survey
North American Datum of 1983 (NAD83)
World Geodetic System of 1984 (WGS84) Projection and
1 000-meter grid: Universal Transverse Mercator, Zone 16T
10 000-foot ticks: Illinois Coordinate System of 1983 (east zone)

Imagery: N/AIP, August 2011
Roads: ©2006-2011 TomTom
Names: ©2006-2011 GNS, 2011
Hydrography: National Hydrography Dataset, 2011
Contours: National Elevation Dataset, 2008
Boundaries: Census, IBWC, IBC, USGS, 1972-2010



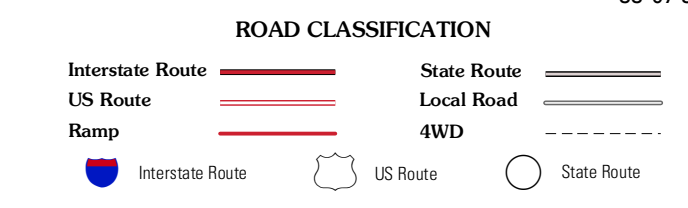
CONTOUR INTERVAL 10 FEET
NORTH AMERICAN VERTICAL DATUM OF 1988

This map was produced to conform with the
National Geospatial Program US Topo Product Standard, 2011.
A metadata file associated with this product is draft version 0.6.3



QUADRANGLE LOCATION

Chatsworth North	Piper City	La Hogue
Chatsworth South	Buckley NW	Onarga West
Melvin West	Melvin East	Buckley



BUCKLEY NW, IL
2012

ADJOINING 7.5' QUADRANGLES