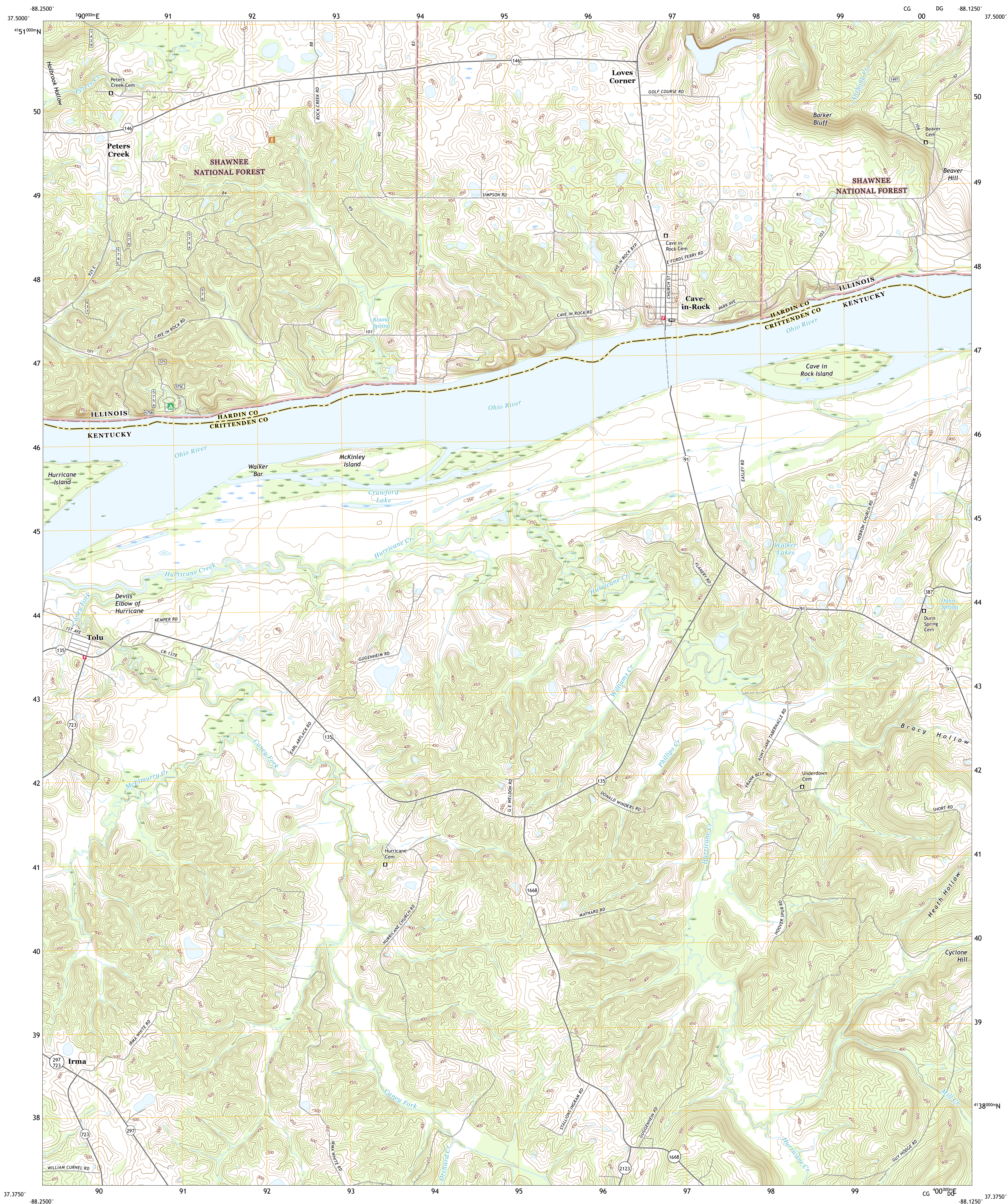


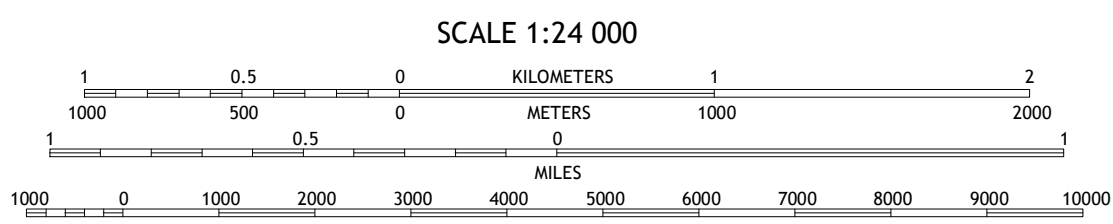
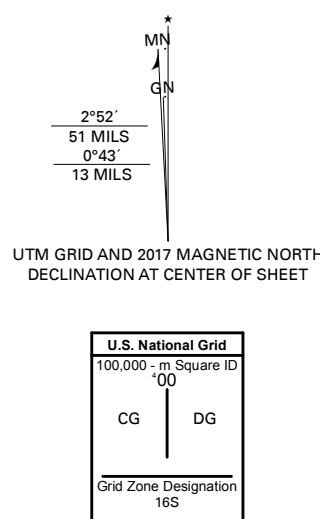


CAVE-IN-ROCK QUADRANGLE
ILLINOIS - KENTUCKY
7.5-MINUTE SERIES



World Geodetic System of 1984 (WGS84). Projection and 1 000-meter grid: Universal Transverse Mercator, Zone 16S
This map is not a legal document. Boundaries may be generalized for this map scale. Private lands within government reservations may not be shown. Obtain permission before entering private lands.

Imagery.....	NALIP, August 2015 - September 2016
Roads.....	U.S. Census Bureau, 2015
Roads within US Forest Service Lands.....	FSTops Database, 2017
.....	with limited Forest Service updates, 2017
Names.....	GNIS, 1979 - 2017
Hydrography.....	National Hydrography Dataset, 2002 - 2017
Contours.....	National Elevation Dataset, 2002
Boundaries.....	Multiple sources; see metadata file
Public Land Survey System.....	BLM, 1982 - 2017
Wetlands.....	FWS National Wetlands Inventory 1982 - 1983



CONTOUR INTERVAL 10 FEET
NORTH AMERICAN VERTICAL DATUM OF 1988

This map was produced to conform with the
National Geospatial Program US Topo Product Standard, 2011.
A metadata file associated with this product is draft version 0.6.18



1	2	3
4		5
6	7	8

- 1 Karbers Ridge
- 2 Saline Mines
- 3 Dekoven
- 4 Rosiclare
- 5 Repton
- 6 Lola
- 7 Salem
- 8 Marion

ROAD CLASSIFICATION

<p>Expressway </p> <p>Secondary Hwy </p> <p>Ramp </p>	<p>Local Connector </p> <p>Local Road </p> <p>4WD </p>
<p> Interstate Route</p> <p> FS Primary Route</p>	<p> US Route</p> <p> FS Passenger Route</p>
	<p> State Route</p> <p> FS High Clearance Route</p>

CAVE-IN-ROCK, IL, KY
2018

