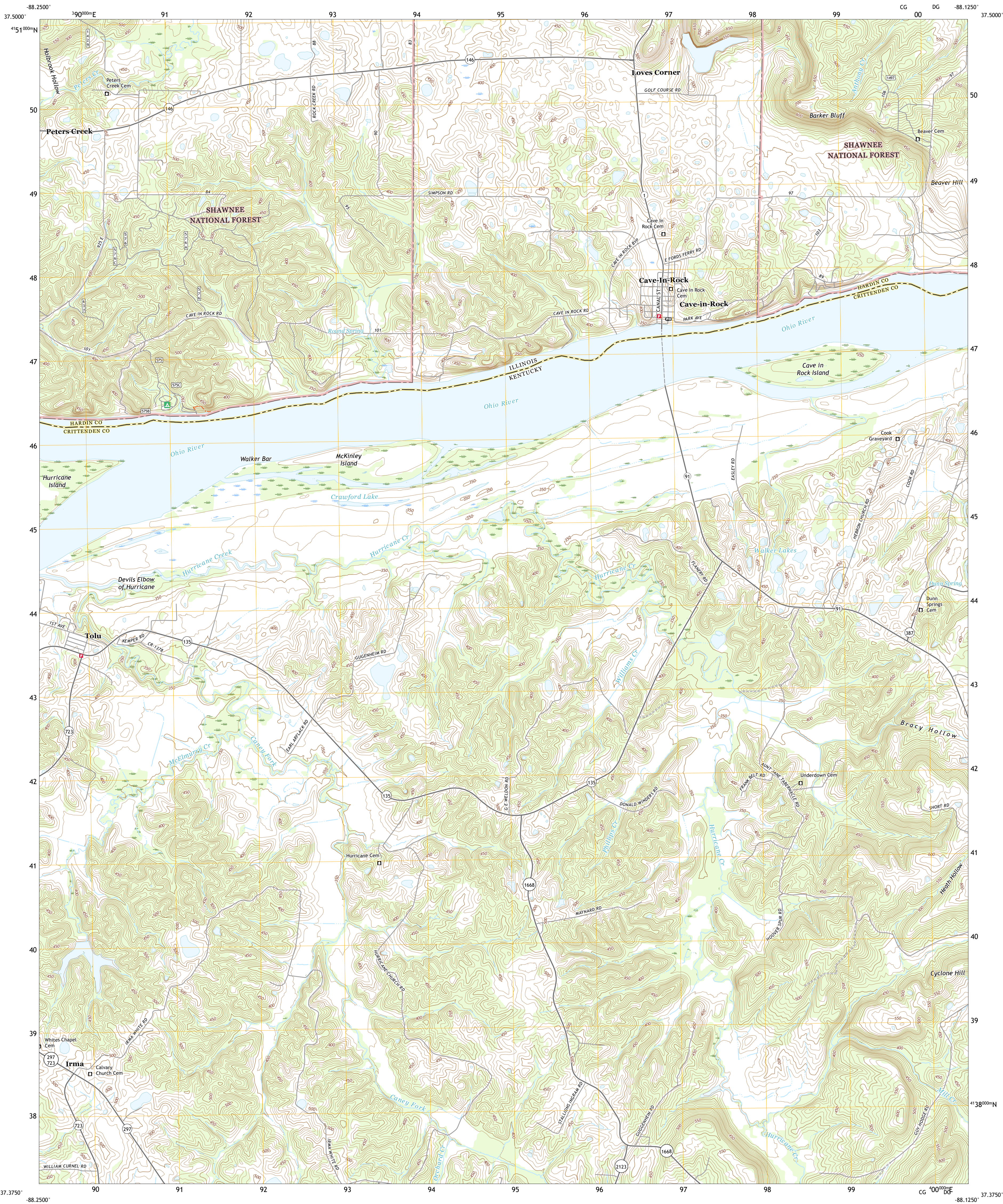




U.S. DEPARTMENT OF THE INTERIOR
U.S. GEOLOGICAL SURVEY



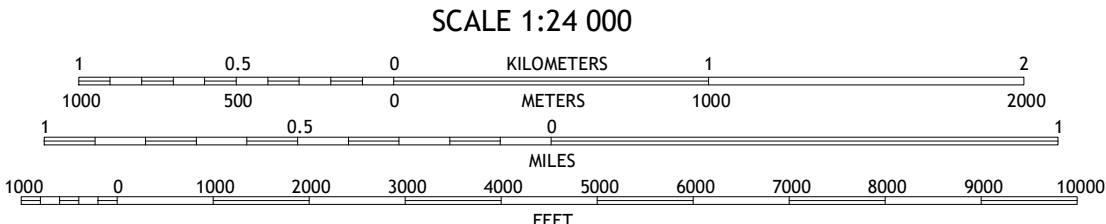
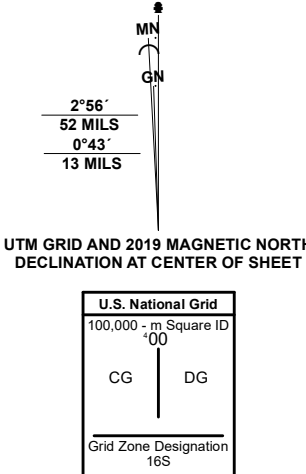
CAVE-IN-ROCK QUADRANGLE
ILLINOIS - KENTUCKY
7.5-MINUTE SERIES



Produced by the United States Geological Survey

North American Datum of 1983 (NAD83)
World Geodetic System of 1984 (WGS84). Projection and
1 000-meter grid/Universal Transverse Mercator, Zone 16S
This map is not a legal document. Boundaries may be
generalized for this map scale. Private lands within government
reservations may not be shown. Obtain permission before
entering private lands.

Imagery.....NAIP, September 2019 - August 2020
Roads.....U.S. Census Bureau, 2015 - 2017
Roads within US Forest Service Lands.....FS Topo Data
with limited Forest Service updates, 2013 - 2017
Names.....National Hydrography Dataset, 2002 - 2020
Hydrography.....National Hydrography Dataset, 2002 - 2020
Contours.....National Elevation Dataset, 2002
Boundaries.....Multiple sources; see metadata file 2017, 2019
Public Land Survey System.....BLM, 2020
Wetlands.....FWS National Wetlands Inventory 1982 - 1983



CONTOUR INTERVAL 10 FEET
NORTH AMERICAN VERTICAL DATUM OF 1988
This map was produced to conform with the
National Geospatial Program US Topo Product Standard.



1	2	3
4	5	6
7	8	9

1 Karbers Ridge
2 Saline Mines
3 Dekoven
4 Rosiclar
5 Repton
6 Lola
7 Salem
8 Marion

ROAD CLASSIFICATION	
Expressway	Local Connector
Secondary Hwy	Local Road
Ramp	4WD
Interstate Route	US Route
FS Primary Route	FS Passenger Route
	FS High Clearance Route

Check with local Forest Service unit
for current travel conditions and restrictions.

CAVE-IN-ROCK, IL, KY
2021

