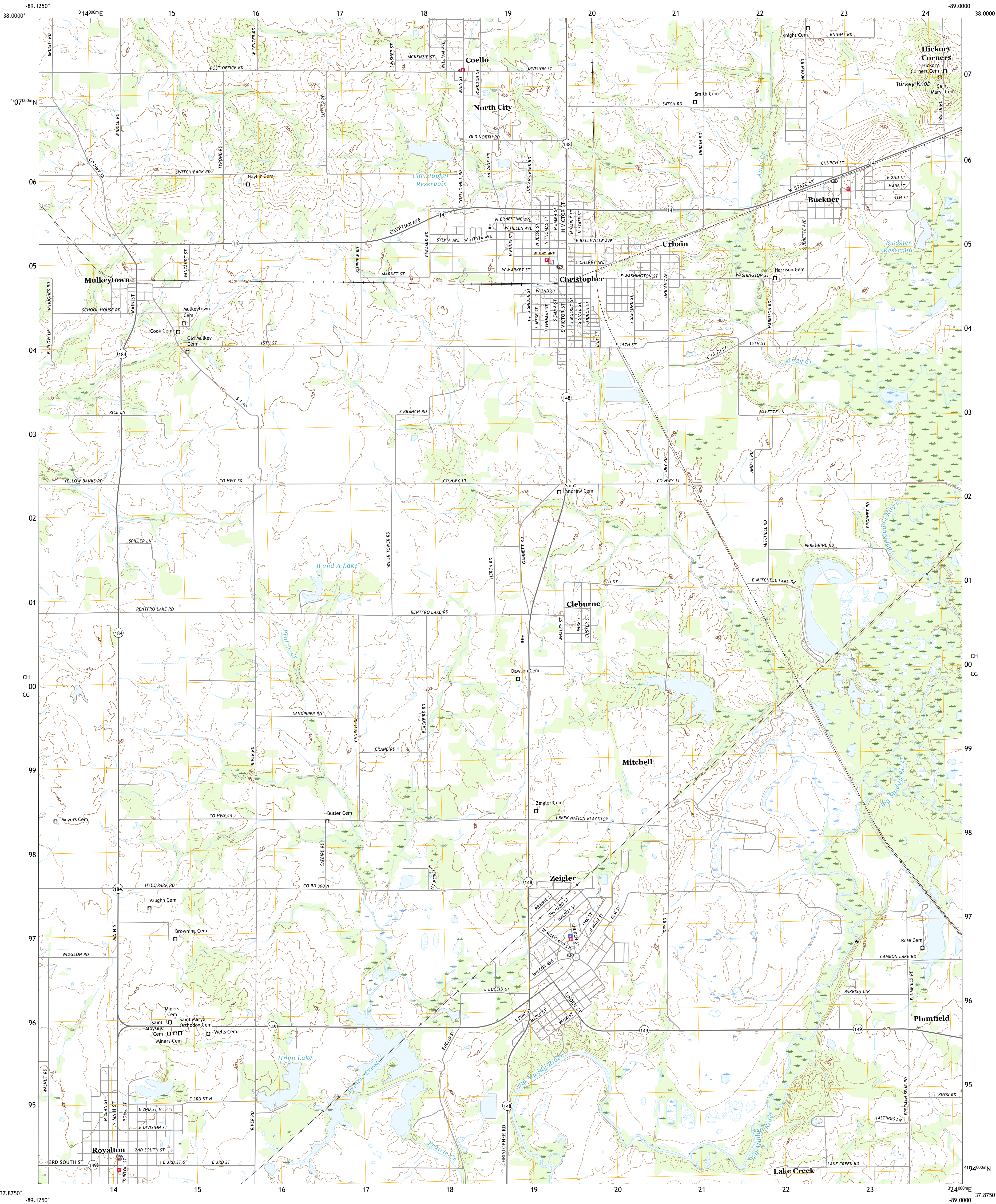




U.S. DEPARTMENT OF THE INTERIOR
U.S. GEOLOGICAL SURVEY

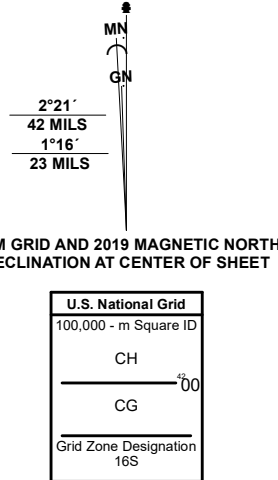


CHRISTOPHER QUADRANGLE
ILLINOIS - FRANKLIN COUNTY
7.5-MINUTE SERIES

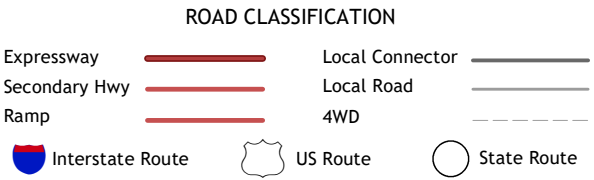
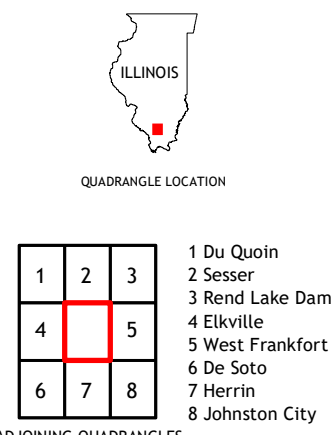


Produced by the United States Geological Survey
North American Datum of 1983 (NAD83)
World Geodetic System of 1984 (WGS84) - Projection and
1 000-meter grid/Universal Transverse Mercator, Zone 16S
This map is not a legal document. Boundaries within government
reservations may not be shown. Obtain permission before
entering private lands.

Imagery.....NAIP, September 2019 - September 2019
Roads.....U.S. Census Bureau, 2017
Names.....GNIS, 1980 - 2020
Hydrography.....National Hydrography Dataset, 2002 - 2019
Contours.....National Elevation Dataset, 2018
Boundaries.....Multiple sources: see metadata file 2018 - 2019
Public Land Survey System.....BLM, 2020
Wetlands.....FWS National Wetlands Inventory Not Available



CONTOUR INTERVAL 10 FEET
NORTH AMERICAN VERTICAL DATUM OF 1988
This map was produced to conform with the
National Geospatial Program US Topo Product Standard.



1	2	3
4	5	6
7	8	9

ADJOINING QUADRANGLES

1 Du Quoin
2 Sesser
3 Rend Lake Dam
4 Elvinsville
5 West Frankfort
6 De Soto
7 Herrin
8 Johnston City

CHRISTOPHER, IL
2021

