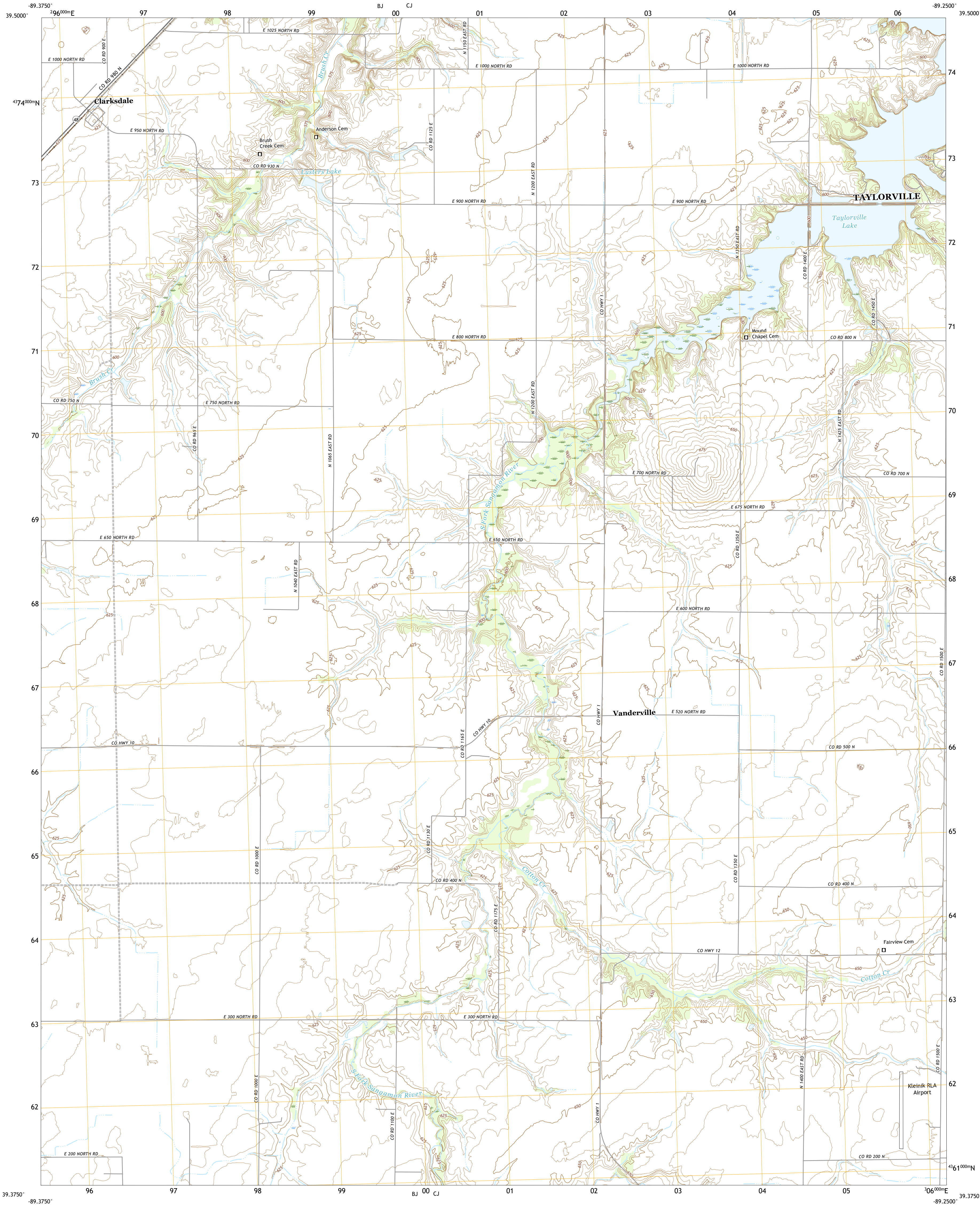




U.S. DEPARTMENT OF THE INTERIOR  
U.S. GEOLOGICAL SURVEY

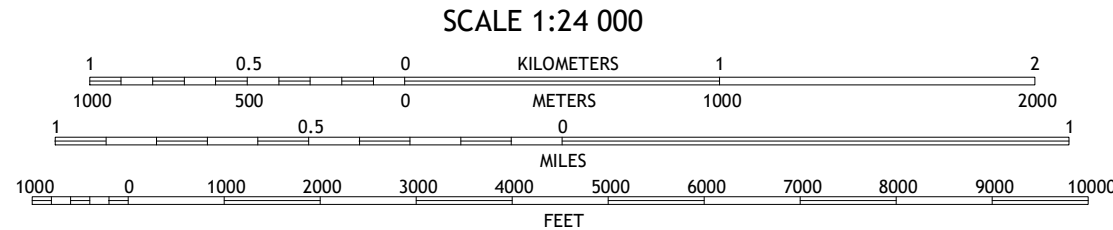
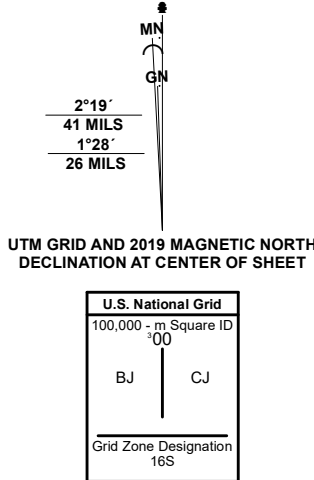


CLARKSDALE QUADRANGLE  
ILLINOIS - CHRISTIAN COUNTY  
7.5-MINUTE SERIES



Produced by the United States Geological Survey

North American Datum of 1983 (NAD83)  
World Geodetic System of 1984 (WGS84), Projection and  
1 000-meter grid/Universal Transverse Mercator, Zone 16S  
This map is not a legal document. Boundaries may be  
generalized for this map scale. Private lands within government  
reservations may not be shown. Obtain permission before  
entering private lands.  
Imagery.....NAIP, July 2019 - July 2019  
Roads.....U.S. Census Bureau, 2017  
Names.....GNIS, 1980-2020  
Hydrography.....National Hydrography Dataset, 2004-2018  
Contours.....National Elevation Dataset, 2016  
Boundaries.....Multiple sources: see metadata file, 2018-2019  
Public Land Survey System.....BLM, 2020  
Wetlands.....FWS National Wetlands Inventory, Not Available



CONTOUR INTERVAL 5 FEET  
NORTH AMERICAN VERTICAL DATUM OF 1988  
This map was produced to conform with the  
National Geospatial Program US Topo Product Standard.



1	2	3
4	5	6
7	8	9

1 Kincaid  
2 Taylorville  
3 Willeville  
4 Morrisville  
5 Owanecko  
6 Nokomis SW  
7 Nokomis  
8 Ohlman

ROAD CLASSIFICATION  
Expressway  
Secondary Hwy  
Ramp  
Local Connector  
Local Road  
4WD  
US Route  
State Route

CLARKSDALE, IL  
2021



NSN 7540-01-603-0163  
USGS X 2.4 K 8 9 3 6