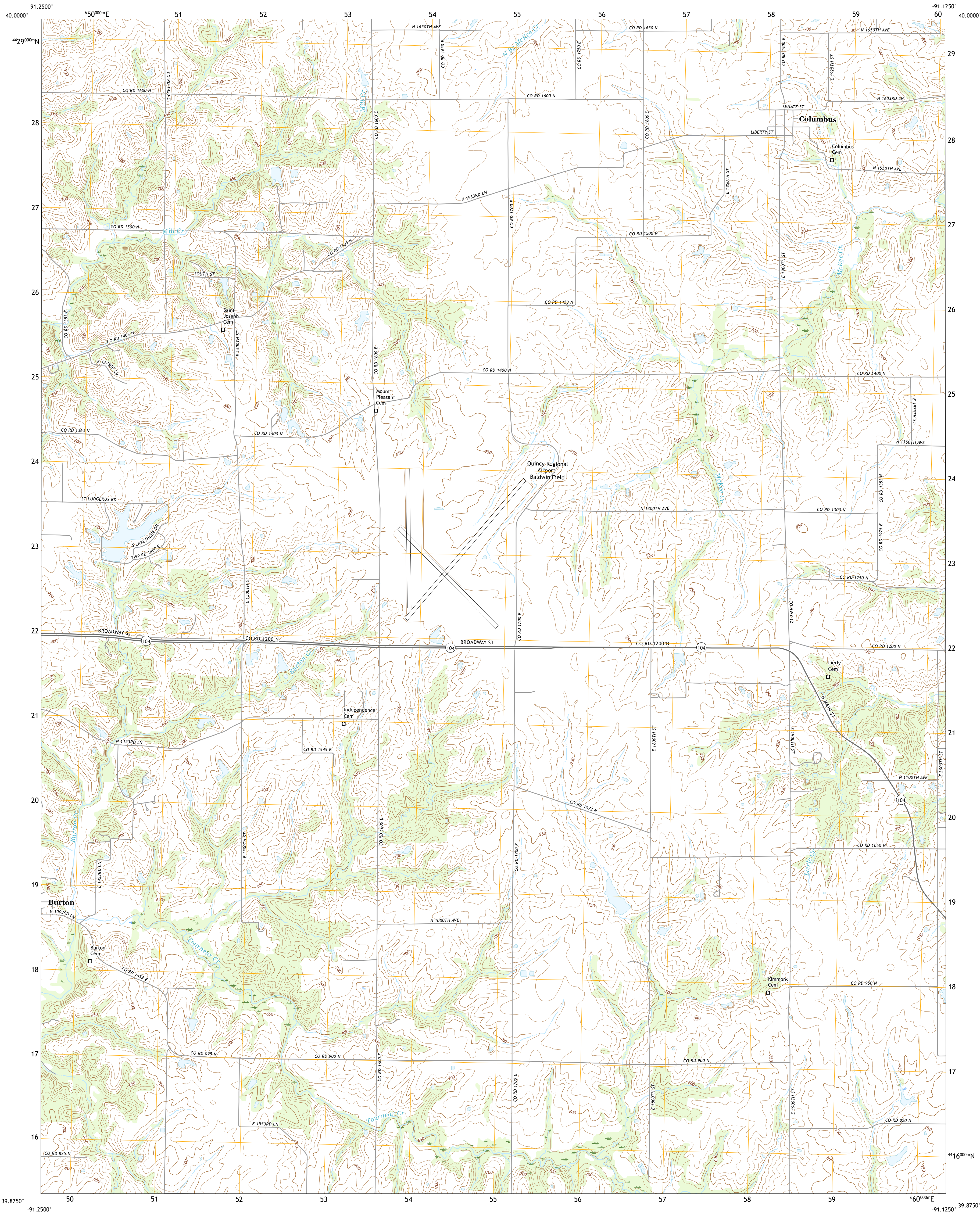




U.S. DEPARTMENT OF THE INTERIOR  
U.S. GEOLOGICAL SURVEY



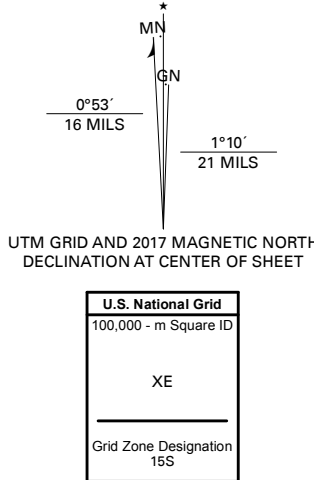
COLUMBUS QUADRANGLE  
ILLINOIS - ADAMS COUNTY  
7.5-MINUTE SERIES



Produced by the United States Geological Survey

North American Datum of 1983 (NAD83)  
World Geodetic System of 1984 (WGS84). Projection and  
1 000-meter grid/Universal Transverse Mercator, Zone 15S  
This map is not a legal document. Boundaries may be  
generalized for this map scale. Private lands within government  
reservations may not be shown. Obtain permission before  
entering private lands.

Imagery.....NAIP, August 2015 - October 2015  
Roads.....U.S. Census Bureau, 2017  
Names.....GNIS, 1996, 2017  
Hydrography.....National Hydrography Dataset, 2005 - 2011  
Contours.....National Elevation Dataset, 1999 - 2012  
Boundaries.....Multiple sources: see metadata file, 2014, 2016  
Public Land Survey System.....BLM, 2017  
Wetlands.....FWS National Wetlands Inventory 1983 - 1985



CONTOUR INTERVAL 10 FEET  
NORTH AMERICAN VERTICAL DATUM OF 1988  
This map was produced to conform with the  
National Geospatial Program US Topo Product Standard, 2011.  
A metadata file associated with this product is draft version 0.6.18



1	2	3
4	5	6
7	8	9

ADJOINING QUADRANGLES

- 1 Mendon
- 2 Coatsburg
- 3 Camp Point
- 4 Quincy East
- 5 Liberty
- 6 Marblehead
- 7 Payson
- 8 Richfield

ROAD CLASSIFICATION		
Expressway	Local Connector	
Secondary Hwy	Local Road	
Ramp	4WD	
Interstate Route	US Route	State Route

COLUMBUS, IL  
2018



NSN 7540-01-603-0163 6514 6  
NSA REF NO. USGS X 2 4 K 9 7 0 7