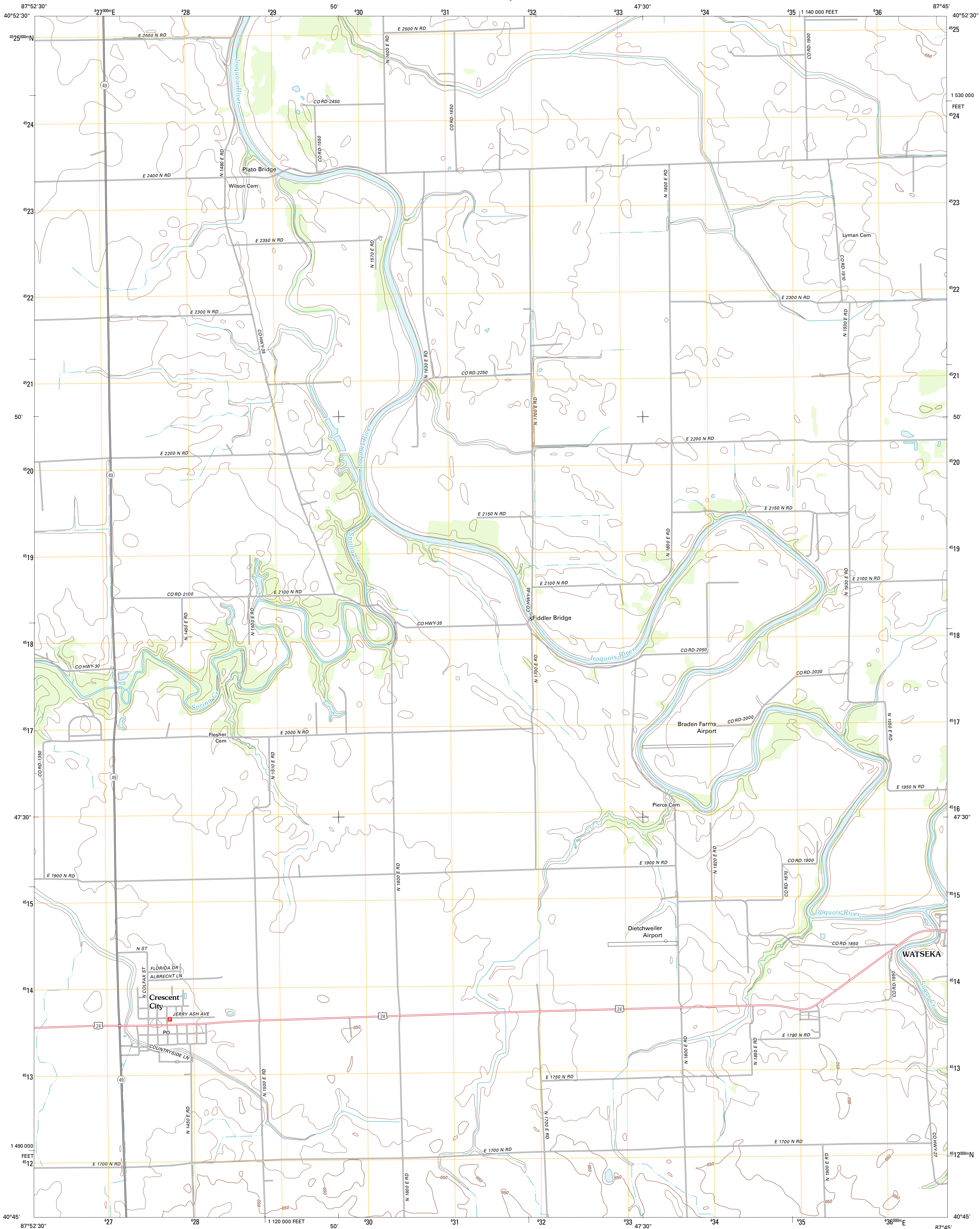




U.S. DEPARTMENT OF THE INTERIOR  
U. S. GEOLOGICAL SURVEY



CRESCENT CITY QUADRANGLE  
ILLINOIS-IROQUOIS CO.  
7.5-MINUTE SERIES

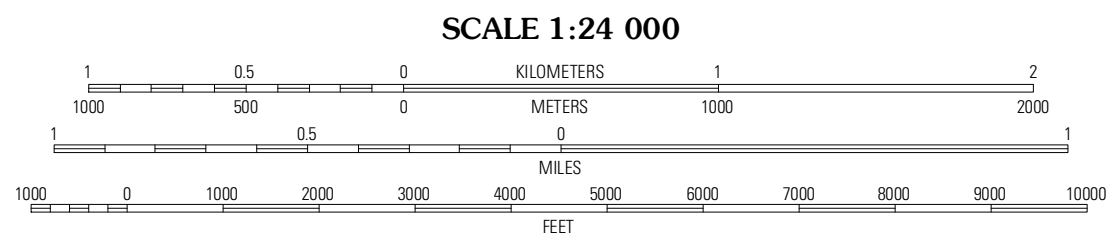


Produced by the United States Geological Survey  
North American Datum of 1983 (NAD83)  
World Geodetic System of 1984 (WGS84). Projection and  
1 000-meter grid: Universal Transverse Mercator, Zone 16T  
10 000-foot ticks: Illinois Coordinate System of 1983 (east  
zone)

Imagery.....NAIP, August 2011  
Roads.....©2006-2011 TomTom  
Names.....GNIS, 2011  
Hydrography.....National Hydrography Dataset, 2011  
Contours.....National Elevation Dataset, 2012  
Boundaries.....Census, IBWC, IBC, USGS, 1972 - 2010

UTM GRID AND 2012 MAGNETIC NORTH  
DECLINATION AT CENTER OF SHEET

U.S. National Grid 100,000-m Square ID
DL
Grid Zone Designation 16T



CONTOUR INTERVAL 10 FEET  
NORTH AMERICAN VERTICAL DATUM OF 1988  
This map was produced to conform with the  
National Geospatial Program US Topo Product Standard, 2011.  
A metadata file associated with this product is draft version 0.6.3



Clifton	L'Enble	Beaverville
Gilman	Crescent City	Watseka
Owaga East	Woodworth	Milford

ADJOINING 7.5' QUADRANGLES

ROAD CLASSIFICATION		
Interstate Route	State Route	Local Road
US Route	4WD	
Ramp		
Interstate Route	US Route	State Route

CRESCENT CITY, IL  
2012