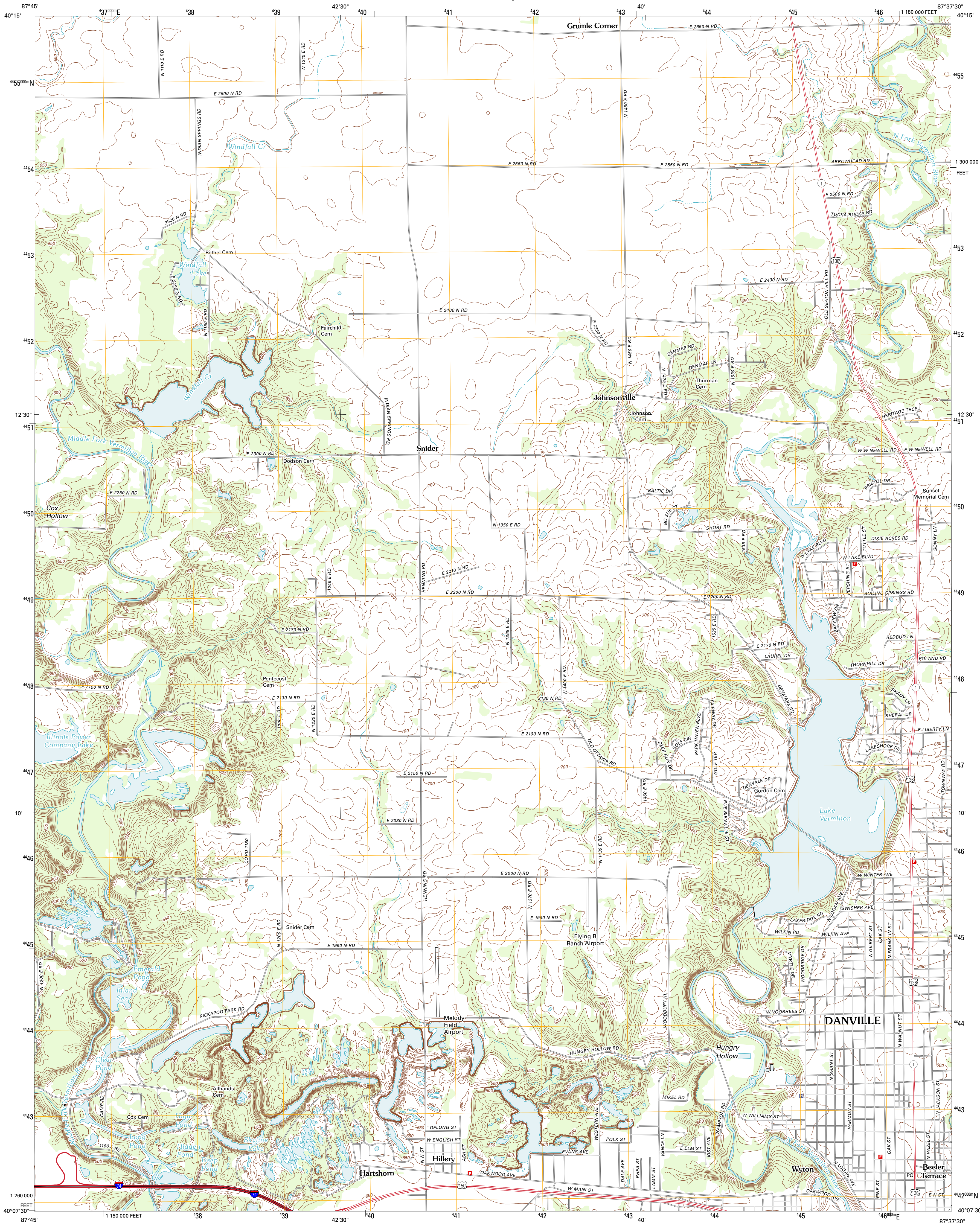




U.S. DEPARTMENT OF THE INTERIOR
U. S. GEOLOGICAL SURVEY



DANVILLE NW QUADRANGLE
ILLINOIS-VERMILION CO.
7.5-MINUTE SERIES

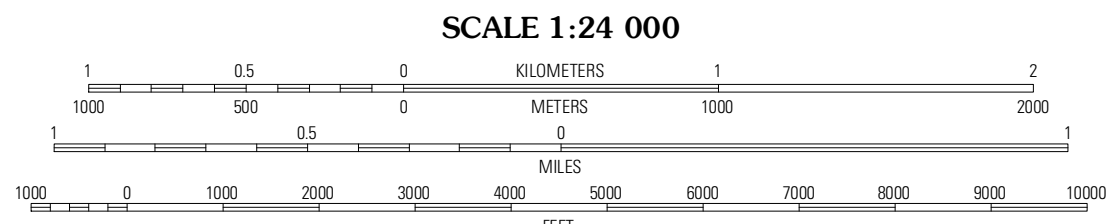


Produced by the United States Geological Survey
North American Datum of 1983 (NAD83)
World Geodetic System of 1984 (WGS84). Projection and
1 000-meter grid: Universal Transverse Mercator, Zone 16T
10 000-foot ticks: Illinois Coordinate System of 1983 (east
zone)

Imagery.....NAIP, August 2011
Roads.....©2006-2011 TomTom
Names.....GNIS, 2011
Hydrography.....National Hydrography Dataset, 2011
Contours.....National Elevation Dataset, 2012
Boundaries.....Census, IBWC, IBG, USGS, 1972 - 2010

UTM GRID AND 2012 MAGNETIC NORTH
DECLINATION AT CENTER OF SHEET

U.S. National Grid
100,000-m Square ID
DK
Grid Zone Designation
18T



CONTOUR INTERVAL 10 FEET
NORTH AMERICAN VERTICAL DATUM OF 1988

This map was produced to conform with the
National Geospatial Program US Topo Product Standard, 2011.
A metadata file associated with this product is draft version 0.6.3



QUADRANGLE LOCATION

Potomac	Henning	Bismarck
Collins	Danville NW	Danville NE
Oakwood	Danville SW	Danville SE

ADJOINING 7.5' QUADRANGLES

ROAD CLASSIFICATION

Interstate Route
State Route
US Route
Ramp
Local Road
4WD

DANVILLE NW, IL
2012