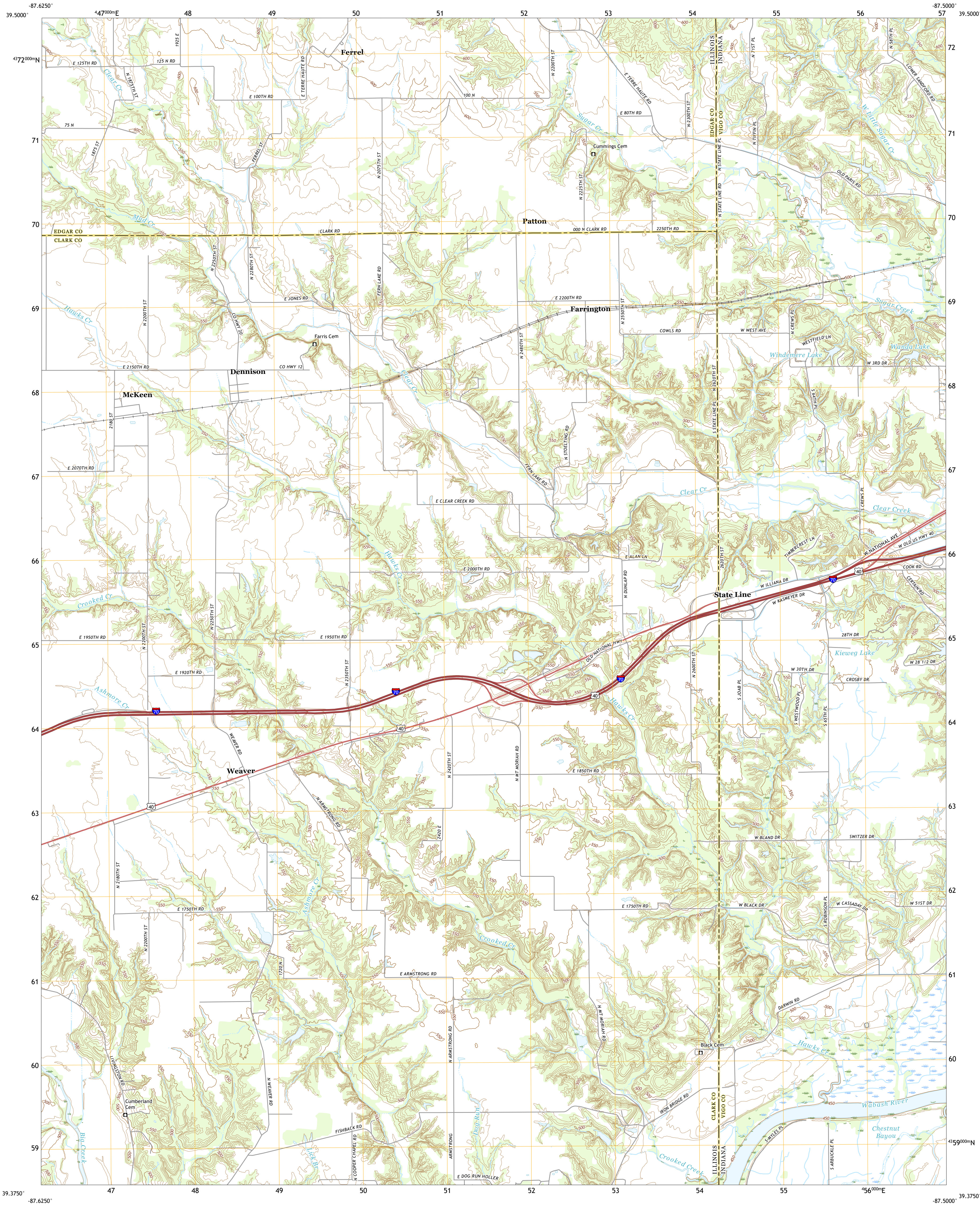




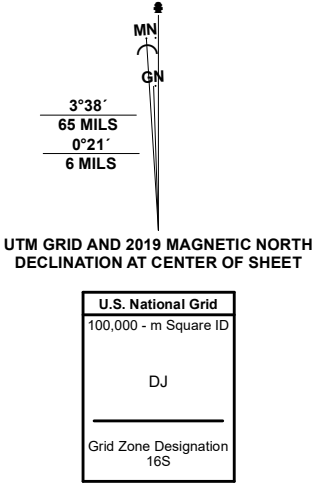
U.S. DEPARTMENT OF THE INTERIOR
U.S. GEOLOGICAL SURVEY



DENNISON QUADRANGLE
ILLINOIS - INDIANA
7.5-MINUTE SERIES

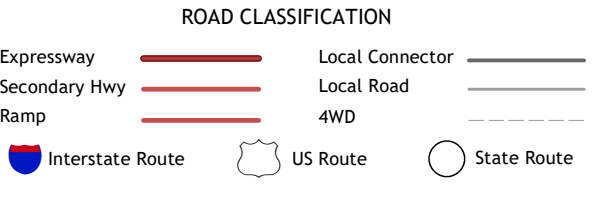


Produced by the United States Geological Survey
North American Datum of 1983 (NAD83)
World Geodetic System of 1984 (WGS84). Projection and
1 000-meter grid/Universal Transverse Mercator, Zone 16S
This map is not a legal document. Boundaries may be
generalized for this map scale. Private lands within government
reservations may not be shown. Obtain permission before
entering private lands.
Imagery.....NAIP, August 2019 - June 2020
Roads.....U.S. Census Bureau, 2016 - 2019
Names.....GNIS, 1979 - 2019
Hydrography.....National Hydrography Dataset, 2007 - 2019
Contours.....National Elevation Dataset, 2017
Boundaries.....Multiple sources; see metadata file, 2018 - 2019
Public Land Survey System.....BLM, 2018 - 2020
Wetlands.....FWS National Wetlands Inventory, 1980



1	2	3
4	5	6
7	8	9

1 Paris South
2 Sandford
3 New Goshen
4 Marshall
5 Terre Haute
6 Snyder
7 Hutton
8 Pimento



DENNISON, IL, IN
2021



NSN 16430163651188
NSA REF. NO. USGSX24K11955