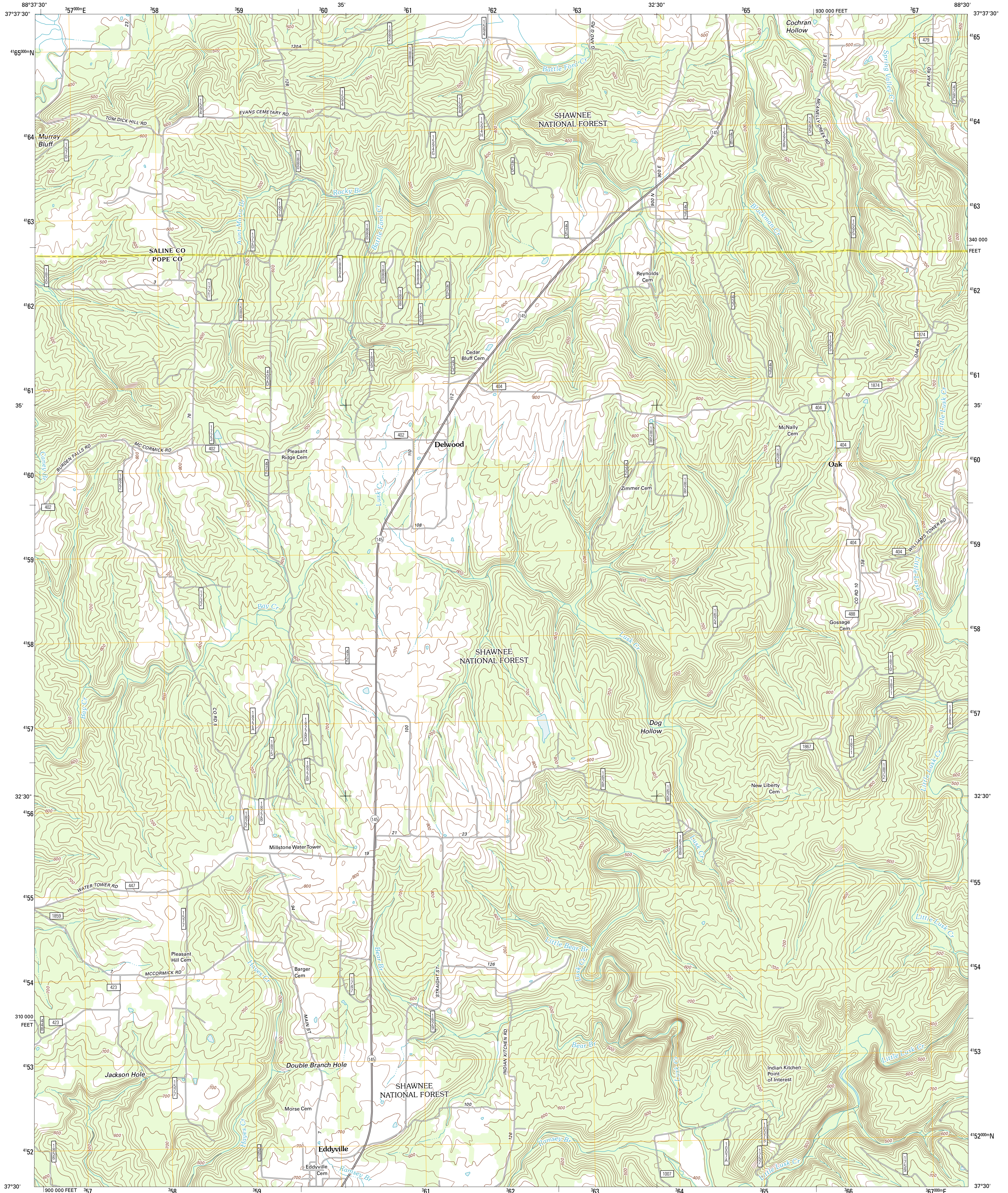




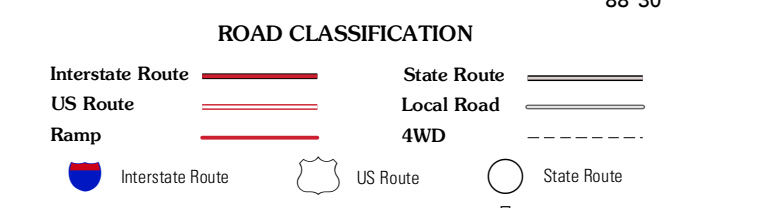
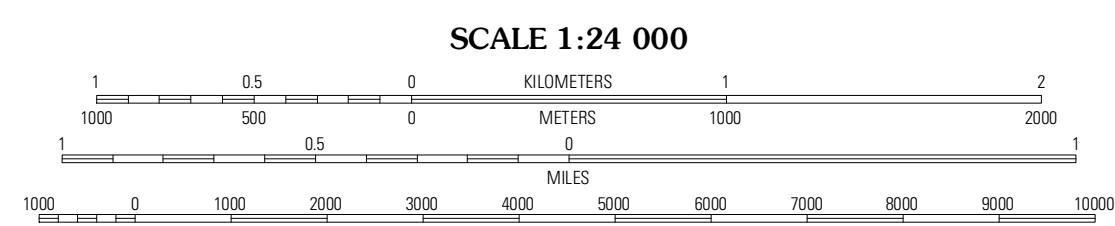
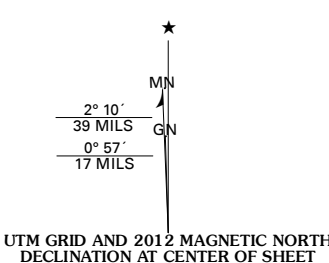
U.S. DEPARTMENT OF THE INTERIOR  
U. S. GEOLOGICAL SURVEY



EDDYVILLE QUADRANGLE  
ILLINOIS  
7.5-MINUTE SERIES



Produced by the United States Geological Survey  
North American Datum of 1983 (NAD83)  
World Geodetic System of 1984 (WGS84). Projection and  
1 000-meter grid: Universal Transverse Mercator, Zone 16S  
10 000-foot ticks: Illinois Coordinate System of 1983 (east  
zone)



QUADRANGLE LOCATION

Carlin Mills	Harrisburg	Rudement
Stonfort	<b>Eddyville</b>	Herod
Glenade	Waltersburg	Shelberville

ADJOINING 7.5 QUADRANGLES

Check with local Forest Service unit for current travel conditions and restrictions.

EDDYVILLE, IL  
2012

Imagery: NAF, August 2011  
Roads: 2006-2011 TomTom  
Roads within US Forest Service Lands: FSTopo Data with limited Forest Service updates, 2009  
Names: GNS, 2011  
Hydrography: National Hydrography Dataset, 2011  
Contours: National Elevation Dataset, 2009  
Boundaries: Census, IBWC, IBC, USGS, 1972 - 2010

U.S. National Grid	CG
100,000m Square ID	Grid Zone Designation
	18S

CONTOUR INTERVAL 20 FEET  
NORTH AMERICAN VERTICAL DATUM OF 1988

This map was produced to conform with the National Geospatial Program US Topo Product Standard, 2011. A metadata file associated with this product is draft version 0.6.3