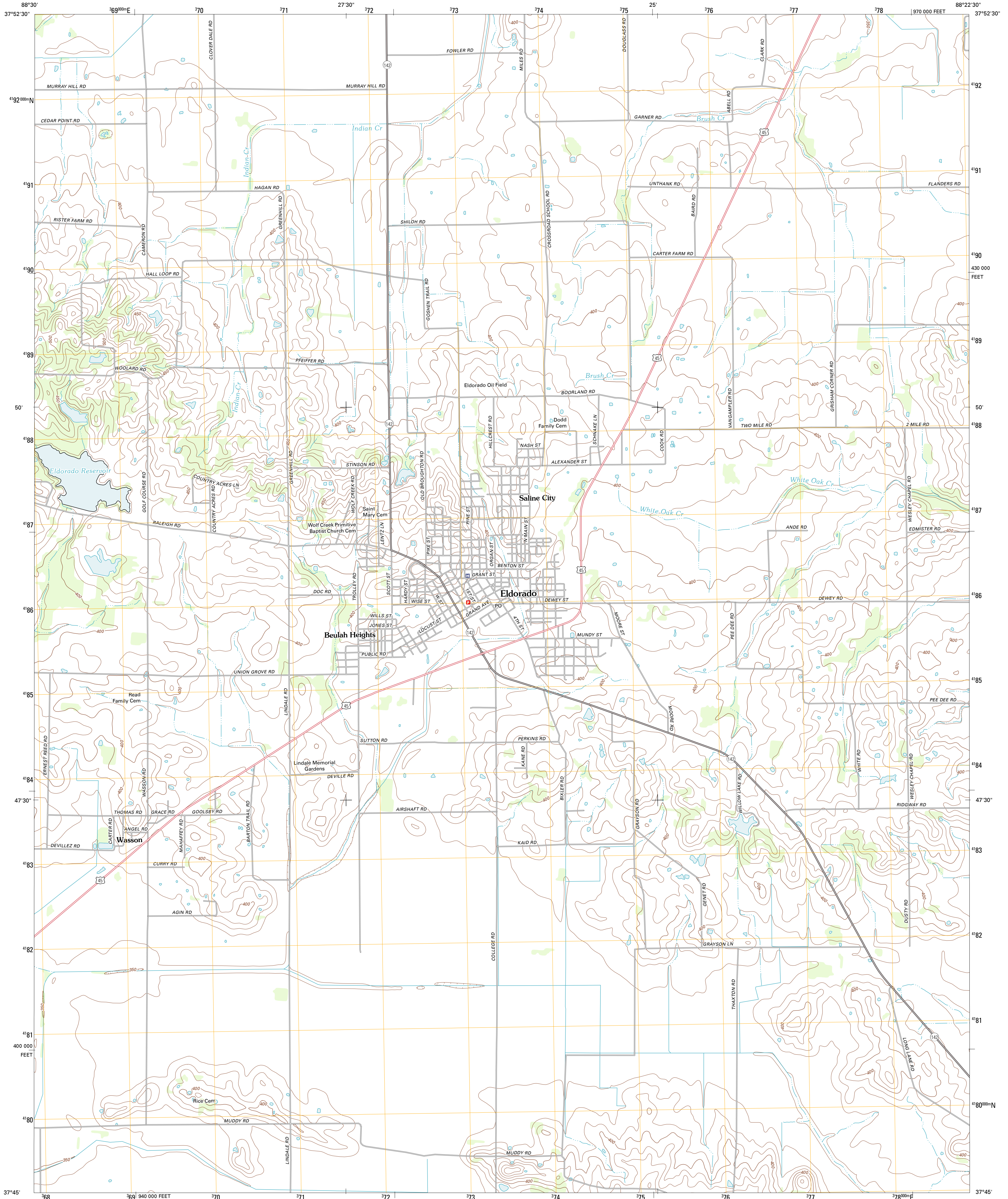




U.S. DEPARTMENT OF THE INTERIOR
U. S. GEOLOGICAL SURVEY

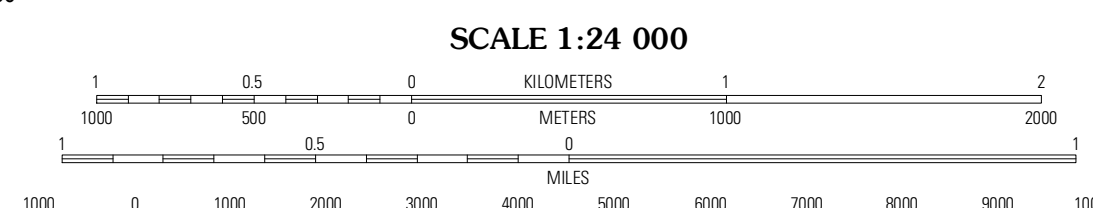
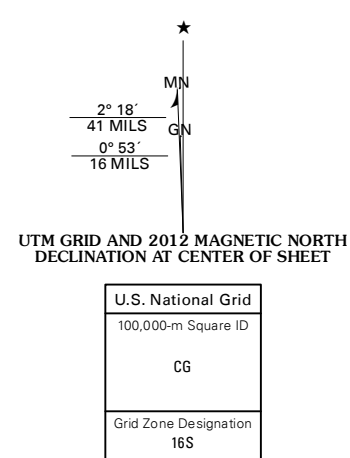


ELDORADO QUADRANGLE
ILLINOIS-SALINE CO.
7.5-MINUTE SERIES



Produced by the United States Geological Survey
North American Datum of 1983 (NAD83)
World Geodetic System of 1984 (WGS84). Projection and
1 000 meter grid: Universal Transverse Mercator, Zone 16S
10 000-foot ticks: Illinois Coordinate System of 1983 (east
zone)

Imagery: NAI, August 2011
Roads: 9/2006-2011 TomTom
Names: 2011
Hydrography: National Hydrography Dataset, 2011
Contours: National Elevation Dataset, 2008
Boundaries: Census, IBWC, IBC, USGS, 1972 - 2010



CONTOUR INTERVAL 10 FEET
NORTH AMERICAN VERTICAL DATUM OF 1988

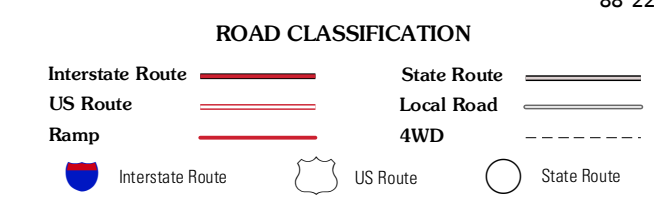
This map was produced to conform with the
National Geospatial Program US Topo Product Standard, 2011.
A metadata file associated with this product is draft version 0.6.3



QUADRANGLE LOCATION

Walpole	Broughton	Norby City
Galatia	Eldorado	Ridgway
Harrisburg	Rudement	Equality

ADJOINING 7.5 QUADRANGLES



ELDORADO, IL
2012