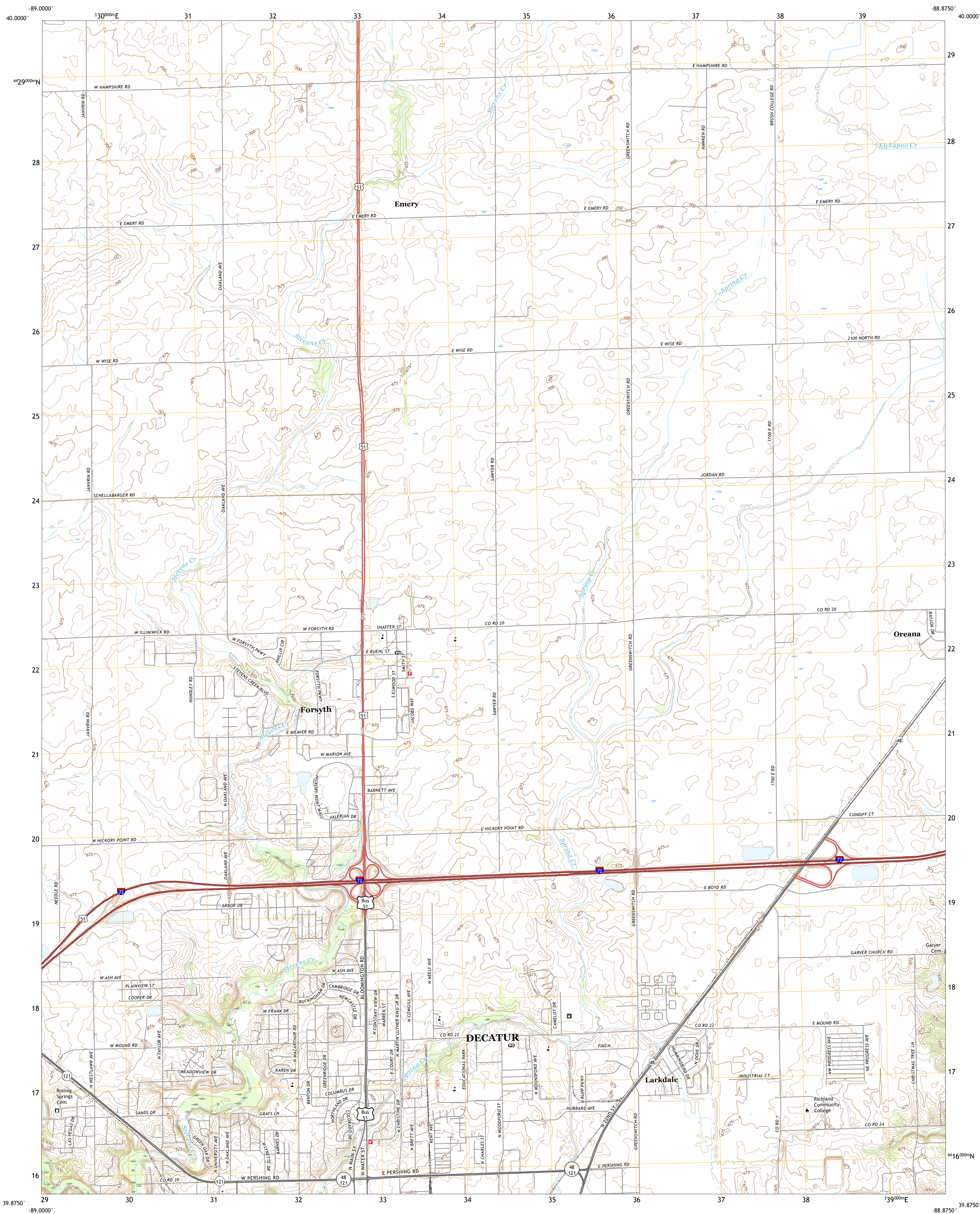




U.S. DEPARTMENT OF THE INTERIOR  
U.S. GEOLOGICAL SURVEY



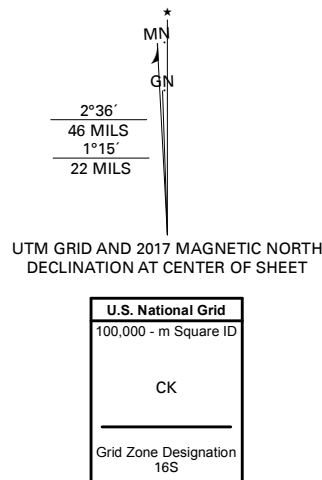
FORSYTH QUADRANGLE  
ILLINOIS - MACON COUNTY  
7.5-MINUTE SERIES



Produced by the United States Geological Survey

North American Datum of 1983 (NAD83)  
World Geodetic System of 1984 (WGS84) - Projection and  
1 000-meter grid/Universal Transverse Mercator, Zone 16S  
This map is not a legal document. Boundaries may be  
generalized for this map scale. Private lands within government  
reservations may not be shown. Obtain permission before  
entering private lands.

Imagery.....NAIP, July 2015 - October 2015  
Roads.....U.S. Census Bureau, 2017  
Names.....GNIS, 1980 - 2017  
Hydrography.....National Hydrography Dataset, 2004 - 2011  
Contours.....National Elevation Dataset, 2017  
Boundaries.....Multiple sources: see metadata file, 2014 - 2016  
Public Land Survey System.....BLM, 2017  
Wetlands.....FWS National Wetlands Inventory 1983 - 1985



CONTOUR INTERVAL 5 FEET  
NORTH AMERICAN VERTICAL DATUM OF 1988

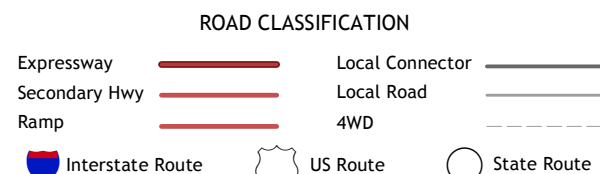
This map was produced to conform with the  
National Geospatial Program US Topo Product Standard, 2011.  
A metadata file associated with this product is draft version 0.6.18



QUADRANGLE LOCATION

1	2	3
4	5	6
7	8	9

1 Kenney  
2 Maroa  
3 Weldon West  
4 Warrensburg  
5 Argenta  
6 Harrisburg  
7 Decatur  
8 Long Creek



FORSYTH, IL  
2018



NSN 1643016365276  
NSA REF NO. USGS X 2 4 K 1 5 8 4 5