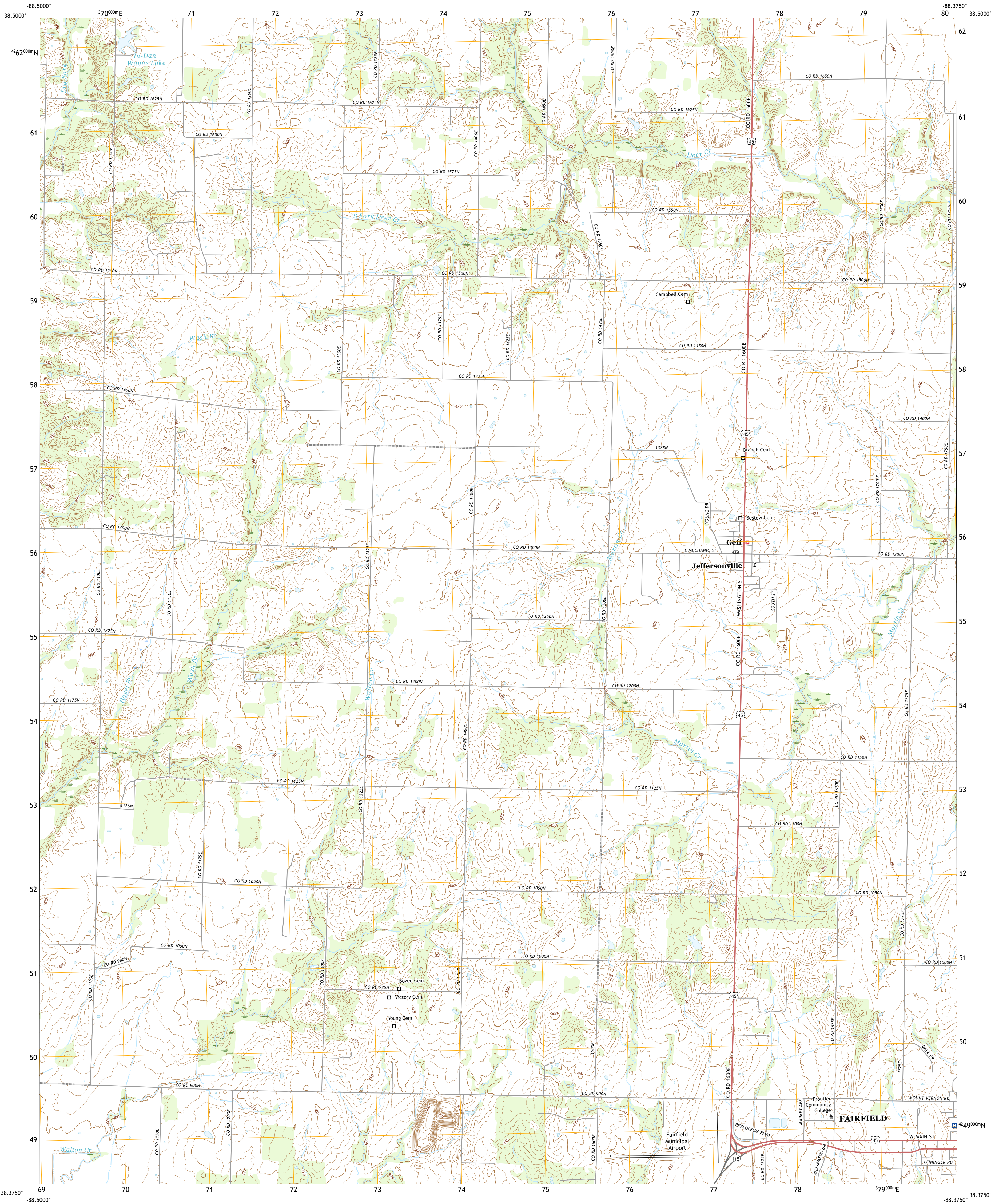




U.S. DEPARTMENT OF THE INTERIOR  
U.S. GEOLOGICAL SURVEY



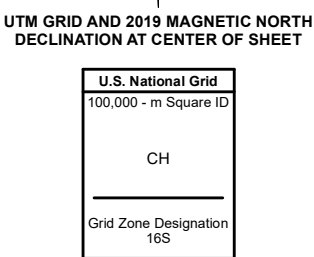
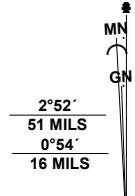
GEFF QUADRANGLE  
ILLINOIS - WAYNE COUNTY  
7.5-MINUTE SERIES



Produced by the United States Geological Survey

North American Datum of 1983 (NAD83)  
World Geodetic System of 1984 (WGS84), Projection and  
1 000-meter grid/Universal Transverse Mercator, Zone 16S  
This map is not a legal document. Boundaries may be  
generalized for this map scale. Private lands within government  
reservations may not be shown. Obtain permission before  
entering private lands.

Imagery.....NAIP, September 2019 - September 2019  
Roads.....U.S. Census Bureau, 2017  
Names.....GNIS, 1980 - 2020  
Hydrography.....National Hydrography Dataset, 2006 - 2018  
Contours.....National Elevation Dataset, 2010  
Boundaries.....Multiple sources: see metadata file 2018 - 2019  
Public Land Survey System.....BLM, 2020  
Wetlands.....FWS National Wetlands Inventory Not Available



CONTOUR INTERVAL 5 FEET  
NORTH AMERICAN VERTICAL DATUM OF 1988  
This map was produced to conform with the  
National Geospatial Program US Topo Product Standard.



1	2	3
4	5	6
7	8	9

ADJOINING QUADRANGLES

- 1 Johnsonville
- 2 Cisne
- 3 Enterprise
- 4 Crisp
- 5 Fairfield
- 6 Wayne City
- 7 Boyleston
- 8 Burnt Prairie

ROAD CLASSIFICATION	
Expressway	Local Connector
Secondary Hwy	Local Road
Ramp	4WD
Interstate Route	US Route
	State Route

GEFF, IL  
2021

