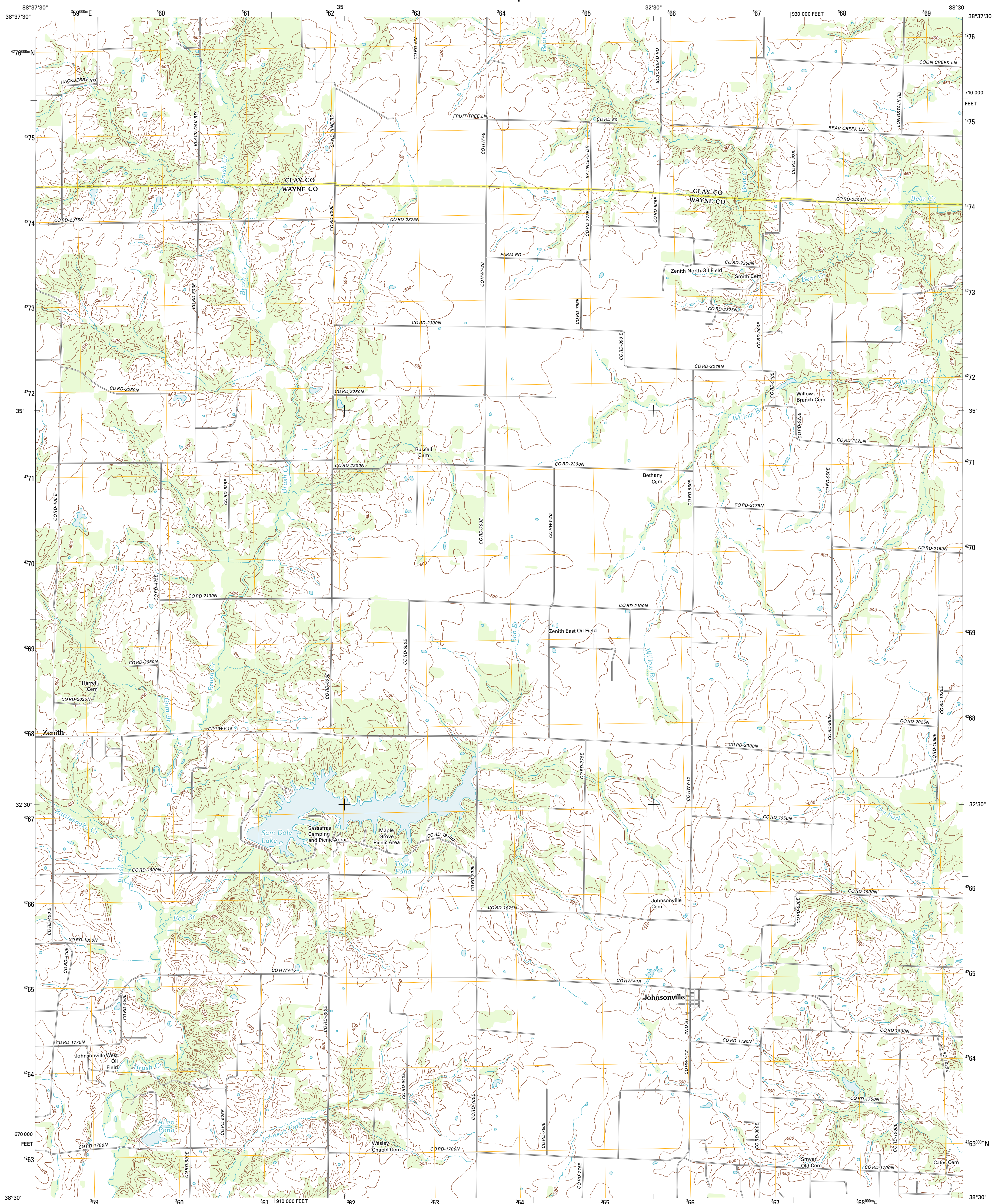




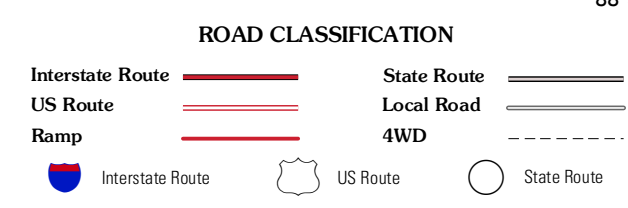
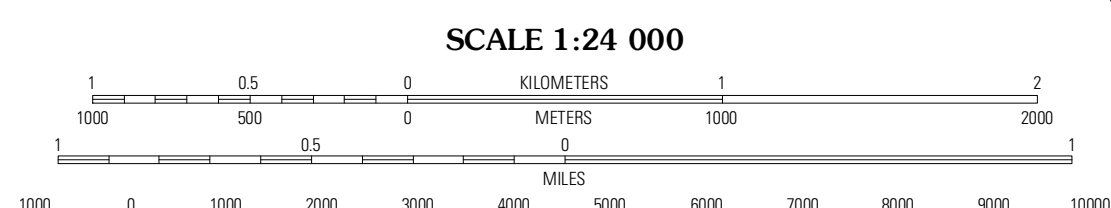
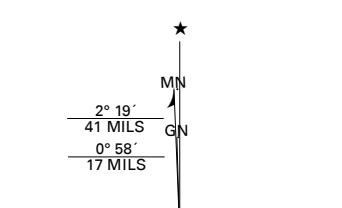
U.S. DEPARTMENT OF THE INTERIOR
U. S. GEOLOGICAL SURVEY



JOHNSONVILLE QUADRANGLE
ILLINOIS
7.5-MINUTE SERIES



Produced by the United States Geological Survey
North American Datum of 1983 (NAD83)
World Geodetic System of 1984 (WGS84). Projection and
1 000-meter grid: Universal Transverse Mercator, Zone 16S
10 000-foot ticks: Illinois Coordinate System of 1983 (east zone)



Imagery.....NAP, August 2011
Roads.....©2006-2011 TomTom
Names.....GNIS, 2011
Hydrography.....National Hydrography Dataset, 2011
Contours.....National Elevation Dataset, 2006
Boundaries.....Census, BWC, IBC, USGS, 1972 - 2010

| | |
|-----------------------|--------------------|
| U.S. National Grid | 100,000m Square ID |
| CH | |
| Grid Zone Designation | 16S |

CONTOUR INTERVAL 10 FEET
NORTH AMERICAN VERTICAL DATUM OF 1988

This map was produced to conform with the National Geospatial Program US Topo Product Standard, 2011. A metadata file associated with this product is draft version 0.6.3

QUADRANGLE LOCATION

| | | |
|--------------|--------------|--------|
| Xenia | Xenia NE | Flore |
| Orchardville | Johnsonville | Claire |
| Shields | Crisp | Geff |

JOHNSONVILLE, IL
2012

ADJOINING 7.5 QUADRANGLES