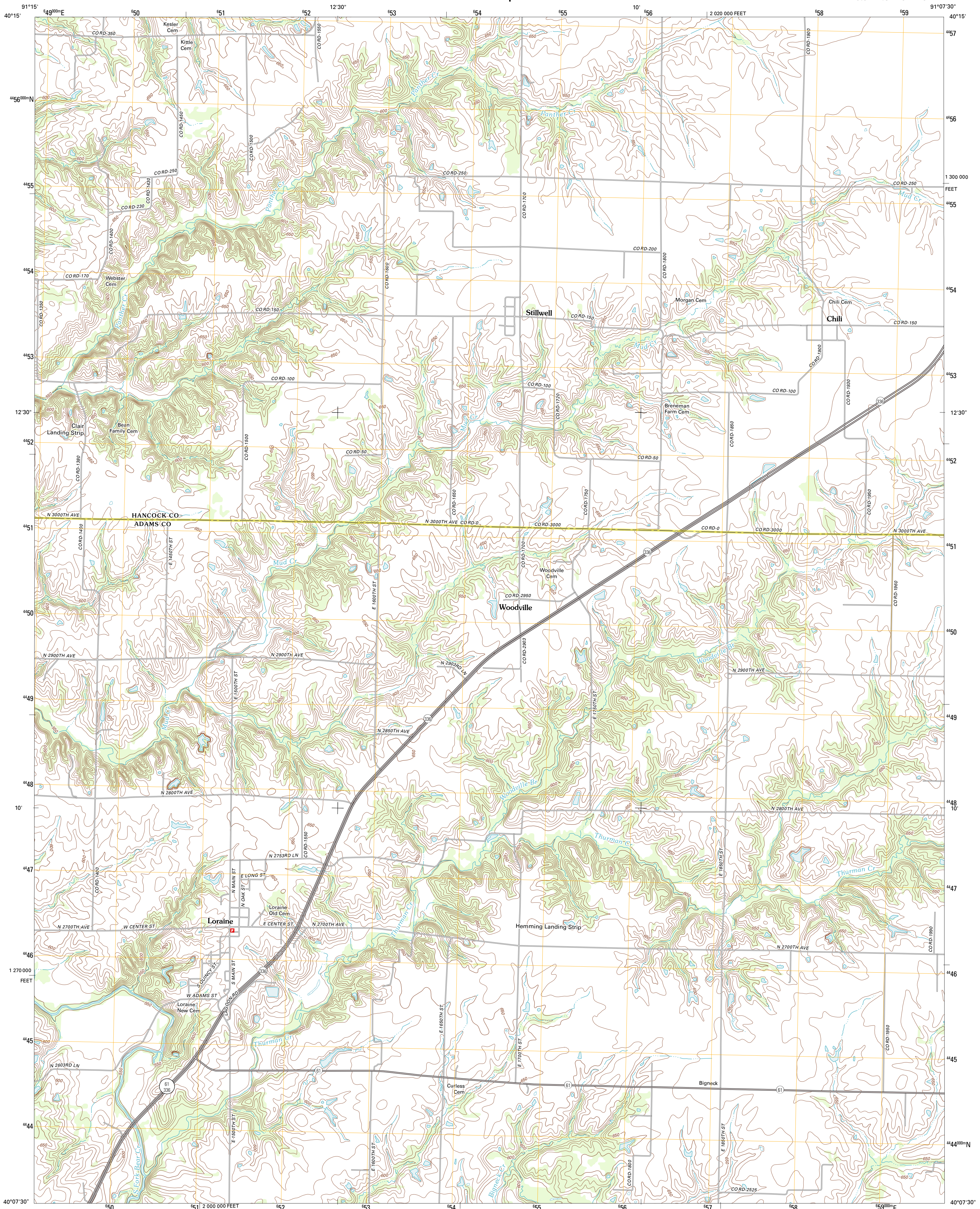




U.S. DEPARTMENT OF THE INTERIOR
U. S. GEOLOGICAL SURVEY

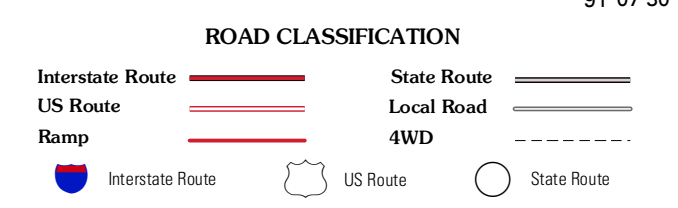
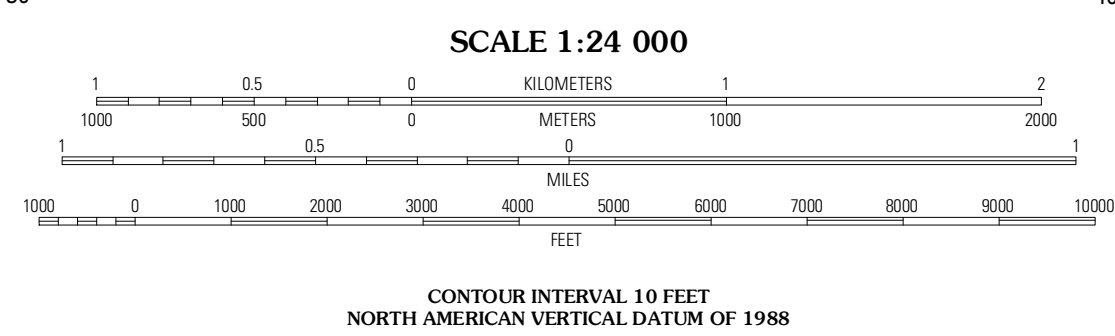
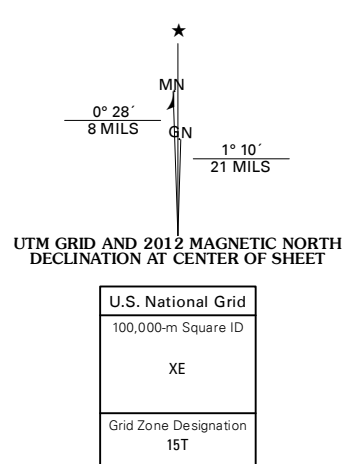


LORAIN QUADRANGLE
ILLINOIS
7.5-MINUTE SERIES



Produced by the United States Geological Survey
North American Datum of 1983 (NAD83)
World Geodetic System of 1984 (WGS84). Projection and
1 000-meter grid: Universal Transverse Mercator, Zone 15T
10 000-foot ticks: Illinois Coordinate System of 1983 (west
zone)

Imagery:.....NAIP, August 2011
Roads:.....©2006-2011 TomTom
Names:.....©2006-2011 TomTom
Hydrography:.....National Hydrography Dataset, 2011
Contours:.....National Elevation Dataset, 2012
Boundaries:.....Census, IBWC, IBC, USGS, 1972 - 2010



Sutter	West Point	Bentley
Toga	Loraine	Bowen
Mendon	Coatsburg	Camp Point

ADJOINING 7.5' QUADRANGLES

LORAIN, IL
2012