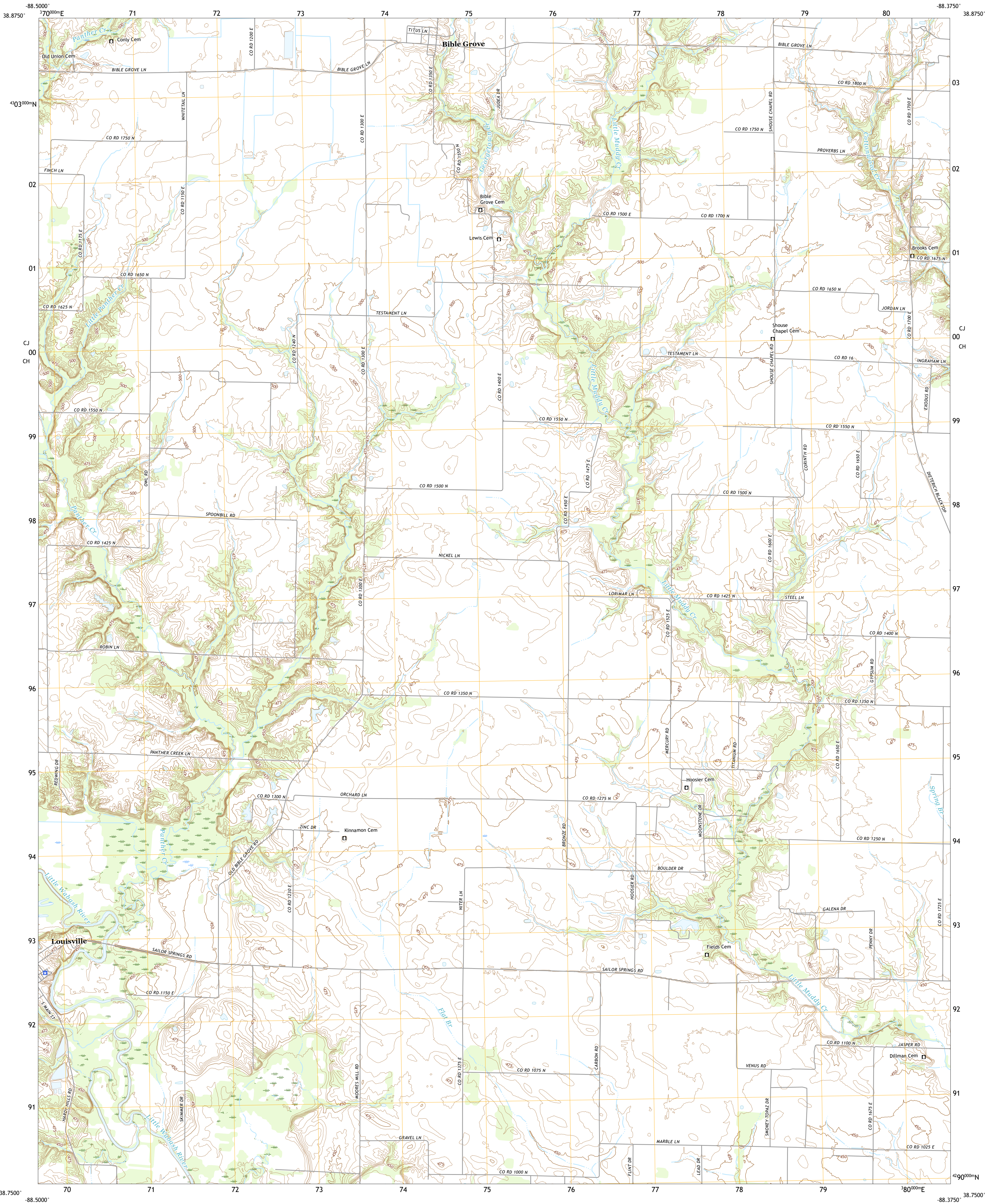




U.S. DEPARTMENT OF THE INTERIOR  
U.S. GEOLOGICAL SURVEY



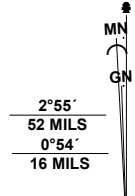
LOUISVILLE EAST QUADRANGLE  
ILLINOIS - CLAY COUNTY  
7.5-MINUTE SERIES



Produced by the United States Geological Survey

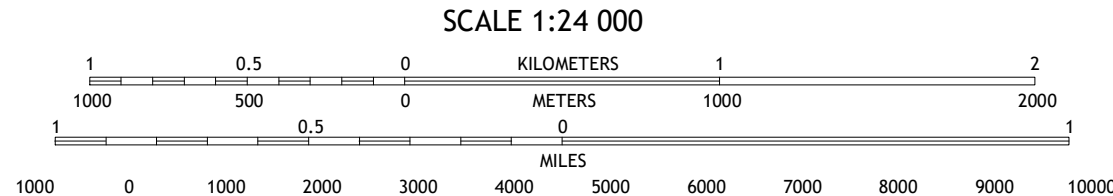
North American Datum of 1983 (NAD83)  
World Geodetic System of 1984 (WGS84). Projection and  
1 000-meter grid/Universal Transverse Mercator, Zone 16S  
This map is not a legal document. Boundaries may be  
generalized for this map scale. Private lands within government  
reservations may not be shown. Obtain permission before  
entering private lands.

Imagery.....NAIP, September 2019 - September 2019  
Roads.....U.S. Census Bureau, 2017  
Names.....GNIS, 1980 - 2020  
Hydrography.....National Hydrography Dataset, 2006 - 2018  
Contours.....National Elevation Dataset, 2017  
Boundaries.....Multiple sources; see metadata file 2018 - 2019  
Public Land Survey System.....BLM, 2020  
Wetlands.....FWS National Wetlands Inventory Not Available



UTM GRID AND 2019 MAGNETIC NORTH  
DECLINATION AT CENTER OF SHEET

UTM Zone Designation	16S
CH	00



CONTOUR INTERVAL 5 FEET  
NORTH AMERICAN VERTICAL DATUM OF 1988  
This map was produced to conform with the  
National Geospatial Program US Topo Product Standard.



1	2	3
4	5	6
7	8	9

1 Hord  
2 Eberle  
3 Latona  
4 Louisville West  
5 Sailor Springs  
6 Xenia NE  
7 Flora  
8 Clay City

ROAD CLASSIFICATION  
Expressway  
Secondary Hwy  
Ramp  
Local Connector  
Local Road  
4WD  
US Route  
State Route

LOUISVILLE EAST, IL  
2021

