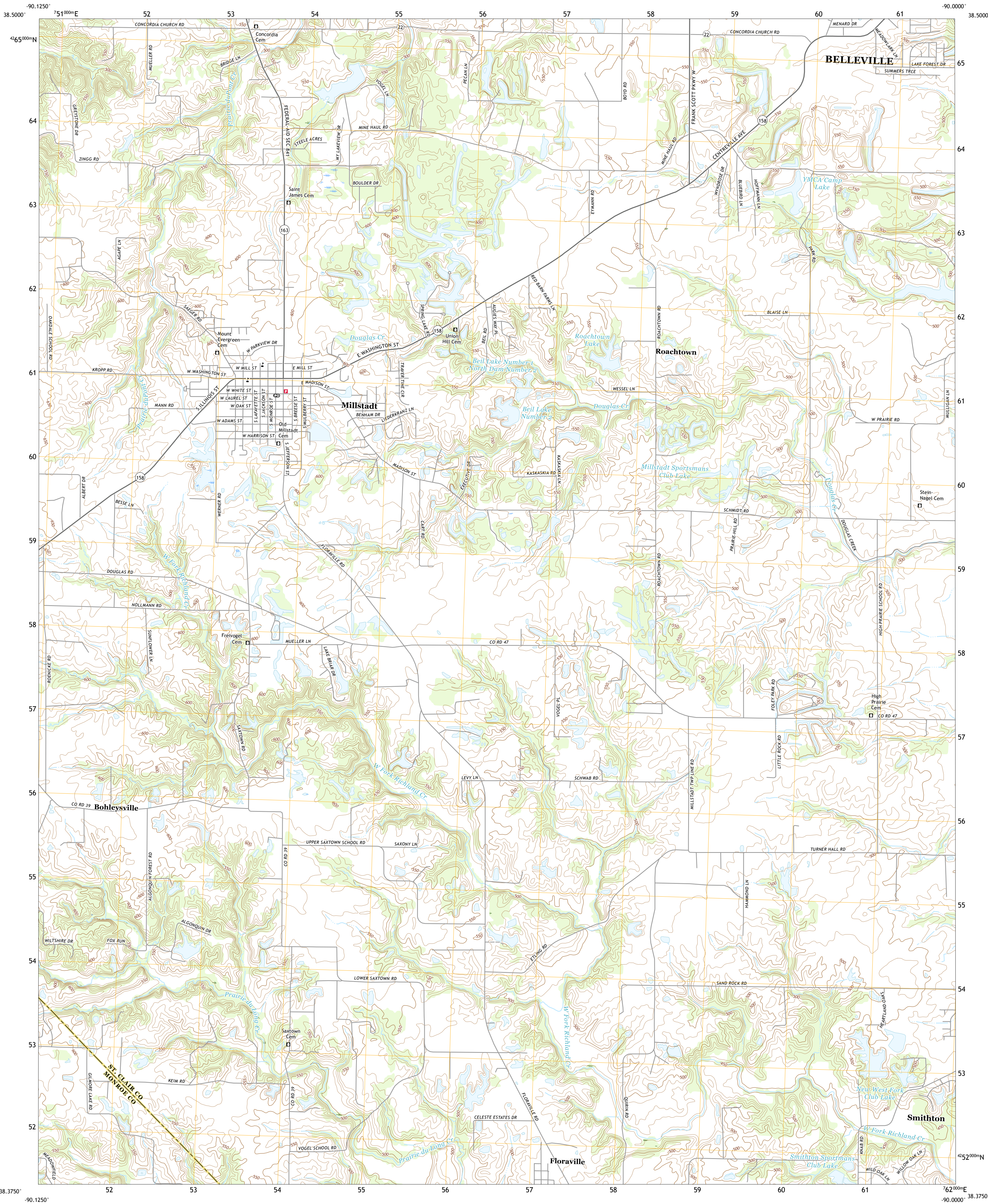




U.S. DEPARTMENT OF THE INTERIOR
U.S. GEOLOGICAL SURVEY



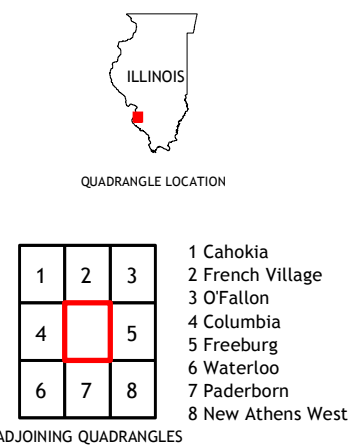
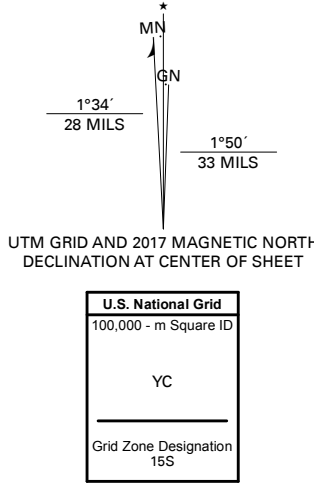
MILLSTADT QUADRANGLE
ILLINOIS
7.5-MINUTE SERIES



Produced by the United States Geological Survey

North American Datum of 1983 (NAD83)
World Geodetic System of 1984 (WGS84) - Projection and
1 000-meter grid/Universal Transverse Mercator, Zone 15S
This map is not a legal document. Boundaries may be
generalized for this map scale. Private lands within government
reservations may not be shown. Obtain permission before
entering private lands.

Imagery.....NAIP, August 2015 - October 2015
Roads.....U.S. Census Bureau, 2017
Names.....GNIS, 1980 - 2017
Hydrography.....National Hydrography Dataset, 2002 - 2014
Contours.....National Elevation Dataset, 2002 - 2008
Boundaries.....Multiple sources: see metadata file, 2014 - 2016
Public Land Survey System.....BLM, 2017
Wetlands.....FWS National Wetlands Inventory 1981 - 1985



MILLSTADT, IL
2018

