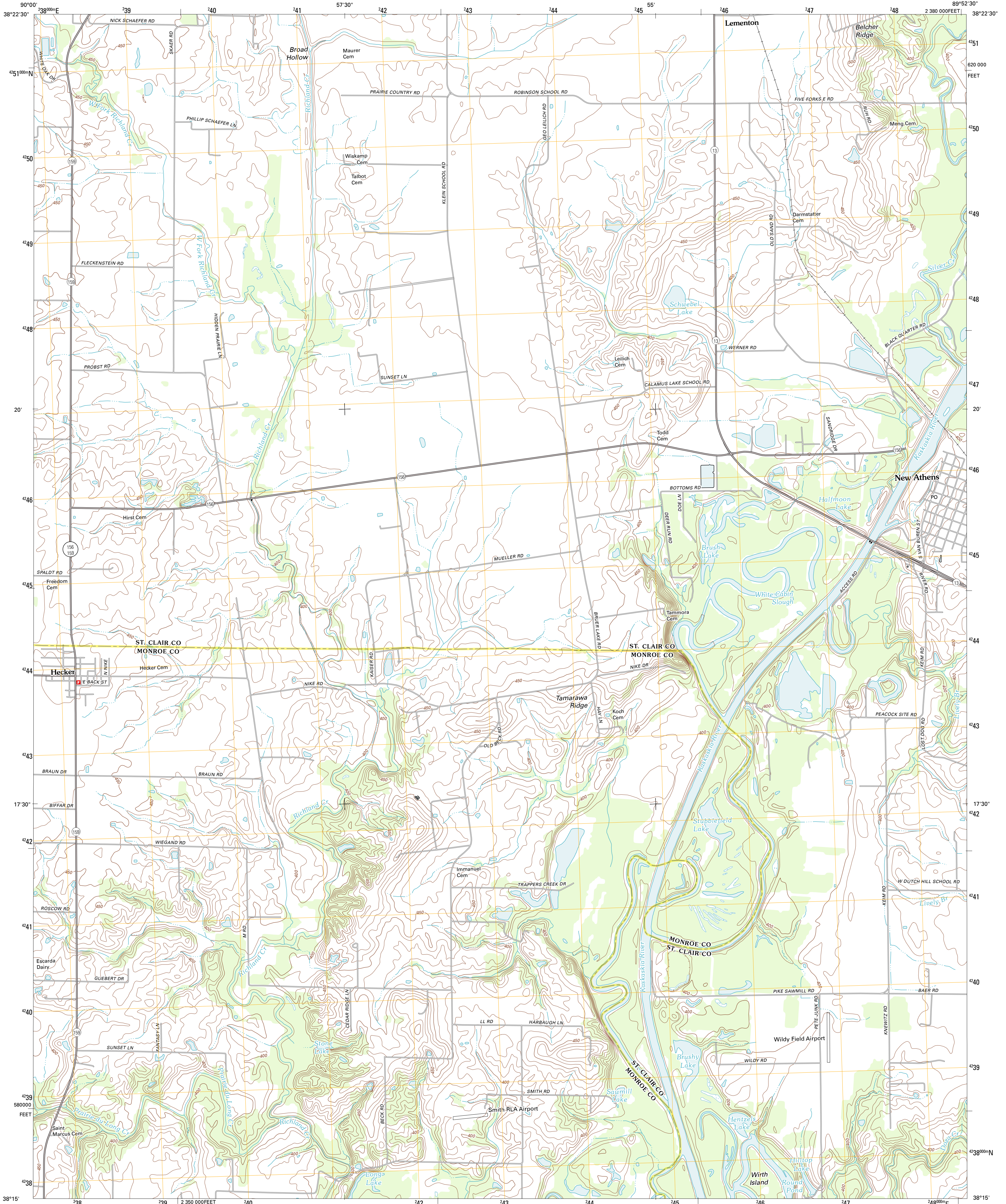




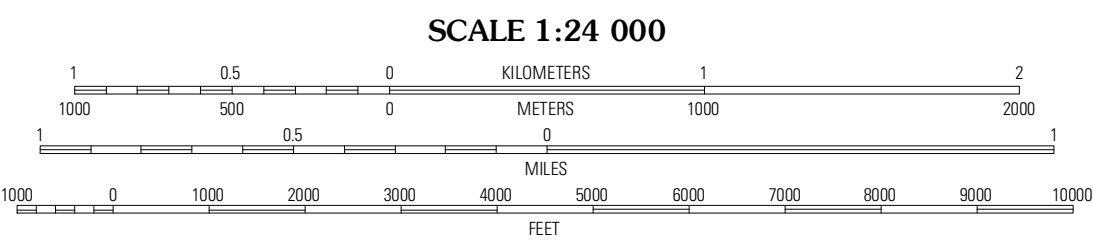
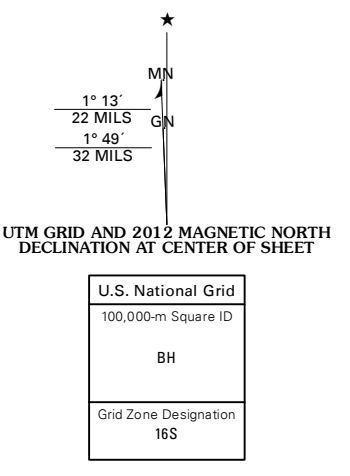
U.S. DEPARTMENT OF THE INTERIOR  
U. S. GEOLOGICAL SURVEY



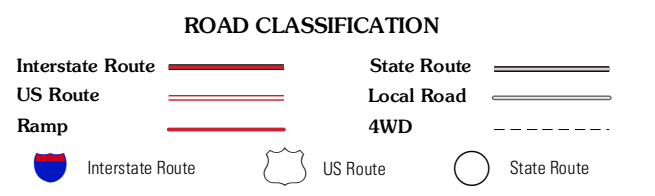
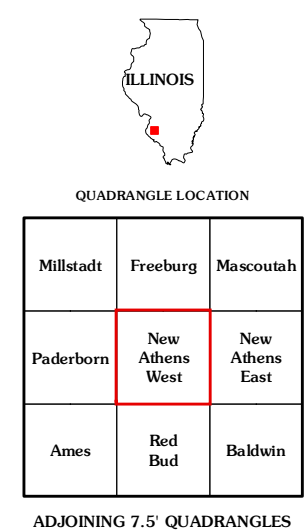
NEW ATHENS WEST QUADRANGLE  
ILLINOIS  
7.5-MINUTE SERIES



Produced by the United States Geological Survey  
North American Datum of 1983 (NAD83)  
World Geodetic System of 1984 (WGS84). Projection and  
1 000-meter grid: Universal Transverse Mercator, Zone 16S  
10 000-foot ticks: Illinois Coordinate System of 1983 (west zone)



CONTOUR INTERVAL 10 FEET  
NORTH AMERICAN VERTICAL DATUM OF 1988  
This map was produced to conform with the  
National Geospatial Program US Topo Product Standard, 2011.  
A metadata file associated with this product is draft version 0.6.3



NEW ATHENS WEST, IL  
2012

Imagery:.....NAIP, August 2011  
Roads:.....©2006-2011 TomTom  
Names:.....©2011  
Hydrography:.....National Hydrography Dataset, 2011  
Contours:.....National Elevation Dataset, 2008  
Boundaries:.....Census, IBWC, IBC, USGS, 1972 - 2010

U.S. National Grid  
300,000-m Square ID  
BR  
Grid Zone Designation  
16S

ADJOINING 7.5 QUADRANGLES