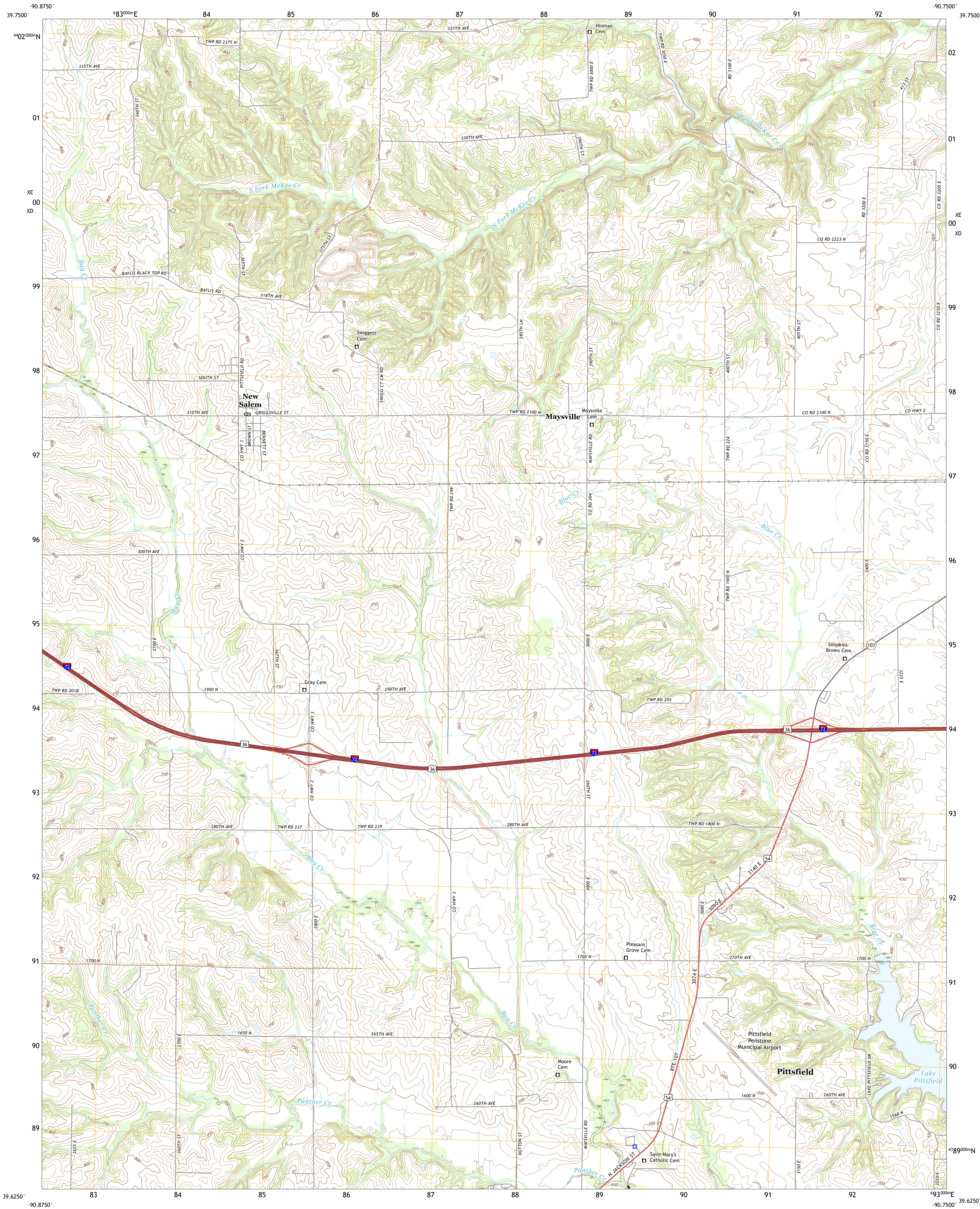




U.S. DEPARTMENT OF THE INTERIOR  
U.S. GEOLOGICAL SURVEY



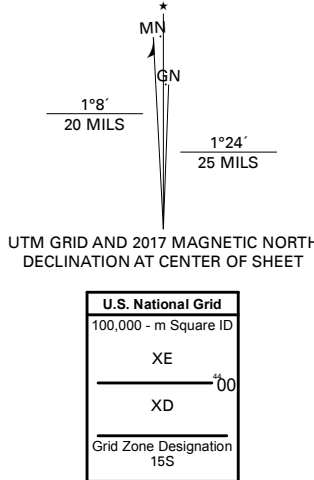
NEW SALEM QUADRANGLE  
ILLINOIS - PIKE COUNTY  
7.5-MINUTE SERIES



Produced by the United States Geological Survey

North American Datum of 1983 (NAD83)  
World Geodetic System of 1984 (WGS84). Projection and  
1 000-meter grid/Universal Transverse Mercator, Zone 15S  
This map is not a legal document. Boundaries may be  
generalized for this map scale. Private lands within government  
reservations may not be shown. Obtain permission before  
entering private lands.

Imagery.....NAIP, August 2015 - October 2015  
Roads.....U.S. Census Bureau, 2017  
Names.....GNIS, 1980 - 2017  
Hydrography.....National Hydrography Dataset, 2005  
Contours.....National Elevation Dataset, 2017  
Boundaries.....Multiple sources: see metadata file 2014 - 2016  
Public Land Survey System.....BLM, 2017  
Wetlands.....FWS National Wetlands Inventory 1985



QUADRANGLE LOCATION

1	2	3
4	5	6
7	8	9

- 1 Fishhook
- 2 Perry West
- 3 Perry East
- 4 Baylis
- 5 Griggsville
- 6 Summer Hill
- 7 Pittsfield
- 8 Milton

ROAD CLASSIFICATION		
Expressway	Local Connector	
Secondary Hwy	Local Road	
Ramp	4WD	
Interstate Route	US Route	State Route

NEW SALEM, IL  
2018



NSN 1643016365582  
NSA REF NO. USGSX24K31847