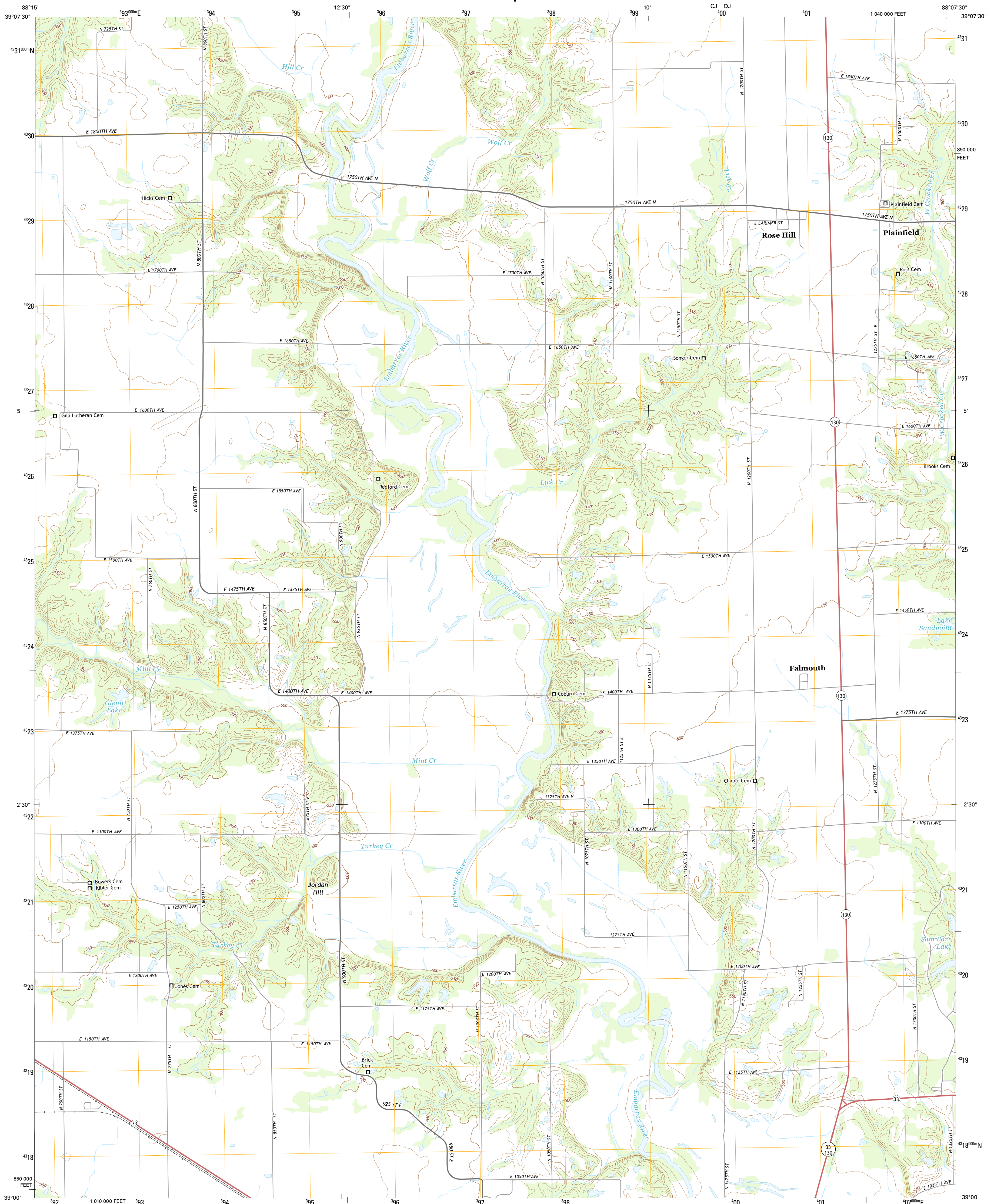




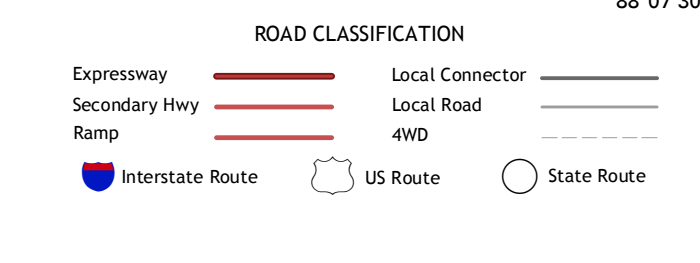
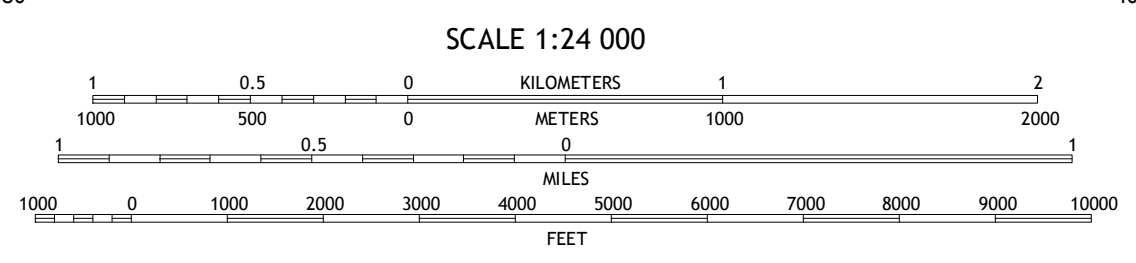
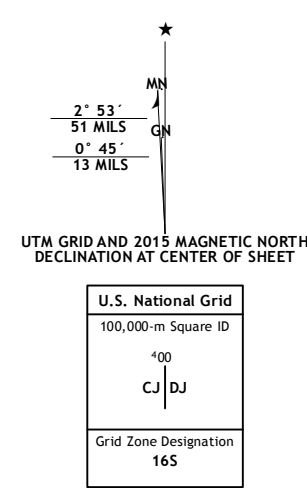
U.S. DEPARTMENT OF THE INTERIOR
U.S. GEOLOGICAL SURVEY



ROSE HILL QUADRANGLE
ILLINOIS-JASPER CO.
7.5-MINUTE SERIES



Produced by the United States Geological Survey
 North American Datum of 1983 (NAD83)
 World Geodetic System of 1984 (WGS84) Projection and
 1 000-meter grid: Universal Transverse Mercator, Zone 16S
 10 000-foot ticks: Illinois Coordinate System of 1983 (east zone)
 This map is not a legal document. Boundaries may be
 generalized for this map scale. Private lands within government
 reservations may not be shown. Obtain permission before
 entering private lands.
 Imagery.....NAIP, September 2014
 Roads.....HERE, ©2013 - 2014
 Names.....GNIS, 2015
 Hydrography.....National Hydrography Dataset, 2014
 Contours.....National Elevation Dataset, 2008
 Boundaries.....Multiple sources; see metadata file 1972 - 2015



ADJOINING QUADRANGLES

1	2	3
4	5	6
7	8	

1 Woodbury
 2 Greenup
 3 Hazel Dell
 4 Wheeler
 5 Yale
 6 Latona
 7 Newton
 8 Sainte Marie

ROSE HILL, IL
2015

