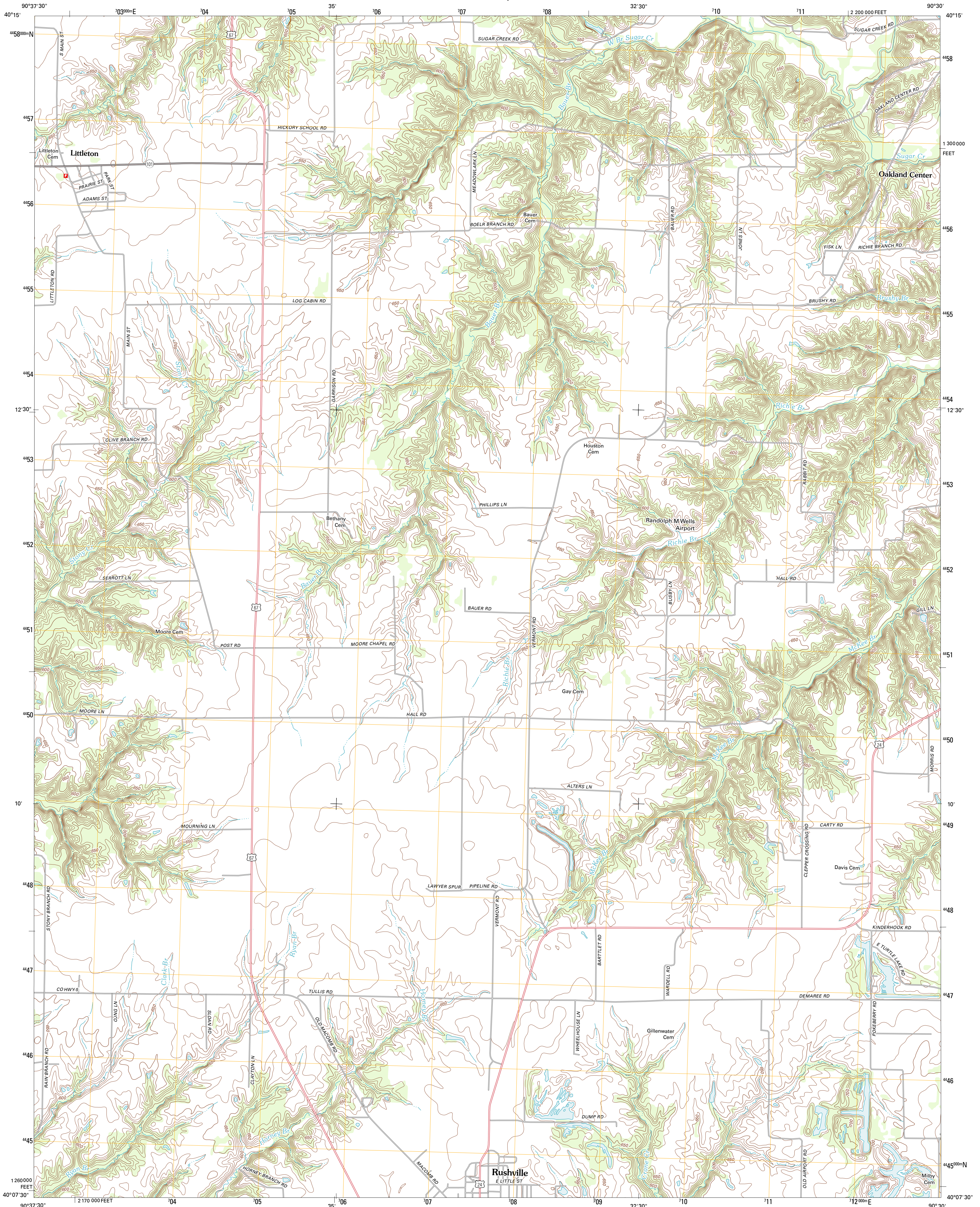




U.S. DEPARTMENT OF THE INTERIOR  
U. S. GEOLOGICAL SURVEY

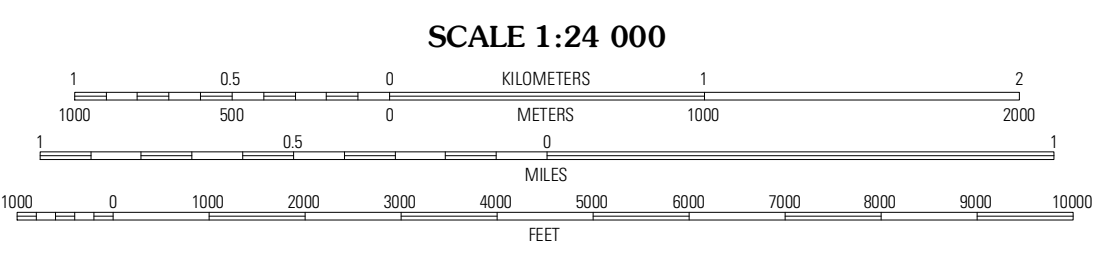
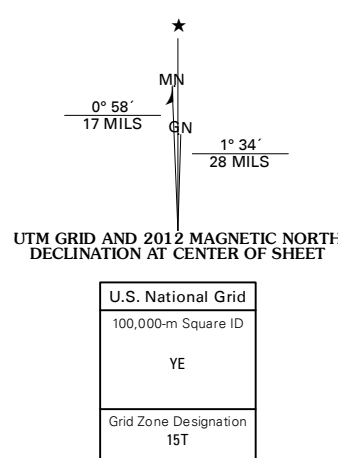


RUSHVILLE NORTH QUADRANGLE  
ILLINOIS-SCHUYLER CO.  
7.5-MINUTE SERIES



Produced by the United States Geological Survey  
North American Datum of 1983 (NAD83)  
World Geodetic System of 1984 (WGS84). Projection and  
1 000-meter grid: Universal Transverse Mercator, Zone 15T  
10 000-foot ticks: Illinois Coordinate System of 1983 (west  
zone)

Imagery:.....NAIP, August 2011  
Roads:.....©2006-2011 TomTom  
Names:.....©2011  
Hydrography:.....National Hydrography Dataset, 2011  
Contours:.....National Elevation Dataset, 2012  
Boundaries:.....Census, IBWC, IBC, USGS, 1972 - 2010



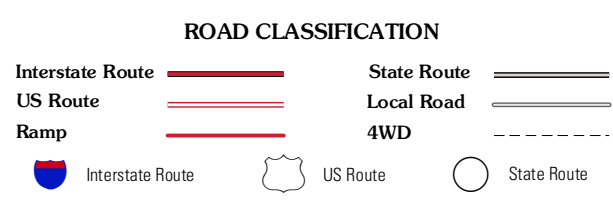
CONTOUR INTERVAL 10 FEET  
NORTH AMERICAN VERTICAL DATUM OF 1988  
This map was produced to conform with the  
National Geospatial Program US Topo Product Standard, 2011.  
A metadata file associated with this product is draft version 0.6.3



QUADRANGLE LOCATION

Doddsville	Industry	Vermont
Erwin	Rushville North	Ray
Ripley	Rushville South	Beardstown

ADJOINING 7.5 QUADRANGLES



RUSHVILLE NORTH, IL  
2012