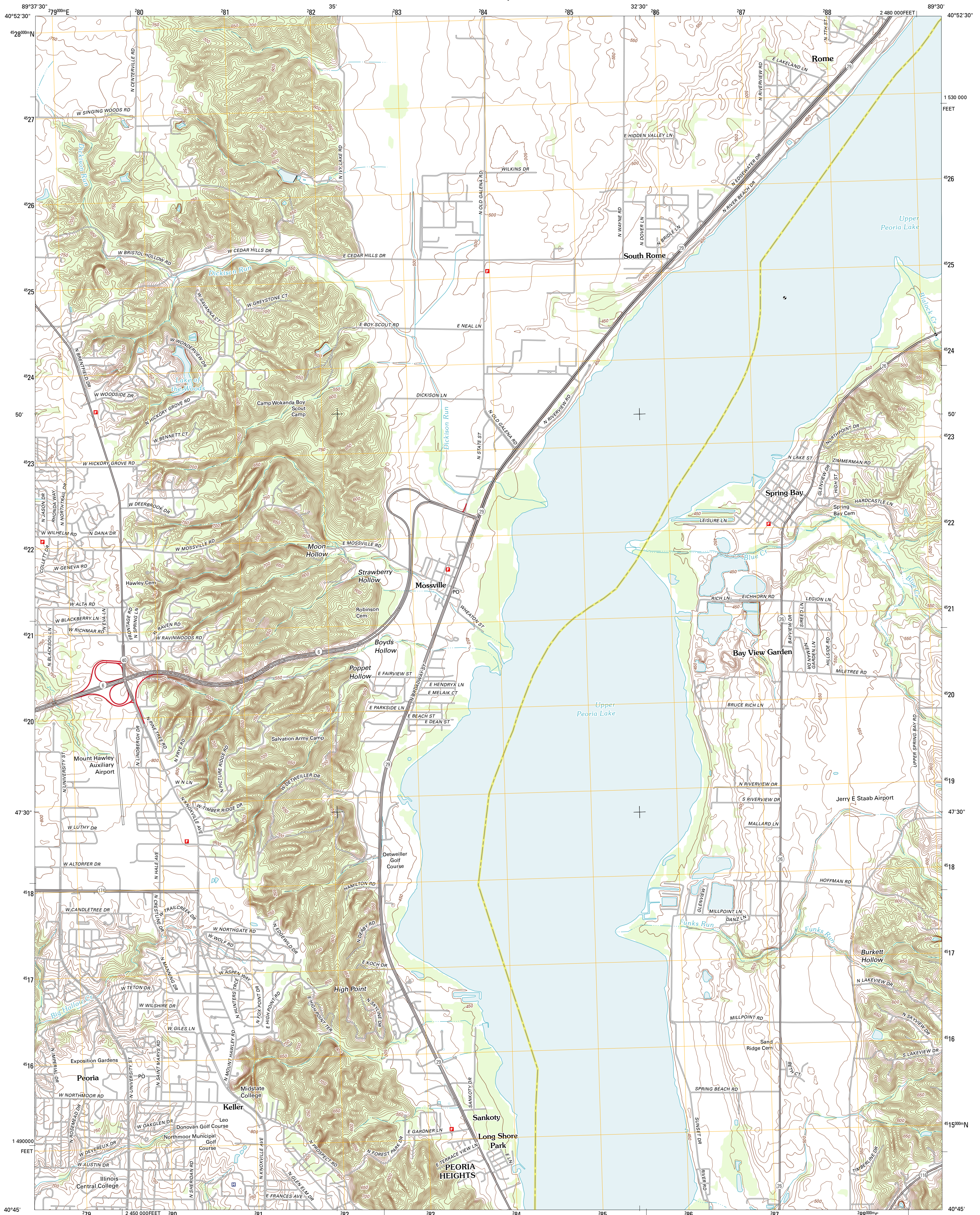




U.S. DEPARTMENT OF THE INTERIOR
U. S. GEOLOGICAL SURVEY

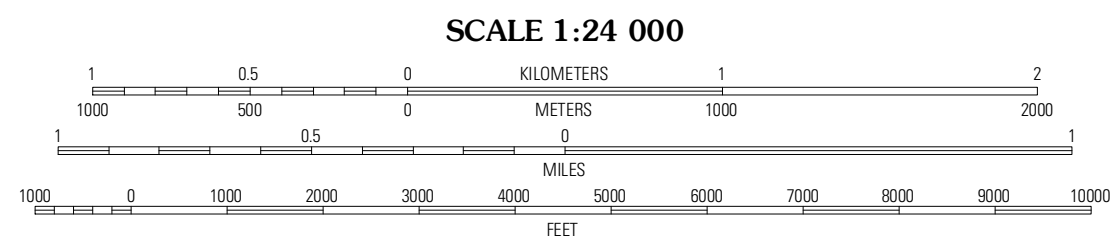
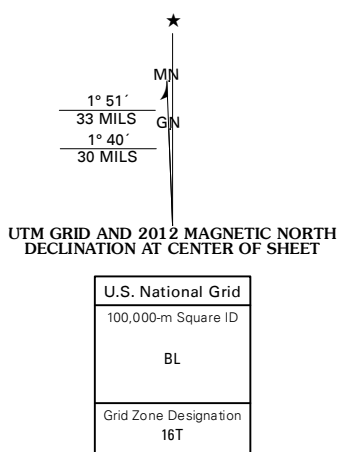


SPRING BAY QUADRANGLE
ILLINOIS
7.5-MINUTE SERIES



Produced by the United States Geological Survey
North American Datum of 1983 (NAD83)
World Geodetic System of 1984 (WGS84). Projection and
1 000-meter grid: Universal Transverse Mercator, Zone 16T
10 000-foot ticks: Illinois Coordinate System of 1983 (west
zone)

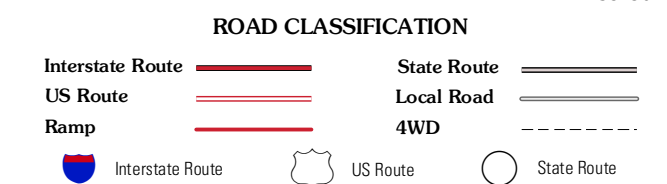
Imagery.....NAIP, August 2011
Roads.....©2006-2011 TomTom
Names.....©2011 National Geographic Society
Hydrography.....National Hydrography Dataset, 2011
Contours.....National Elevation Dataset, 1999
Boundaries.....Census, IBWC, IBC, USGS, 1972 - 2010



QUADRANGLE LOCATION

Edelstein	Rome	Chillicothe
Dunlap	Spring Bay	Germanman Hills
Peoria West	Peoria East	Washington

ADJOINING 7.5' QUADRANGLES



SPRING BAY, IL
2012