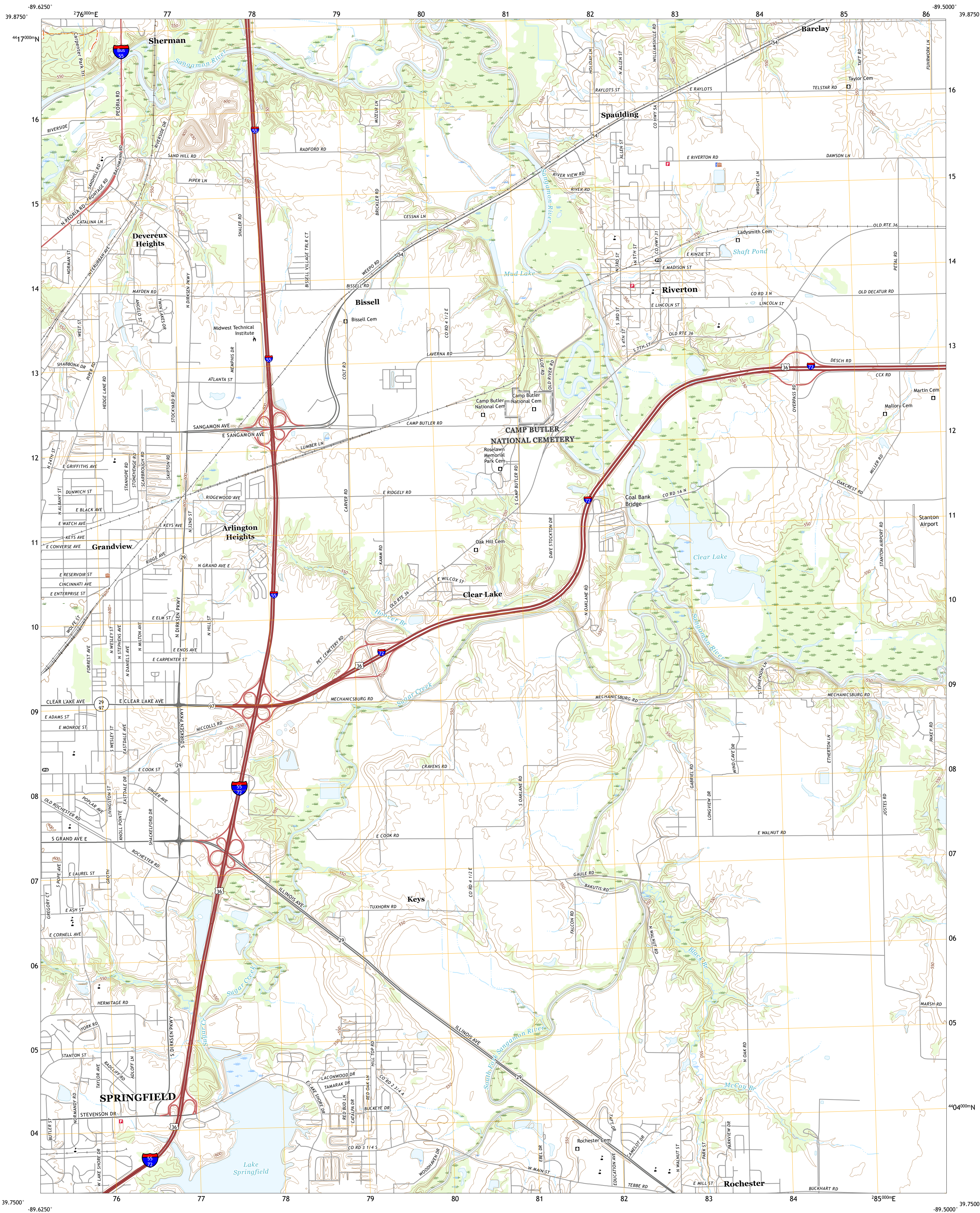




U.S. DEPARTMENT OF THE INTERIOR
U.S. GEOLOGICAL SURVEY

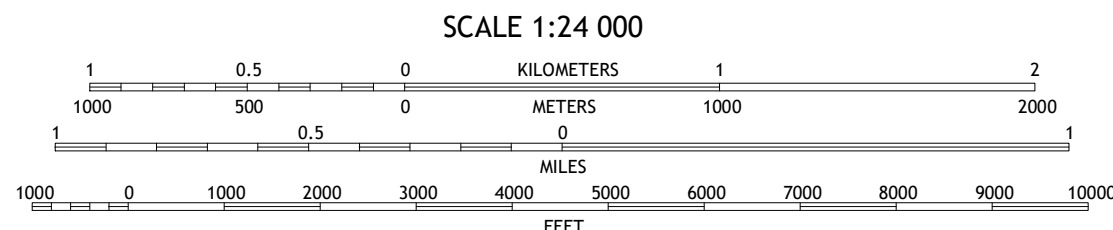
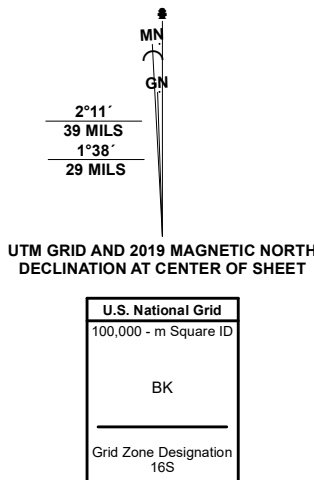


SPRINGFIELD EAST QUADRANGLE
ILLINOIS - SANGAMON COUNTY
7.5-MINUTE SERIES



Produced by the United States Geological Survey

North American Datum of 1983 (NAD83)
World Geodetic System of 1984 (WGS84). Projection and
1 000-meter grid/Universal Transverse Mercator, Zone 16S
This map is not a legal document. Boundaries may be
generalized for this map scale. Private lands within government
reservations may not be shown. Obtain permission before
entering private lands.
Imagery.....NAIP, July 2019 - July 2019
Roads.....U.S. Census Bureau, 2017
Names.....GNIS, 1980 - 2020
Hydrography.....National Hydrography Dataset, 2004 - 2018
Contours.....National Elevation Dataset, 2019
Boundaries.....Multiple sources: see metadata file 2013 - 2019
Public Land Survey System.....BLM, 2020
Wetlands.....FWS National Wetlands Inventory Not Available



1	2	3
4	5	6
7	8	9

- 1 Athens
- 2 Williamsville
- 3 Cornland
- 4 Springfield West
- 5 Mechanicsburg
- 6 Chatham
- 7 New City
- 8 Edinburg

ROAD CLASSIFICATION
Expressway
Secondary Hwy
Ramp
Interstate Route
Local Connector
Local Road
4WD
US Route
State Route

SPRINGFIELD EAST, IL

2021

