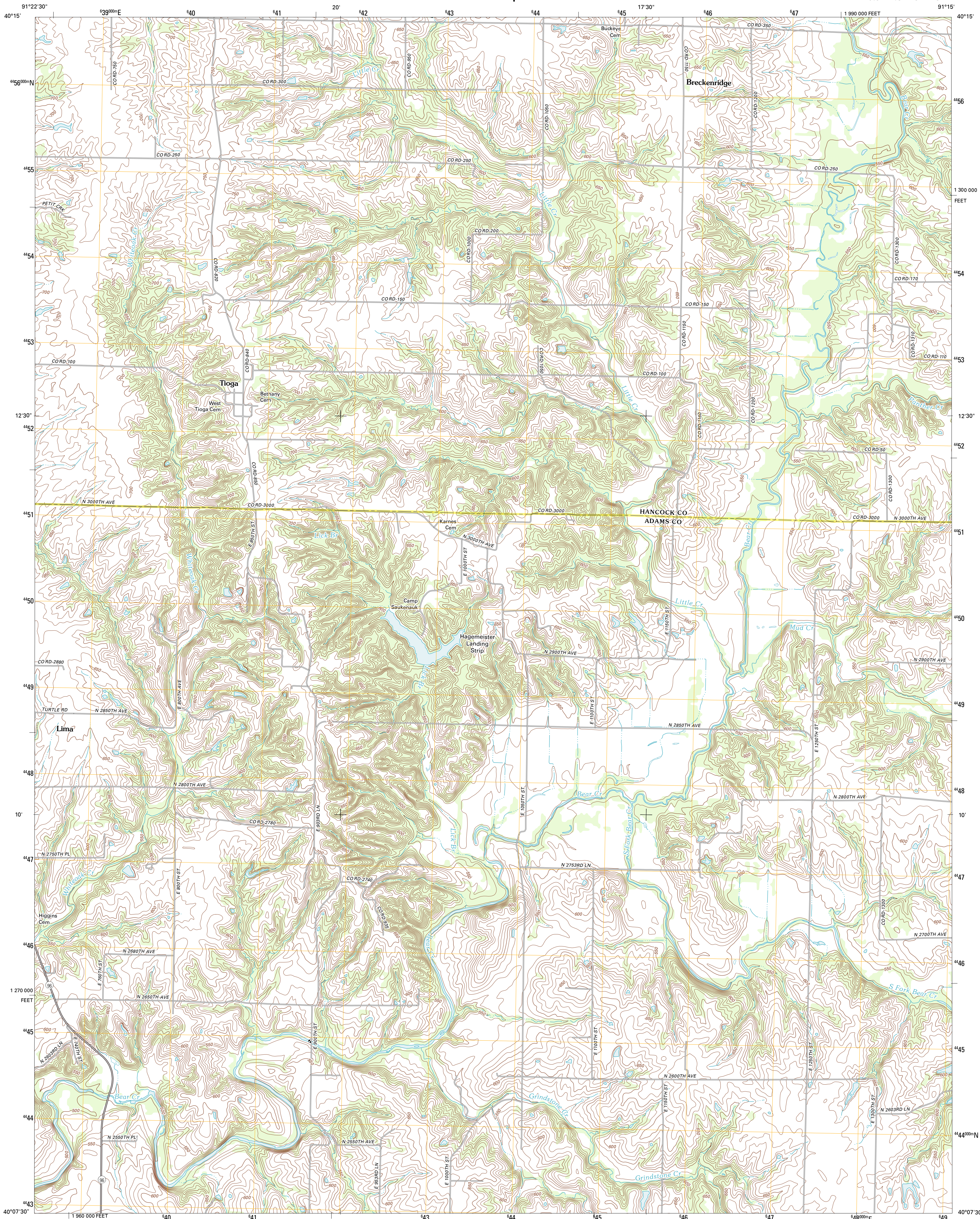




U.S. DEPARTMENT OF THE INTERIOR
U. S. GEOLOGICAL SURVEY



TIOGA QUADRANGLE
ILLINOIS
7.5-MINUTE SERIES



Produced by the United States Geological Survey
North American Datum of 1983 (NAD83)
World Geodetic System of 1984 (WGS84). Projection and
1 000-meter grid: Universal Transverse Mercator, Zone 15T
10 000-foot ticks: Illinois Coordinate System of 1983 (west
zone)

Imagery.....NAIP, August 2011
Roads.....©2006-2011 TomTom
Names.....©GNIS, 2011
Hydrography.....National Hydrography Dataset, 2011
Contours.....National Elevation Dataset, 2012
Boundaries.....Census, IBWC, IBC, USGS, 1972 - 2010

UTM GRID AND 2012 MAGNETIC NORTH
DECLINATION AT CENTER OF SHEET

U.S. National Grid
100,000-m Square ID
XE
Grid Zone Designation
15T

SCALE 1:24 000

1 000 000 FEET
1 000 000 METERS
1 000 000 KILOMETERS

CONTOUR INTERVAL 10 FEET
NORTH AMERICAN VERTICAL DATUM OF 1988

This map was produced to conform with the
National Geospatial Program US Topo Product Standard, 2011.
A metadata file associated with this product is draft version 0.6.3

QUADRANGLE LOCATION

Warsaw	Sutter	West Point
Lima	Tioga	Loraine
Long Island	Mendon	Coatsburg

ADJOINING 7.5' QUADRANGLES

ROAD CLASSIFICATION

Interstate Route
US Route
Ramp

State Route
Local Road
4WD

US Route
State Route

TIOGA, IL
2012