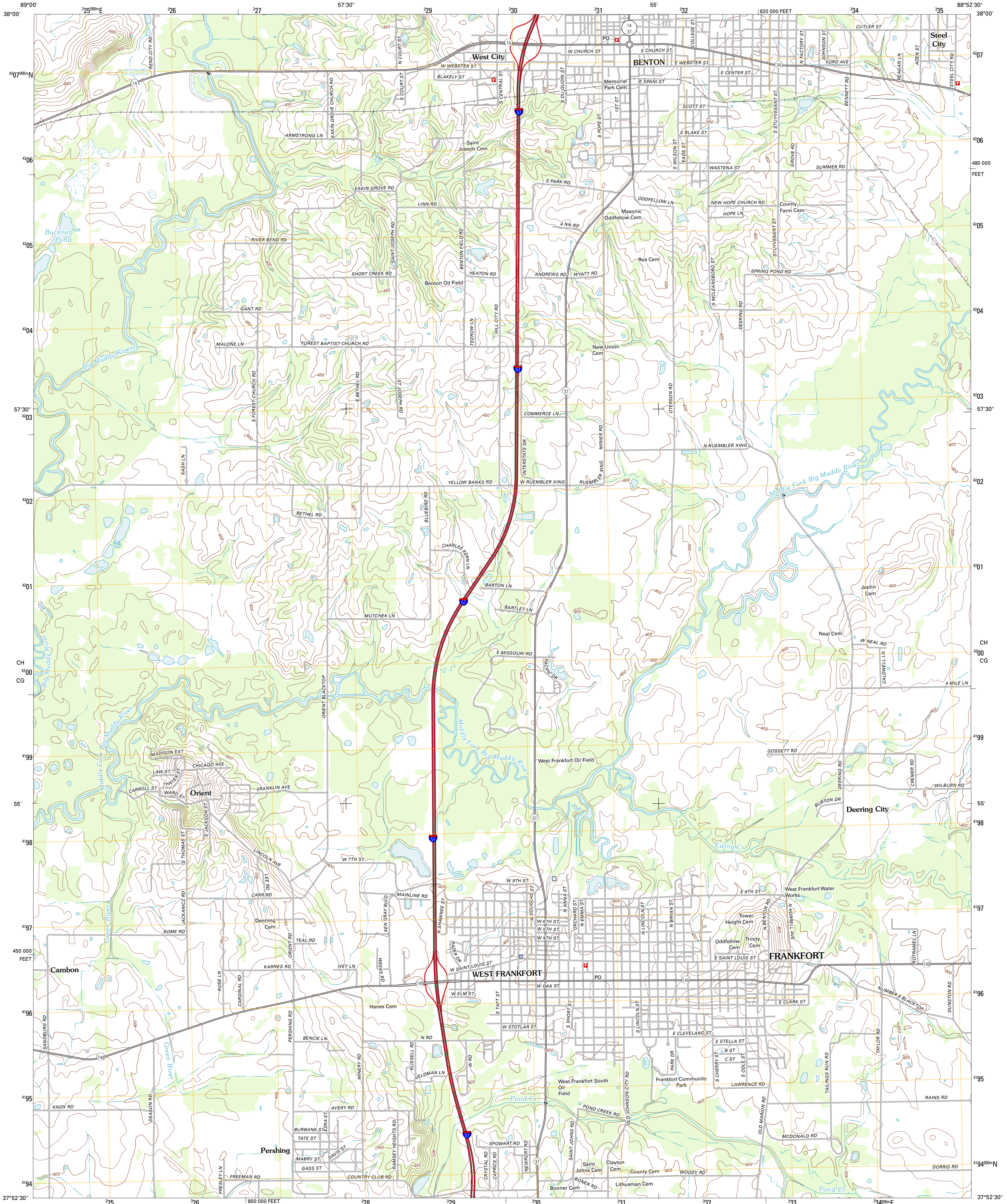




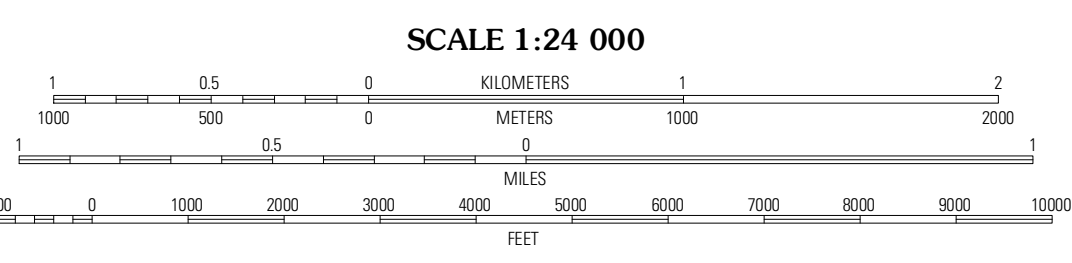
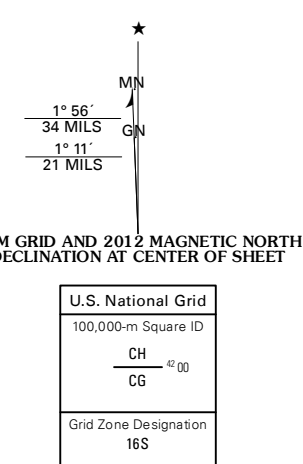
U.S. DEPARTMENT OF THE INTERIOR
U. S. GEOLOGICAL SURVEY



WEST FRANKFORT QUADRANGLE
ILLINOIS-FRANKLIN CO.
7.5-MINUTE SERIES



Produced by the United States Geological Survey
North American Datum of 1983 (NAD83)
World Geodetic System of 1984 (WGS84). Projection and
1 000-meter grid: Universal Transverse Mercator, Zone 16S
10 000-foot ticks: Illinois Coordinate System of 1983 (east zone)



CONTOUR INTERVAL 10 FEET
NORTH AMERICAN VERTICAL DATUM OF 1988
This map was produced to conform with the
National Geospatial Program US Topo Product Standard, 2011.
A metadata file associated with this product is draft version 0.6.3

ROAD CLASSIFICATION

- Interstate Route (thick red line)
- US Route (red line)
- Ramp (red line with blue arrow)
- State Route (thin red line)
- Local Road (black line)
- 4WD (dashed black line)

QUADRANGLE LOCATION

Sesser	Rend Lake Dam	Ewing
Christopher	West Frankfort	Thompsonville
Herrin	Johnston City	Pittsburg

ADJOINING 7.5 QUADRANGLES

WEST FRANKFORT, IL
2012