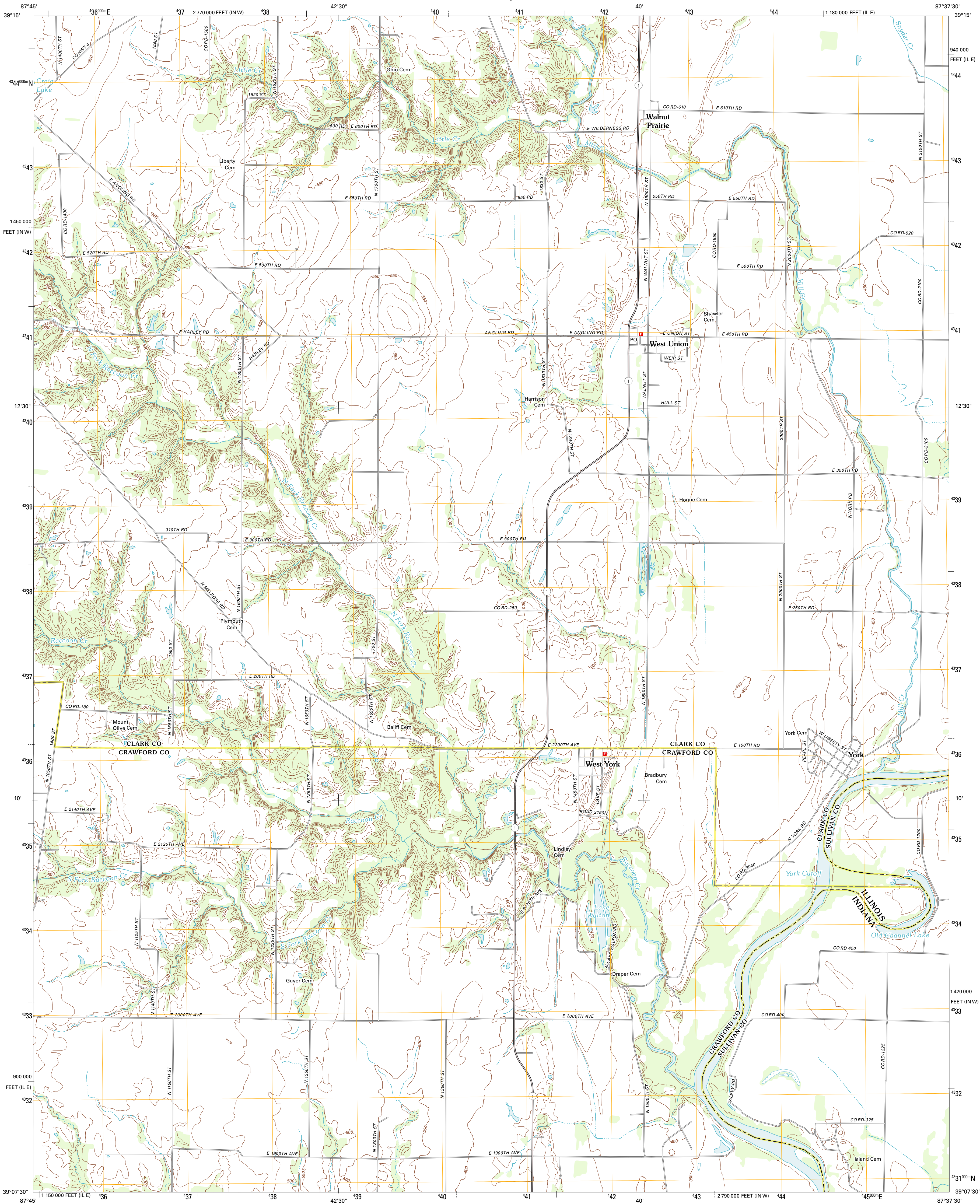




U.S. DEPARTMENT OF THE INTERIOR  
U. S. GEOLOGICAL SURVEY



WEST UNION QUADRANGLE  
ILLINOIS-INDIANA  
7.5-MINUTE SERIES

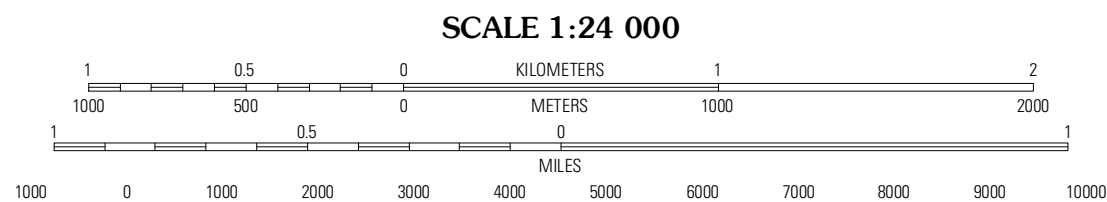


Produced by the United States Geological Survey  
North American Datum of 1983 (NAD83)  
World Geodetic System of 1984 (WGS84). Projection and  
1 000-meter grid: Universal Transverse Mercator, Zone 16S  
10 000-foot ticks: Illinois Coordinate System of 1983 (east  
zone), Indiana Coordinate System of 1983 (west zone)

Imagery:.....NAIP, August 2011  
Roads:.....©2006-2011 TomTom  
Names:.....GNIS, 2011  
Hydrography:.....National Hydrography Dataset, 2011  
Contours:.....National Elevation Dataset, 2012  
Boundaries:.....Census, IBWC, IBC, USGS, 1972 - 2010

UTM GRID AND 2012 MAGNETIC NORTH  
DECLINATION AT CENTER OF SHEET

U.S. National Grid
100,000-m Square ID
DJ
Grid Zone Designation
16S



CONTOUR INTERVAL 10 FEET  
NORTH AMERICAN VERTICAL DATUM OF 1988

This map was produced to conform with the  
National Geospatial Program US Topo Product Standard, 2011.  
A metadata file associated with this product is draft version 0.6.3



Clark Center	Snyder	Hutton
Annapolis	West Union	Fairbanks
Porterville	Huttsville	Merom

ADJOINING 7.5' QUADRANGLES

ROAD CLASSIFICATION  
Interstate Route  
US Route  
Ramp  
State Route  
Local Road  
4WD  
US Route  
State Route

WEST UNION, IL-IN  
2012