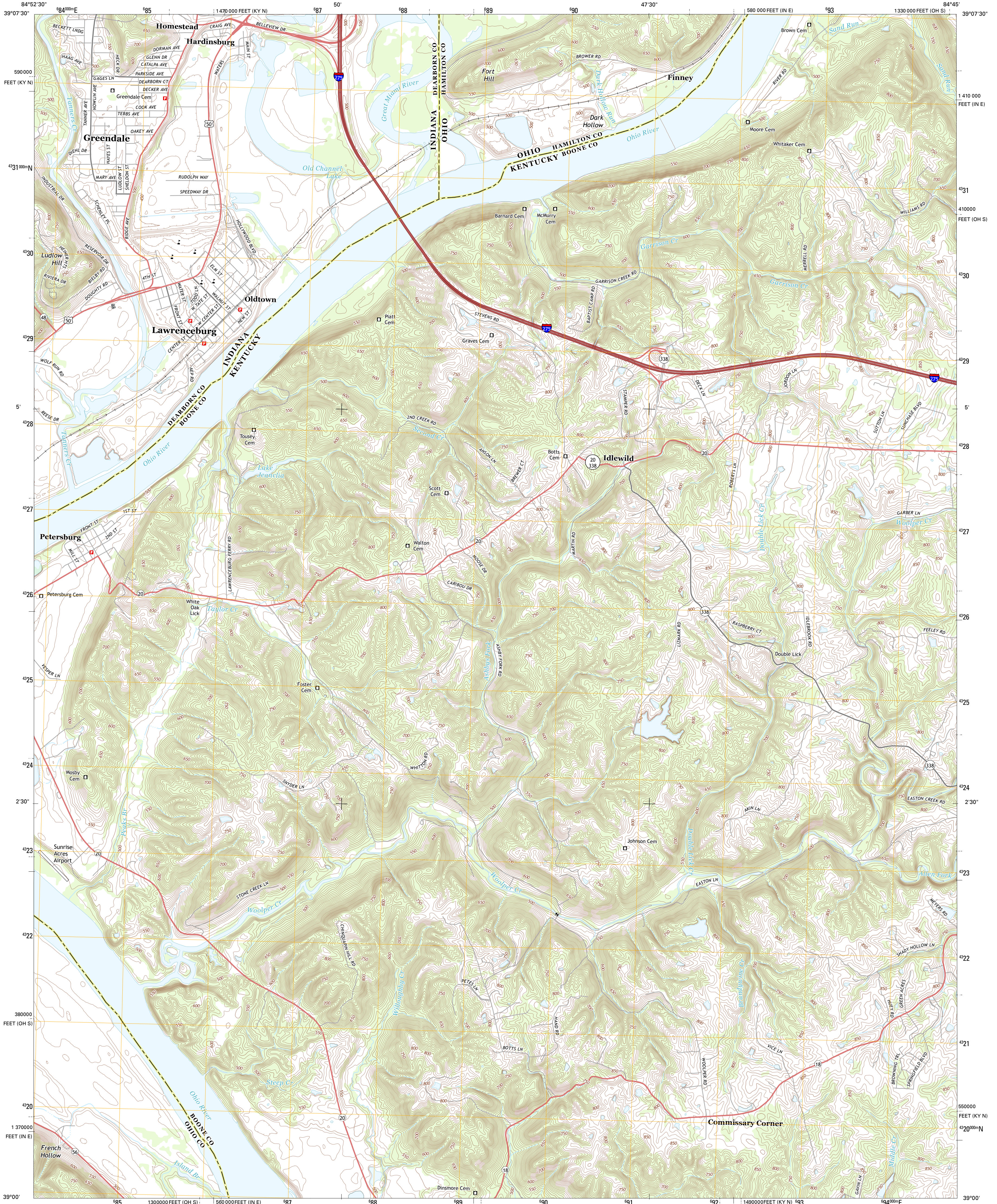




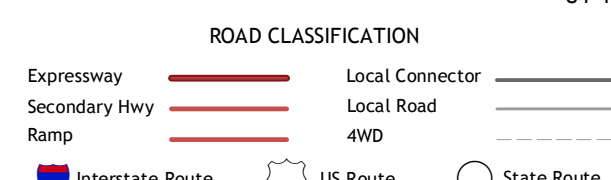
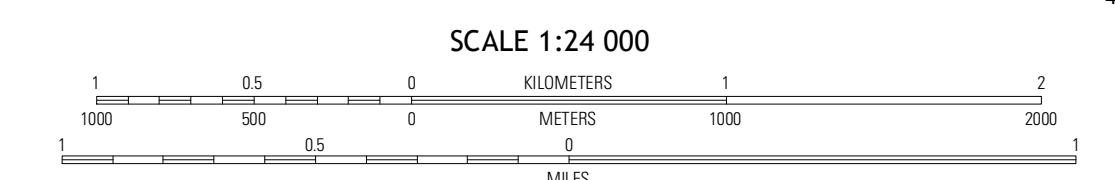
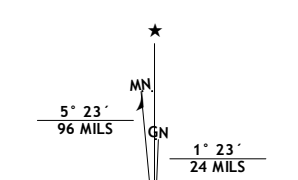
U.S. DEPARTMENT OF THE INTERIOR  
U. S. GEOLOGICAL SURVEY



LAWRENCEBURG QUADRANGLE  
INDIANA-KENTUCKY-OHIO  
7.5-MINUTE SERIES



Produced by the United States Geological Survey  
North American Datum of 1983 (NAD83)  
World Geodetic System of 1984 (WGS84) Projection and  
1 000-meter grid: Universal Transverse Mercator, Zone 16S  
10 000-foot ticks: Kentucky Coordinate System of 1983 (north  
zone), Indiana Coordinate System of 1983 (east zone), Ohio  
Coordinate System of 1983 (south zone)



Imagery.....NAIP, June 2012  
Roads.....©2006-2012 TomTom  
Names.....©2012  
Hydrography.....National Hydrography Dataset, 2012  
Contours.....National Elevation Dataset, 2004  
Boundaries.....Census, IBWC, IBC, USGS, 1972-2012

CONTOUR INTERVAL 10 FEET  
NORTH AMERICAN VERTICAL DATUM OF 1988

This map was produced to conform with the  
National Geospatial Program US Topo Product Standard, 2011.  
A metadata file associated with this product is draft version 0.6.11

Galliford	Hooven	Addyston
Aurora	Lawrenceburg	Burlington
Aberdeen	Rising Sun	Union

ADJOINING 7.5 QUADRANGLES

LAWRENCEBURG, IN-KY-OH  
2013