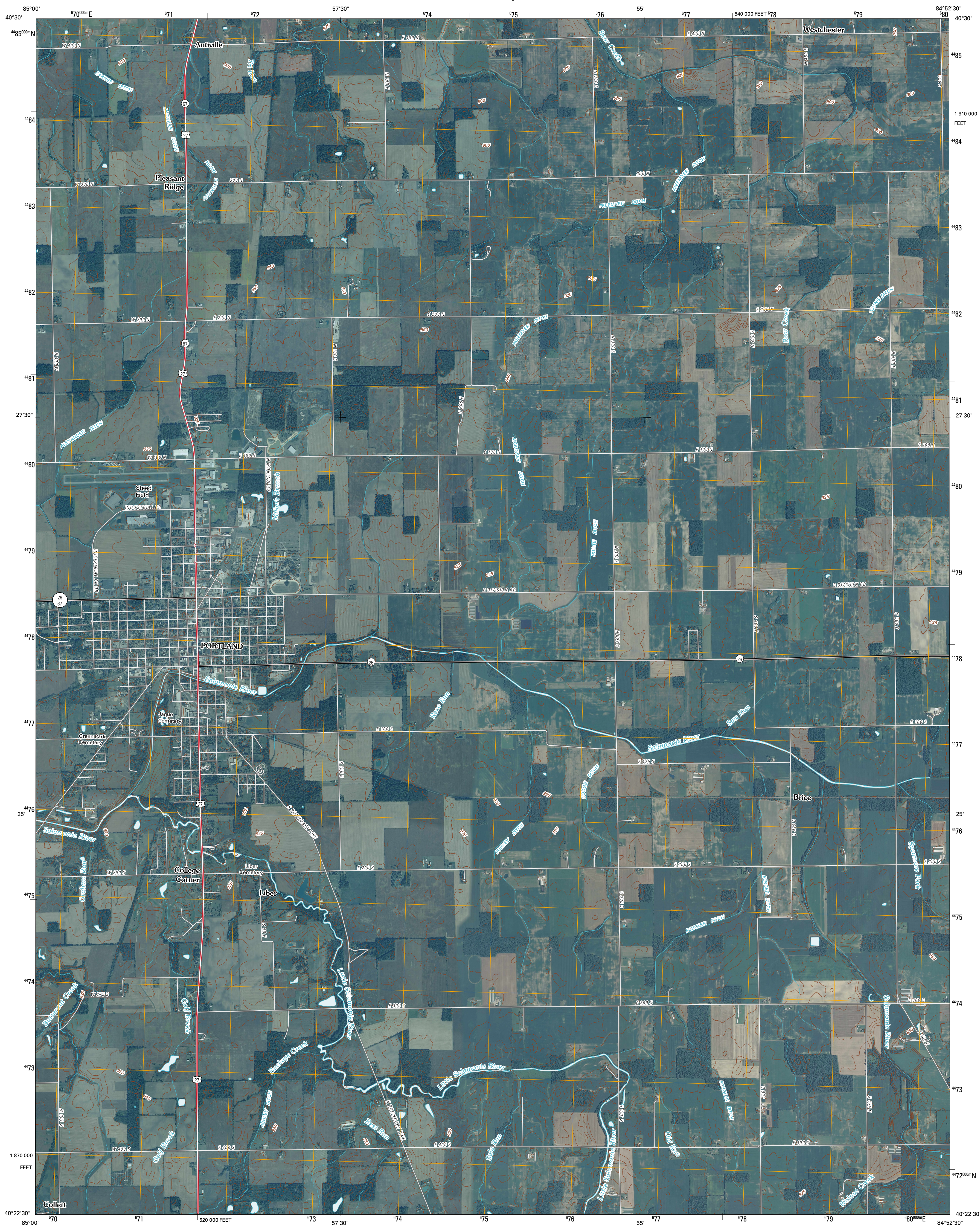




U.S. DEPARTMENT OF THE INTERIOR  
U. S. GEOLOGICAL SURVEY

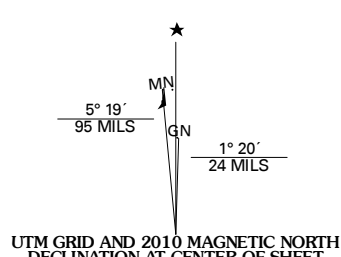


PORTLAND QUADRANGLE  
INDIANA  
7.5-MINUTE SERIES

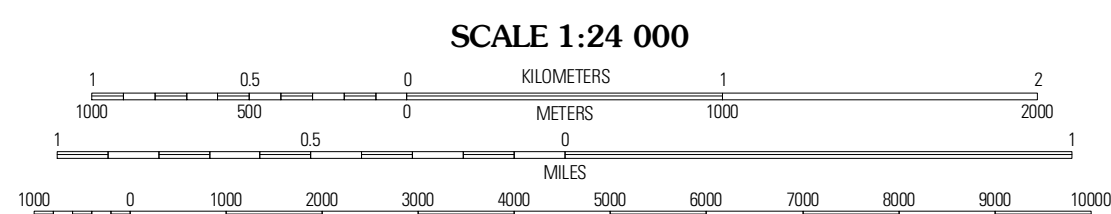


Produced by the United States Geological Survey  
North American Datum of 1983 (NAD83)  
World Geodetic System of 1984 (WGS84). Projection and  
1 000-meter grid: Universal Transverse Mercator, Zone 16T  
10 000-foot ticks: Indiana Coordinate System of 1983  
(east zone)

Imagery.....NAP, July 2008 - August 2008  
Roads.....US Census Bureau TIGER data  
with limited USGS updates, 2008  
Names.....GNIS, 2008  
Hydrography.....National Hydrography Dataset, 2008  
Contours.....National Elevation Dataset, 2007



U.S. National Grid 100,000m Square ID
FK
Grid Zone Designation 16T



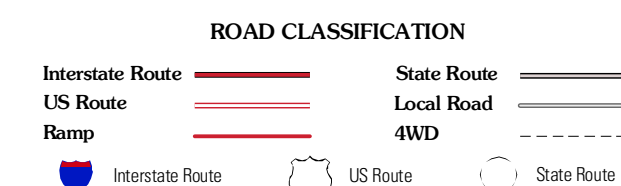
CONTOUR INTERVAL 5 FEET

This map was produced to conform with version 0.5.10 of the  
draft USGS Standards for 7.5-Minute Quadrangle Maps.  
A metadata file associated with this product is also draft version 0.5.10



INDIANA		
Domestic	Geneva	New Cordell
Blaine	Portland	Fort Recovery
Ridgeville	Deerfield	Cosmos

ADJOINING 7.5 QUADRANGLES



PORTLAND, IN  
2010