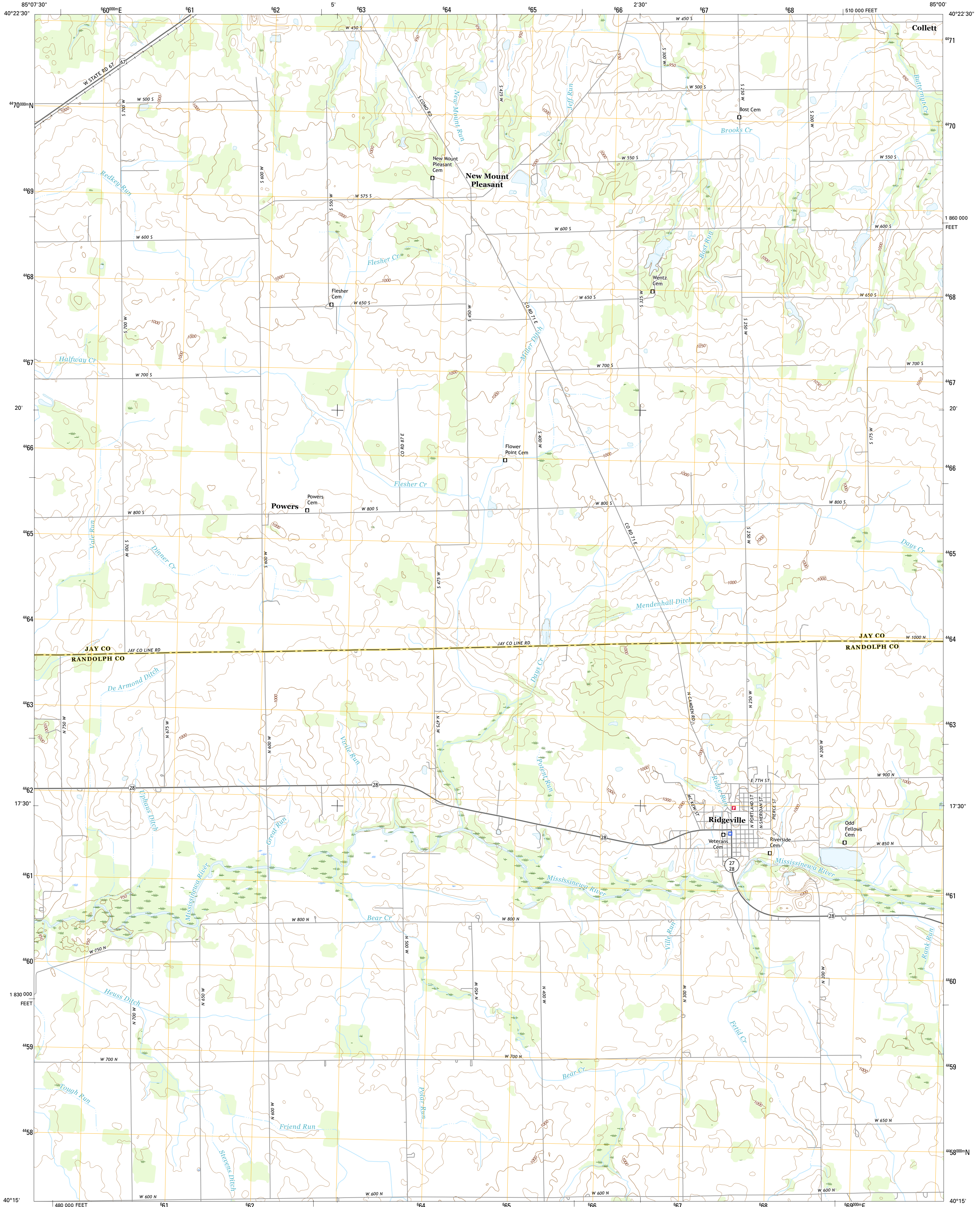




U.S. DEPARTMENT OF THE INTERIOR
U.S. GEOLOGICAL SURVEY



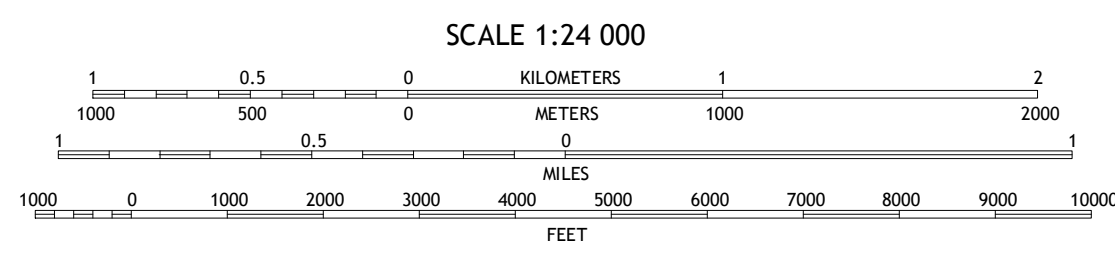
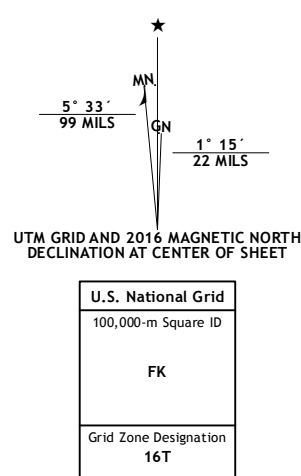
RIDGEVILLE QUADRANGLE
INDIANA
7.5-MINUTE SERIES



Produced by the United States Geological Survey
North American Datum of 1983 (NAD83)
World Geodetic System of 1984 (WGS84). Projection and
1 000-meter grid: Universal Transverse Mercator, Zone 16T
10 000-foot ticks: Indiana Coordinate System of 1983 (east zone)

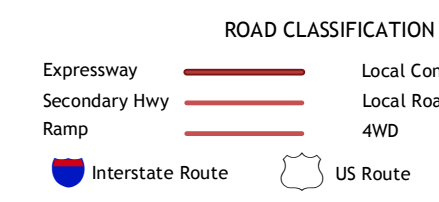
This map is not a legal document. Boundaries may be
generalized for this map scale. Private lands within government
reservations may not be shown. Obtain permission before
entering private lands.

Imagery.....NAIP, December 2014
Roads.....U.S. Census Bureau, 2015 - 2016
Names.....U.S. Census Bureau, 2015 - 2016
Hydrography.....National Hydrography Dataset, 2014
Contours.....National Elevation Dataset, 2016
Boundaries.....Multiple sources; see metadata file 1972 - 2016
Public Land Survey System.....BLM, 2015
Wetlands.....FWS National Wetlands Inventory 1977 - 2014



CONTOUR INTERVAL 10 FEET
NORTH AMERICAN VERTICAL DATUM OF 1988

This map was produced to conform with the
National Geospatial Program US Topo Product Standard, 2011.
A metadata file associated with this product is draft version 0.6.19



1	2	3
4	5	6
7	8	

ADJOINING QUADRANGLES

1 Pennville
2 Blaine
3 Portland
4 Rebecky
5 Deerfield
6 Farmland
7 Maxville
8 Winchester

RIDGEVILLE, IN
2016

