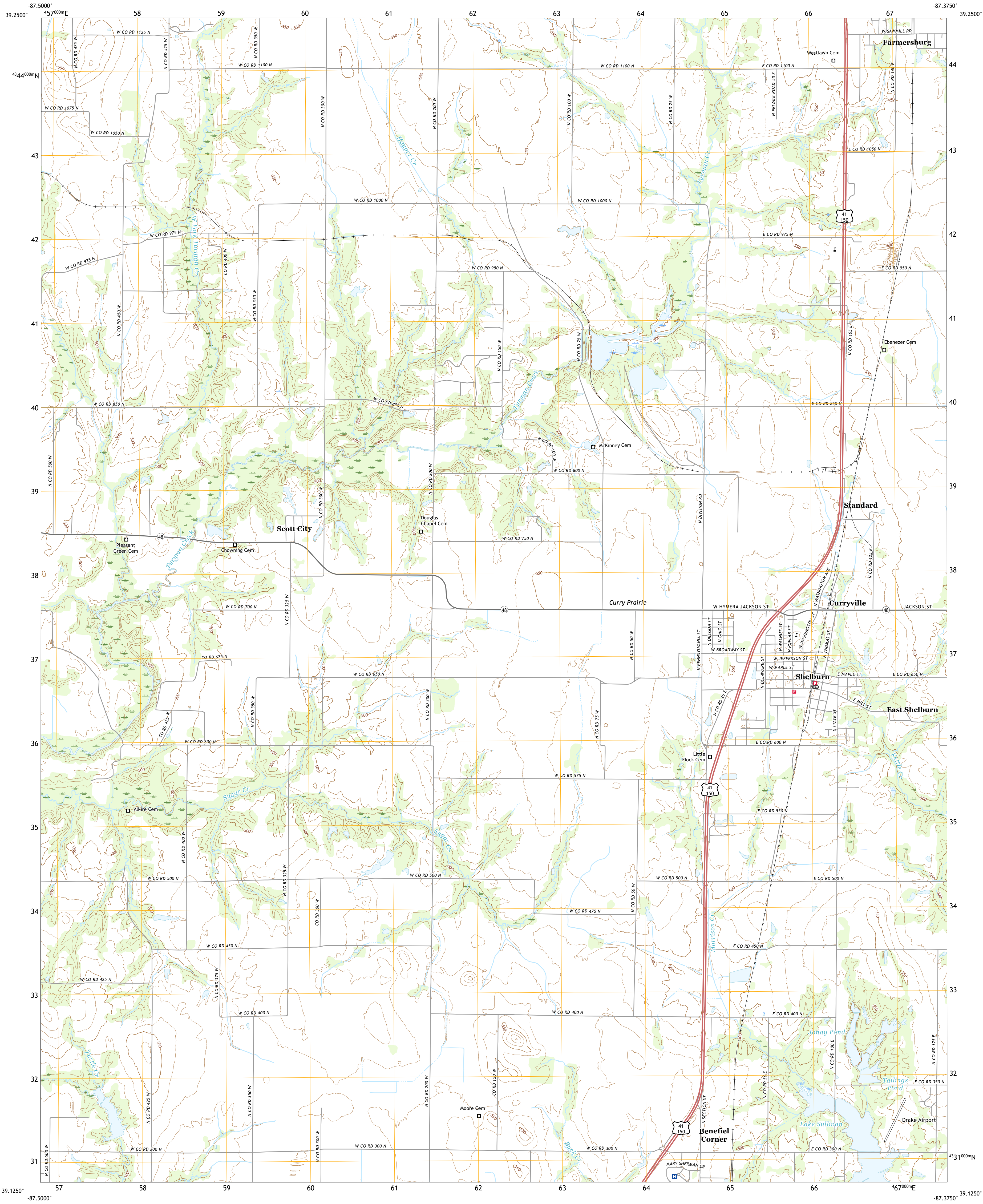




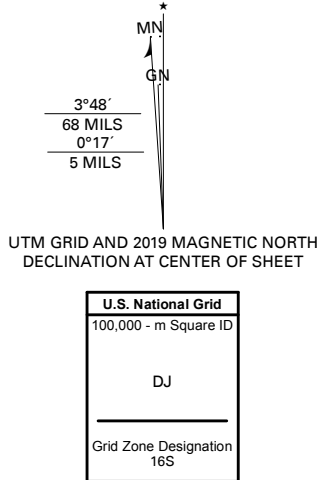
U.S. DEPARTMENT OF THE INTERIOR
U.S. GEOLOGICAL SURVEY



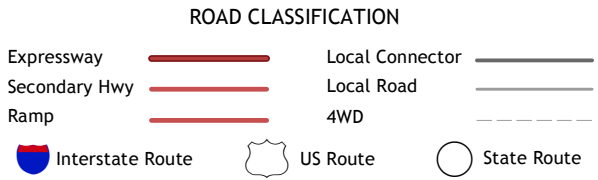
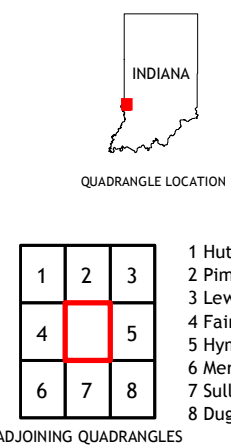
SHELBURN QUADRANGLE
INDIANA - SULLIVAN COUNTY
7.5-MINUTE SERIES



Produced by the United States Geological Survey
North American Datum of 1983 (NAD83)
World Geodetic System of 1984 (WGS84). Projection and
1 000-meter grid/Universal Transverse Mercator, Zone 16S
This map is not a legal document. Boundaries may be
generalized for this map scale. Private lands within government
reservations may not be shown. Obtain permission before
entering private lands.
Imagery.....NAIP, June 2016 - October 2016
Roads.....U.S. Census Bureau, 2016
Names.....GNIS, 1979 - 2019
Hydrography.....National Hydrography Dataset, 2007 - 2019
Contours.....National Elevation Dataset, 2013 - 2016
Boundaries.....Multiple sources: see metadata file, 2017 - 2018
Public Land Survey System.....BLM, 2018
Wetlands.....FWS National Wetlands Inventory 1980



CONTOUR INTERVAL 10 FEET
NORTH AMERICAN VERTICAL DATUM OF 1988
This map was produced to conform with the
National Geospatial Program US Topo Product Standard, 2011.
A metadata file associated with this product is draft version 0.6.18



SHELBURN, IN
2019

