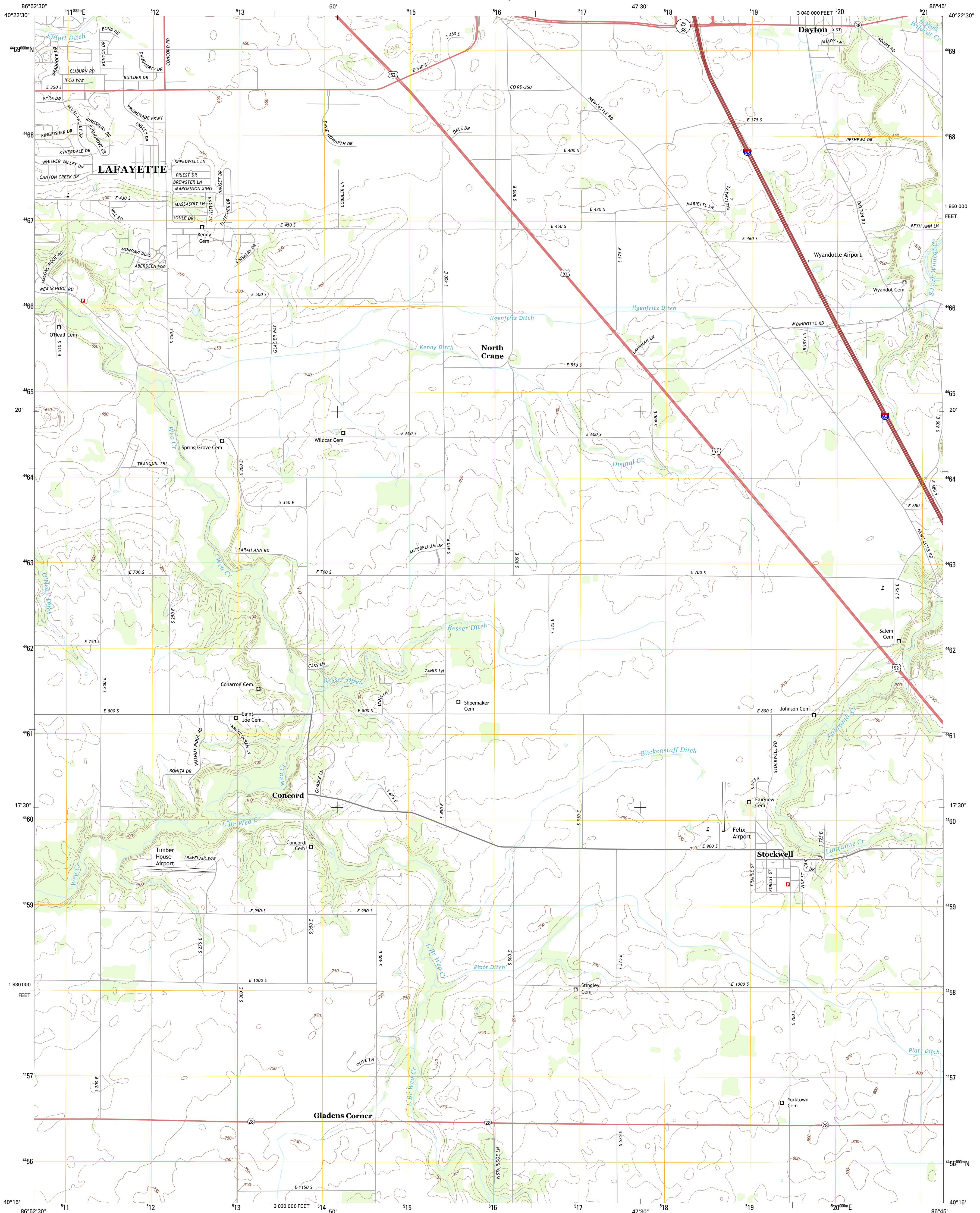




U.S. DEPARTMENT OF THE INTERIOR
U. S. GEOLOGICAL SURVEY

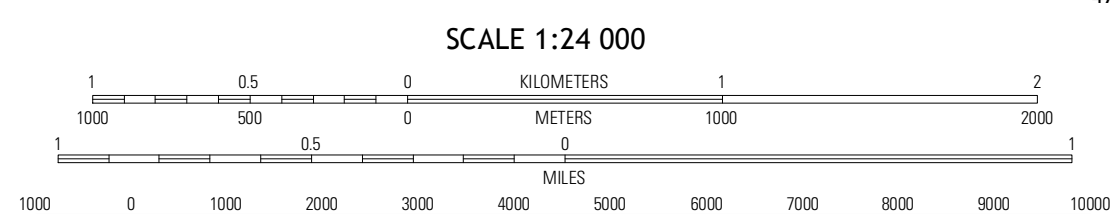
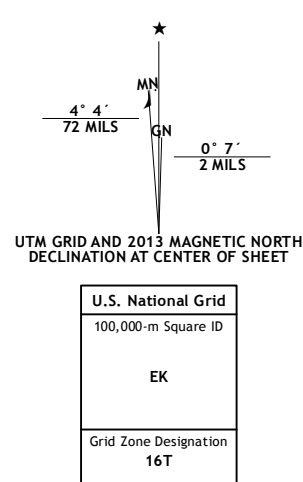


STOCKWELL QUADRANGLE
INDIANA-TIPPECANOE CO.
7.5-MINUTE SERIES



Produced by the United States Geological Survey
North American Datum of 1983 (NAD83)
World Geodetic System of 1984 (WGS84) Projection and
1 000-meter grid: Universal Transverse Mercator, Zone 16T
10 000-foot ticks: Indiana Coordinate System of 1983 (west zone)

Imagery.....NAIP, June 2012
Roads.....©2006-2012 TomTom
Names.....©2013 CNES
Hydrography.....National Hydrography Dataset, 2012
Contours.....National Elevation Dataset, 2007
Boundaries.....Census, IBW, ISC, USCS, 1972-2012



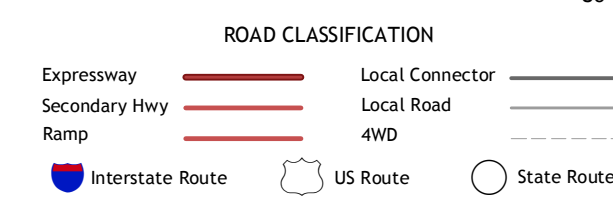
CONTOUR INTERVAL 10 FEET
NORTH AMERICAN VERTICAL DATUM OF 1988
This map was produced to conform with the
National Geospatial Program US Topo Product Standard, 2011.
A metadata file associated with this product is draft version 0.6.11



QUADRANGLE LOCATION

Lafayette West	Lafayette East	Pymont
Rumney	Stockwell	Milberry
Linden	Kirkpatrick	Colfax

ADJOINING 7.5 QUADRANGLES



STOCKWELL, IN
2013