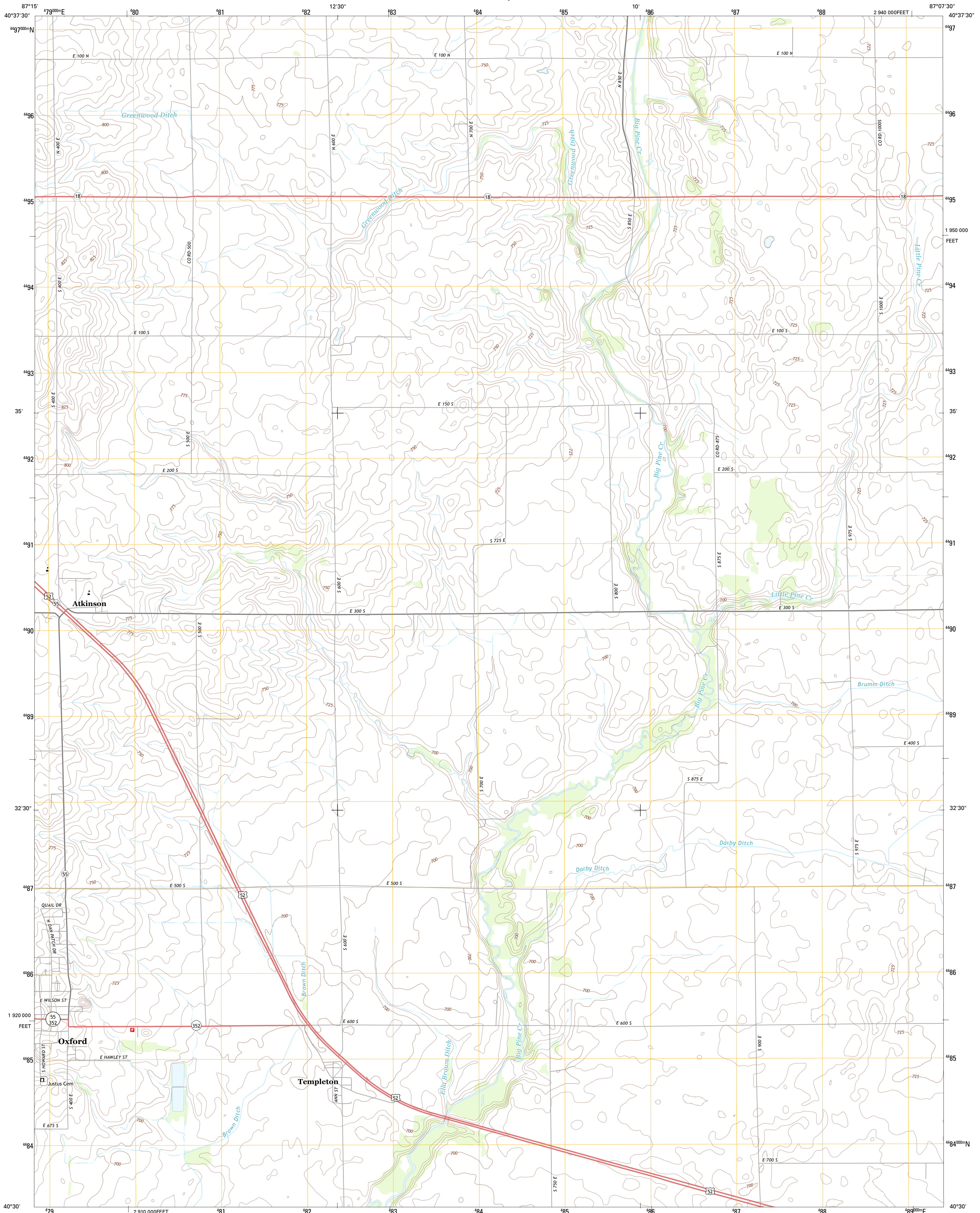




U.S. DEPARTMENT OF THE INTERIOR  
U. S. GEOLOGICAL SURVEY

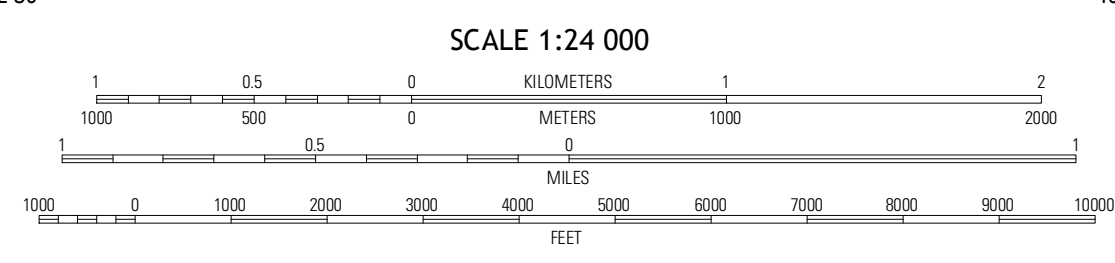
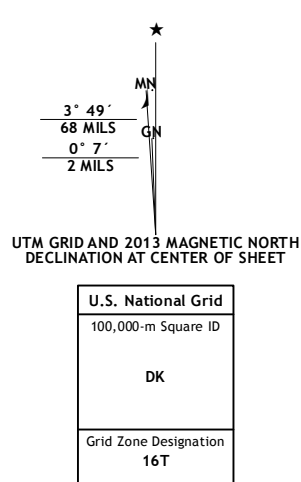


TEMPLETON QUADRANGLE  
INDIANA-BENTON CO.  
7.5-MINUTE SERIES



Produced by the United States Geological Survey  
North American Datum of 1983 (NAD83)  
World Geodetic System of 1984 (WGS84) Projection and  
1 000-meter grid; Universal Transverse Mercator, Zone 16T  
10 000-foot ticks; Indiana Coordinate System of 1983 (west zone)

Imagery.....NAIP, June 2012  
Roads.....©2006-2012, TomTom  
Names.....©2012, TomTom  
Hydrography.....National Hydrography Dataset, 2012  
Contours.....National Elevation Dataset, 2007  
Boundaries.....Census, IBWC, IBC, USGS, 1972 - 2012

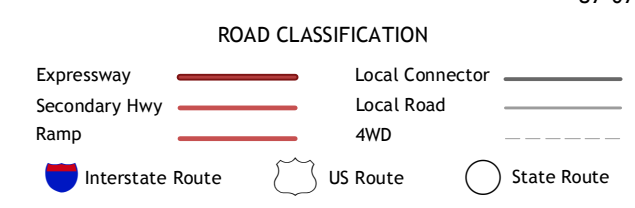


SCALE 1:24 000  
CONTOUR INTERVAL 5 FEET  
NORTH AMERICAN VERTICAL DATUM OF 1988  
This map was produced to conform with the  
National Geospatial Program US Topo Product Standard, 2011.  
A metadata file associated with this product is draft version 0.6.11



QUADRANGLE LOCATION

|              |              |              |
|--------------|--------------|--------------|
| Wadena       | Mount Gilboa | Templeton NE |
| Fowler       | Templeton    | Round Grove  |
| Pine Village | Chatterton   | Otterbein    |



TEMPLETON, IN  
2013